


LISTEN.
THINK.
SOLVE.®

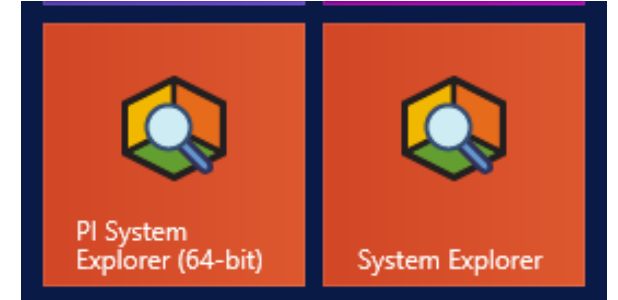
FactoryTalk® Historian Site Edition

What's New in Version 6.0

July 2018

Updated PI Server Components

- Incorporates the following components
 - Data Archive PI 2017 R2 Server
 - Asset Framework 2017 R2 Server
 - Asset Framework 2017 R2 Client Install
 - PI Analysis Server 2017 R2
 -  ▪ PI Notifications 2017 R2



FactoryTalk® Historian SE

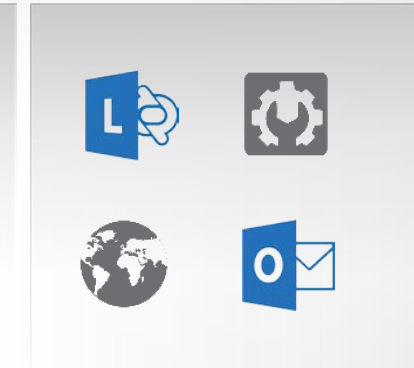
INFRASTRUCTURE

FactoryTalk® VantagePoint®
FactoryTalk® View SE
FactoryTalk® ViewPoint

VISUALIZATION SUITE

DataView
FactoryTalk® Analytics
DataFlowML
FactoryTalk® Analytics
Edge
FactoryTalk® Analytics

ANALYTICS PLATFORM



HISTORIAN SYSTEM ACCESS



FACTORYTALK® HISTORIAN SE SERVER

Notifications

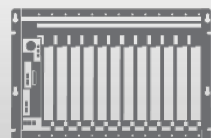
Event Frames

Analytics

Asset Framework

Data Archive

HISTORIAN INTERFACES – OPTIMIZES DATA STORAGE



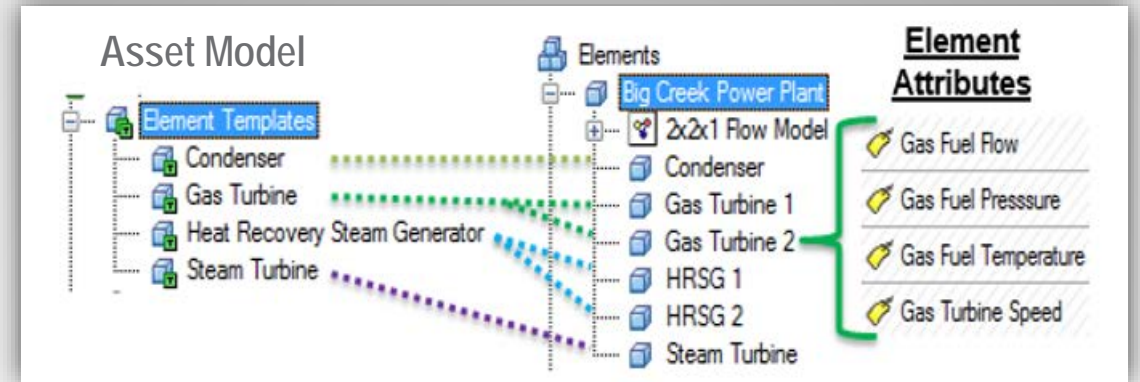
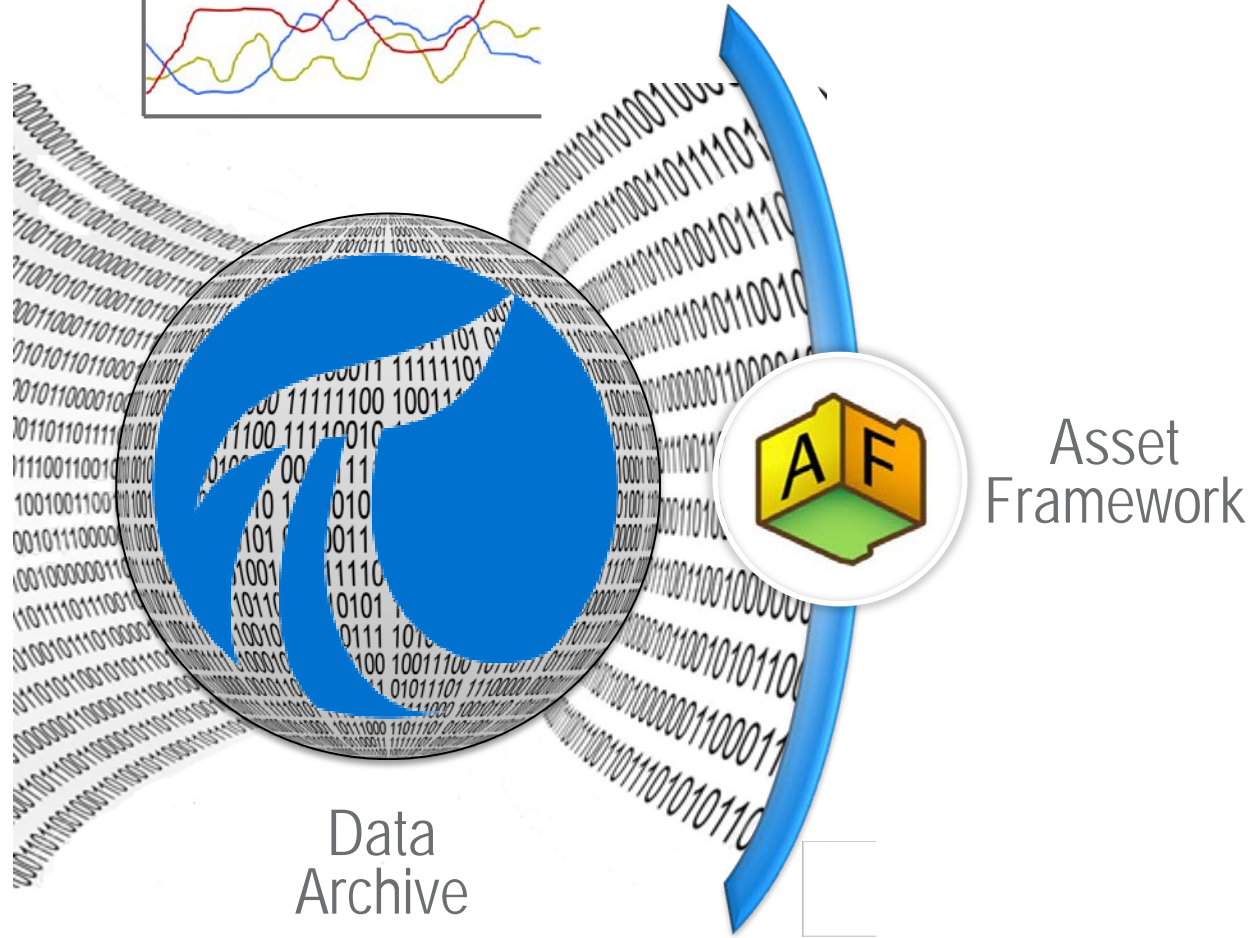
FactoryTalk® Historian ME



Rockwell Automation

Providing Context to Time Series Data

Integrated to deliver fast, seamless decision making information

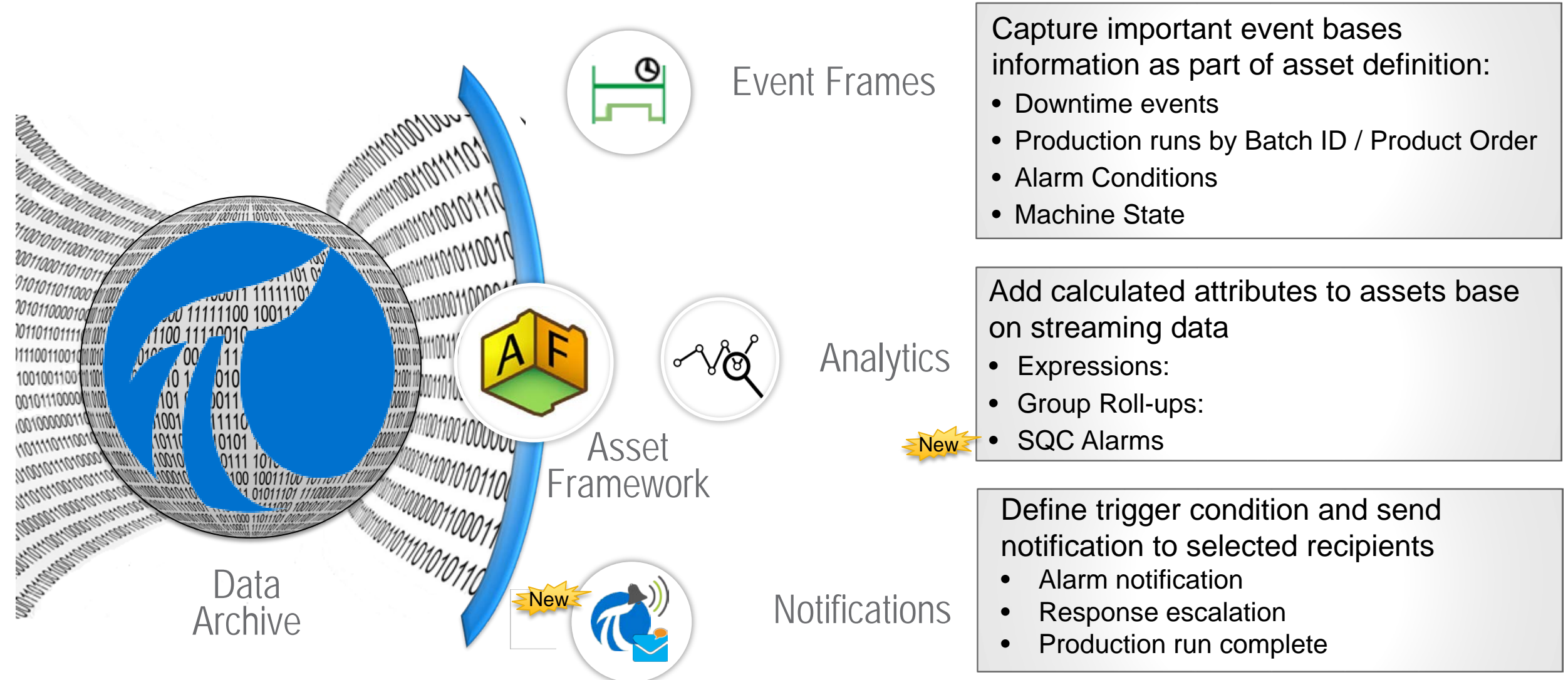


Associate data to physical assets

- Normalize reporting by having consistent templates across equipment, lines, sites and the enterprise
- Process variables become attributes of the asset
- Enhance asset attributes to unlock full potential
 - Derived calculations based on other process variable
 - Analytics (SUM, AVG, MAX, MIN, UCL, LCL, etc.)
 - Static Properties (GPS coordinates, Specifications, etc.)
 - External data references (SQL Database values)

Industry Leading Data Infrastructure

Letting your data provide the insights




Enhancement

- Complete System-Wide Transport Security is now supported
 - Transport security uses Windows SSPI for encryption to provide confidentiality and signing of messages for integrity. Windows based transport security uses symmetric key encryption and hash based message authentication codes
 - IPsec is now supported between PI Server and PI Clients/Interfaces
- AF Audit Trail is now available for SQL 2016 Standard 2016 SP1
 - Previously only supported SQL Server Enterprise and SQL Server Developer editions

Connecting to Data Sources




Both Rockwell Automation® and third-party

- FactoryTalk® Live Data
 - Optimized for use with Rockwell Automation® devices
- 9301-OPCSRVE - KepWare KEPServerEX 
 - +80 third-party drivers
 - See [Answer ID 542941](#) for details
- Published List of third-party Historian Interfaces
 - 9518-OPCHDA Historian Interface for OPC HDA
 - 9518-HINRELDB Historian Interface for Database connectivity
 - 9518-HINUNIFILE Historian Interface Universal File Loader



A complete, plant-wide Historian solution with connectivity to both Rockwell Automation® and third-party devices at the same time

Platform Support

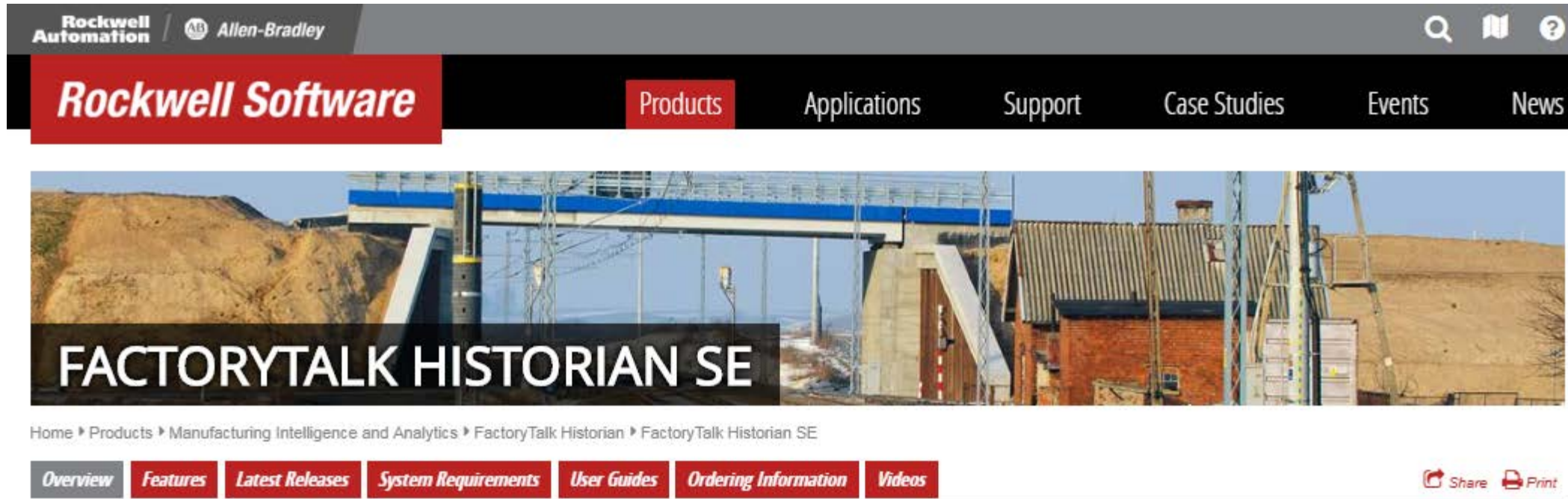
- Server OS (Server and Interfaces)
 - Windows Server 2016 
 - Windows Server 2012 R2
 - Windows Server 2008 R2 SP1
- SQL Server
 - SQL 2016 SP1 Standard & Express 
 - SQL 2012 SP3 Standard & Express
 - SQL 2014
- Clients (Interfaces, Datalink, Process Book)
 - Windows 10
 - Windows 8.1
 - Windows 7
 - Windows Server 2016 
 - Windows Server 2012 R2
 - Windows Server 2008 R2 SP1

- FactoryTalk® Services
 - FTSP CPR 9 SR10 & SR9 SR8.1
 - FactoryTalk® Activation 4.02.00
- Microsoft Excel
 - Office 2013 (32 bit)
 - Office 2016 (32 bit)



Additional Information:

- <http://www.rockwellautomation.com/rockwellsoftware/products/factorytalk-historian-se.page>



The screenshot shows the top navigation bar of the Rockwell Automation website. The header includes the Rockwell Automation and Allen-Bradley logos, search, and help icons. The main navigation menu features 'Rockwell Software' (highlighted in red), 'Products', 'Applications', 'Support', 'Case Studies', 'Events', and 'News'. Below the navigation is a large banner image of an industrial facility with the text 'FACTORYTALK HISTORIAN SE' overlaid in white. A breadcrumb trail reads: Home > Products > Manufacturing Intelligence and Analytics > FactoryTalk Historian > FactoryTalk Historian SE. A secondary navigation bar contains links for 'Overview', 'Features', 'Latest Releases', 'System Requirements', 'User Guides', 'Ordering Information', and 'Videos'. On the right side of this bar are 'Share' and 'Print' icons.

Coming Soon!!

Historian as a Subscription Service

- FactoryTalk® Historian SE and FactoryTalk® VantagePoint® will be offered as subscription service. Included in the Subscription bundle:
 - Historian SE 500 Data Points (any data source)
 - VantagePoint EMI Server
 - VantagePoint Concurrent User License, 3 Clients
 - VantagePoint Administration User License, 1 Client
 - 8 x 5 TechSupport
- Additional subscription options:
 - Historian SE 500 Data Points
 - Historian SE 5,000 Data Points
 - Historian SE 20,000 Data Points
 - VantagePoint Concurrent User License, 1 Client
- Target Available Q1CY2019

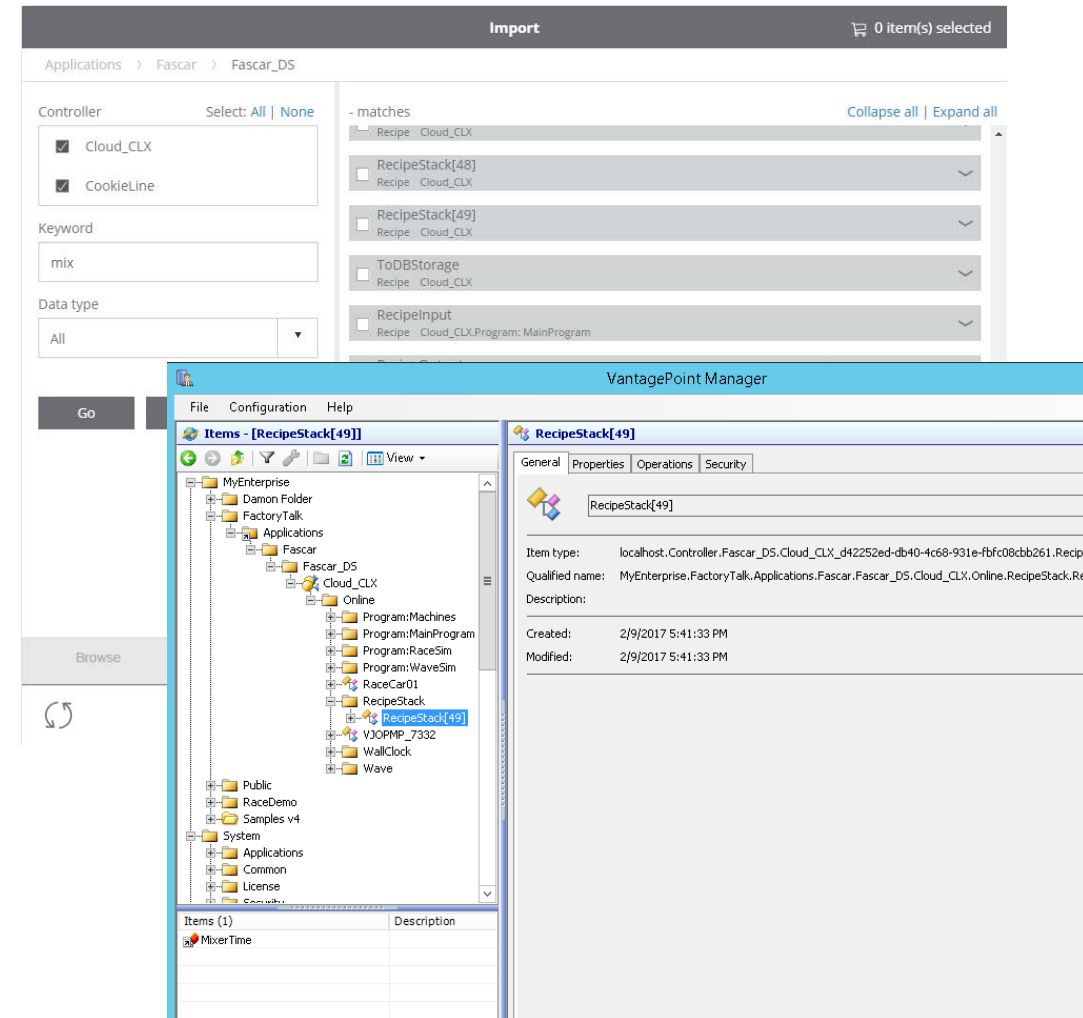
Client Access

FactoryTalk® Historian Site Edition

FactoryTalk® VantagePoint® Integration

Extending the Evaluate & Collect Experience

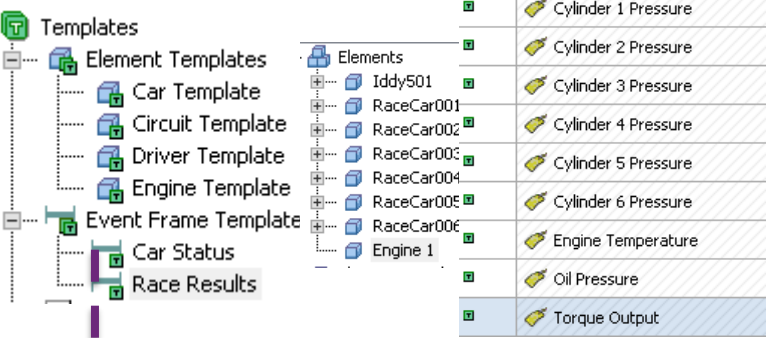
- Search
 - Search for tags across multiple controllers
 - Filter Search results based on keyword (including elements inside UDT structures)
 - Filter results based on UDT definition
- Import of UDT Structures
 - Automatically create Type Definitions in VantagePoint model for discovered UDTs
 - Only UDT elements selected are created
- Import optimization (improved performance)
 - Import only Sync tags selected in wizard



FactoryTalk® VantagePoint® Integration

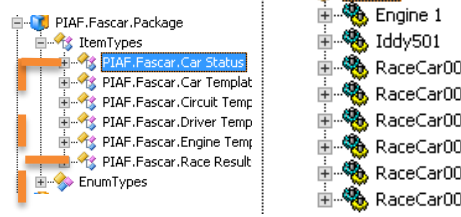
Asset Framework & Event Frames

FactoryTalk® Historian Asset Framework

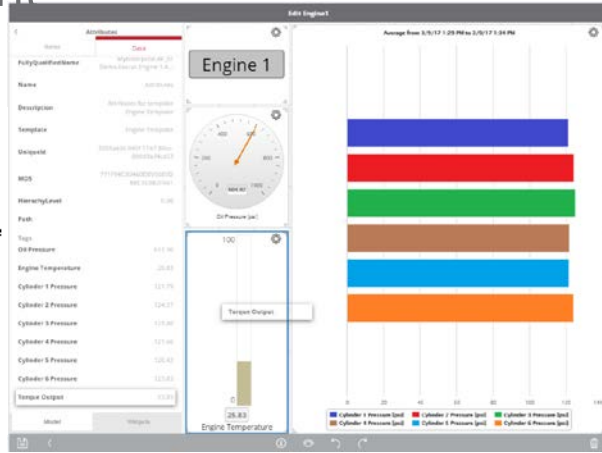
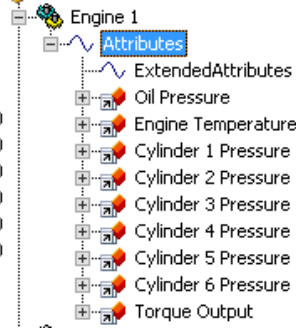


Item Name	Value	Start Time	End Time	Event Frame	Item Name
Race Res...	0:35:45.8	3/6/2017 10:18:57.9...	3/6/2017 10:5...	Race Results	Iddy501
Car Usag...	0:32:20.674	3/6/2017 10:18:57.9...	3/6/2017 10:5...	Car Status	RaceCar002
Car Usag...	0:34:33.098	3/6/2017 10:18:57.9...	3/6/2017 10:5...	Car Status	RaceCar003
Car Usag...	0:35:45.8	3/6/2017 10:18:57.9...	3/6/2017 10:5...	Car Status	RaceCar004
Car Usag...	0:32:43.738	3/6/2017 10:18:57.9...	3/6/2017 10:5...	Car Status	RaceCar006
Race Res...	0:35:46.346	3/6/2017 10:56:49.0...	3/6/2017 11:3...	Race Results	Iddy501
Car Usag...	0:32:27.226	3/6/2017 10:56:49.0...	3/6/2017 11:2...	Car Status	RaceCar002
Car Usag...	0:35:46.346	3/6/2017 10:56:49.0...	3/6/2017 11:3...	Car Status	RaceCar004
Car Usag...	0:31:30.087	3/6/2017 10:56:49.0...	3/6/2017 11:2...	Car Status	RaceCar005
Car Usag...	0:32:42.266	3/6/2017 10:56:49.0...	3/6/2017 11:2...	Car Status	RaceCar006
Race Res...	0:35:20.362	3/6/2017 11:33:28.0...	3/7/2017 12:0...	Race Results	Iddy501
Car Usag...	0:32:22.299	3/6/2017 11:33:28.0...	3/7/2017 12:0...	Car Status	RaceCar002
Car Usag...	0:34:52.289	3/6/2017 11:33:28.0...	3/7/2017 12:0...	Car Status	RaceCar003
Car Usag...	0:35:20.362	3/6/2017 11:33:28.0...	3/7/2017 12:0...	Car Status	RaceCar004
Car Usag...	0:31:28.16	3/6/2017 11:33:28.0...	3/7/2017 12:0...	Car Status	RaceCar005

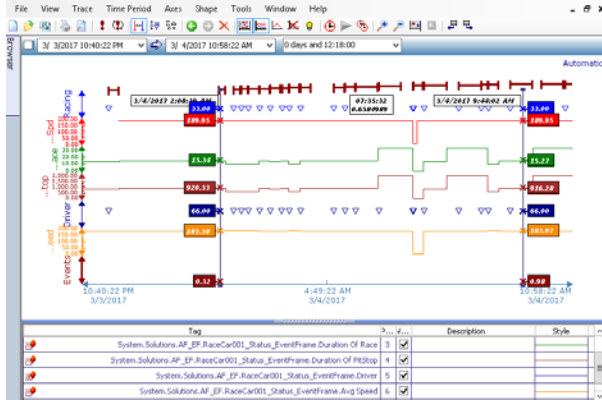
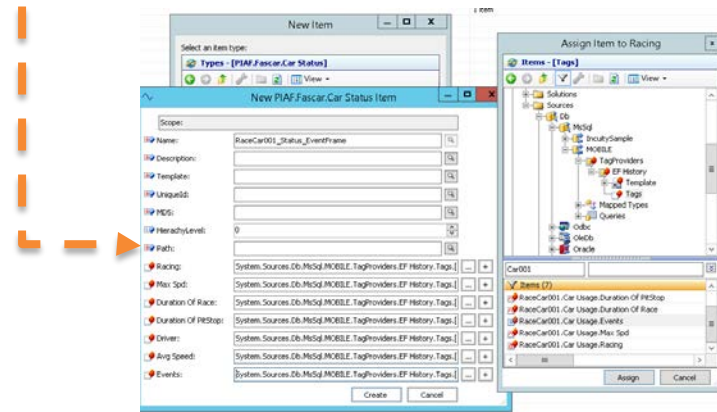
VantagePoint AF Import Tool



FactoryTalk® VantagePoint®

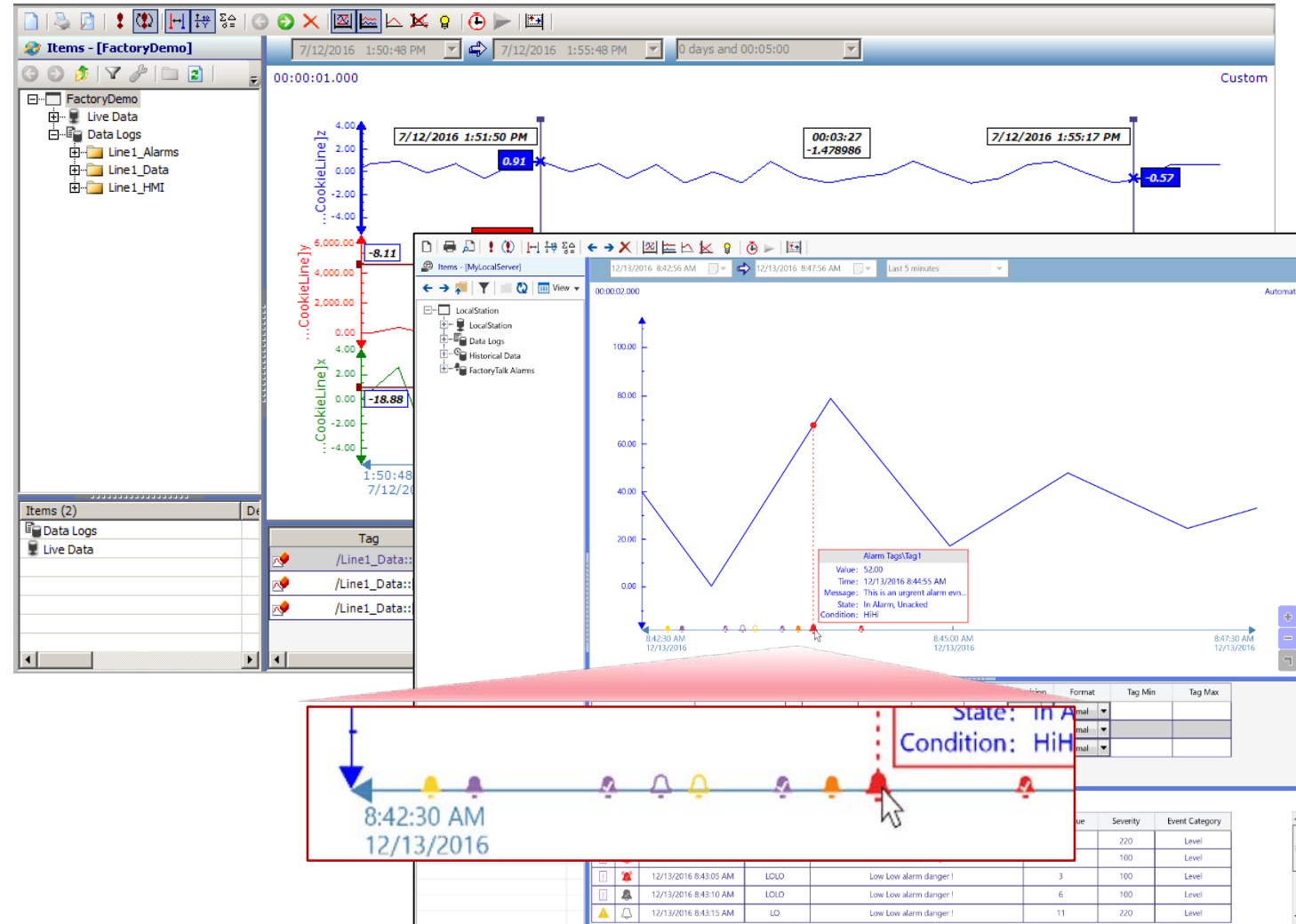


VantagePoint EF Export Tool



FactoryTalk® View SE Integration: Trend Pro

- Integrated VantagePoint trend control which provides market leading capabilities
- Does not require separate VantagePoint client licensing
- Easy runtime configuration
- Easy drag & drop ad hoc trending
- Alarms & Events Integration
- Statistical and Sampling calculations



LISTEN.
THINK.
SOLVE.®

Thank You

 Connect with us.

www.rockwellautomation.com