



Energy Management and Optimization Software Portfolio Overview

FactoryTalk® Energy Manager™
SaaS

expanding **human possibility**®



PUBLIC

FactoryTalk® Energy Manager™ SaaS



The industrial energy management and optimization solution built on an industrial DataOps platform

CAPABILITIES

- Integration of electric and all non-electric resource types
- Real-time data acquisition and monitoring
- Flexible and customizable energy model
- Pre-built dashboards to report on energy performance indicators
- Contextualize energy data with operational technology (OT) data and understand energy intensity or emissions intensity
- Charting and no-code analytics
- Alerts and notifications via email

SCALABILITY

- Single site, multi-site or enterprise

INFRASTRUCTURE

- Multi-tenant software as a service (SaaS) environment
- [Rockwell Automation](#) managed infrastructure

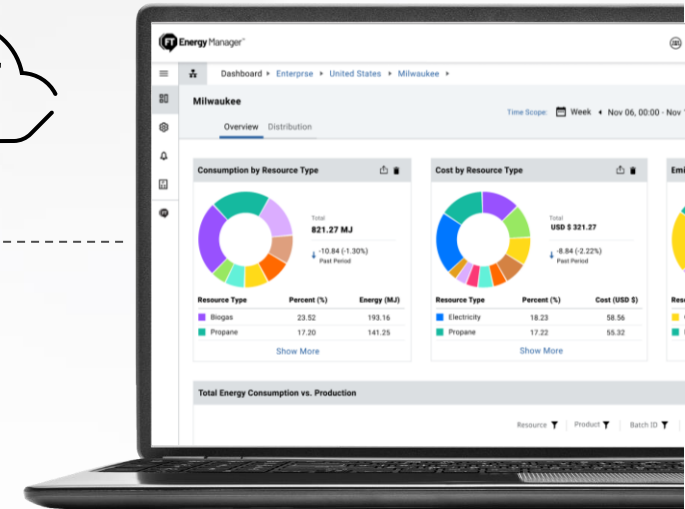
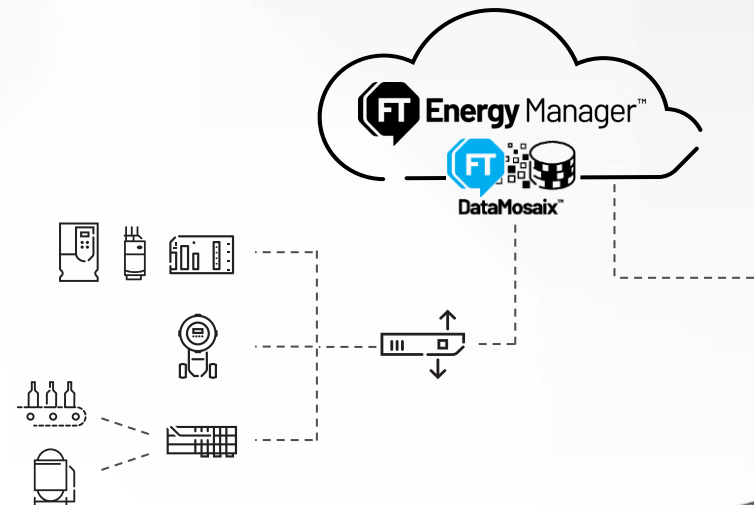
BENEFITS



ACCELERATE your digital transformation with industrial DataOps and achieve sustainability goals



FASTER TIME-TO-VALUE with a ready to use and lifecycle managed solution



Explore FactoryTalk® Energy Manager™



Application Configuration
Alerts and Notification
Reporting

Production or Process Data

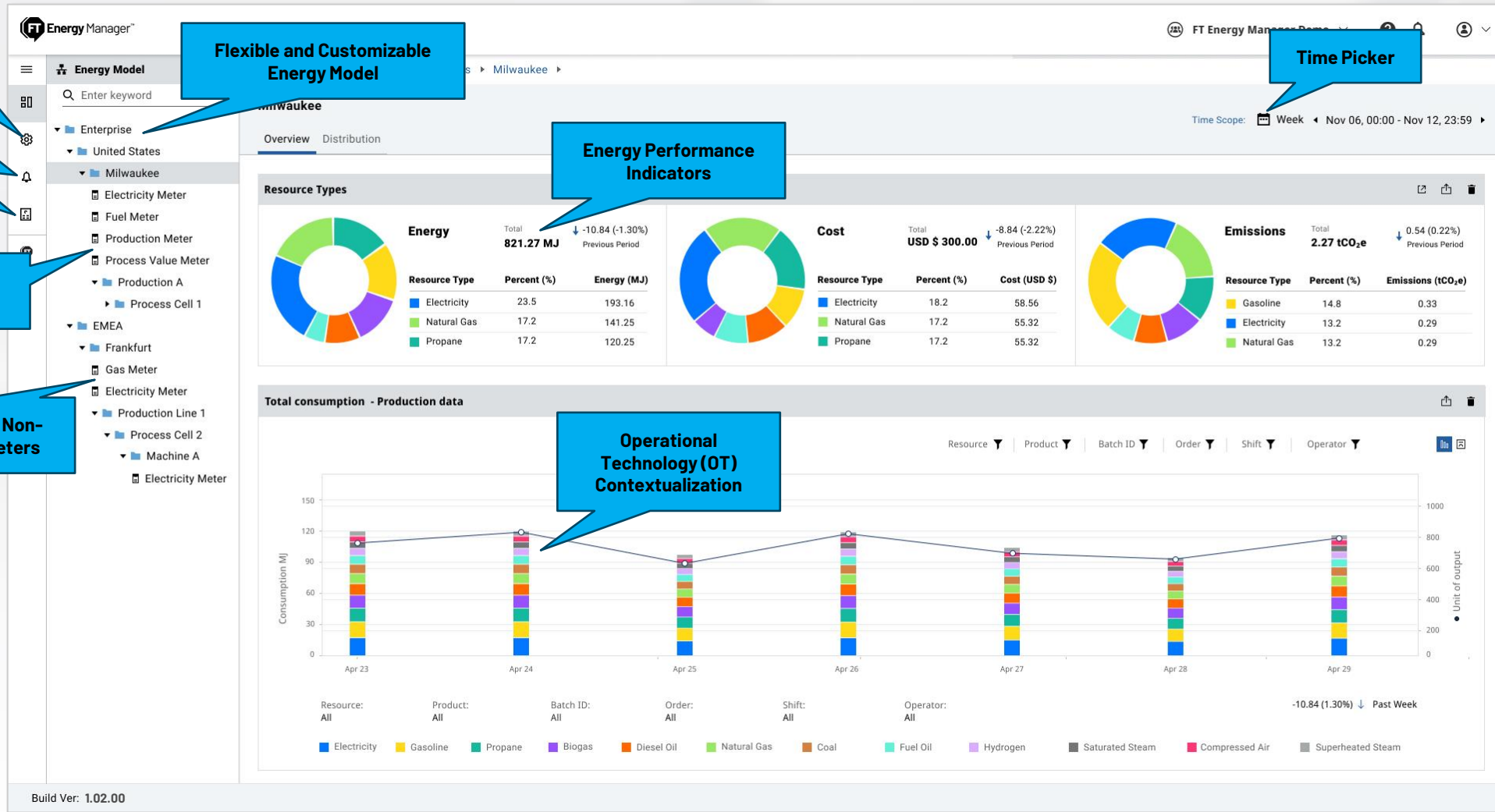
Electrical or Non-electrical Meters

Flexible and Customizable Energy Model

Time Picker

Energy Performance Indicators

Operational Technology (OT) Contextualization



Build Ver: 1.02.00

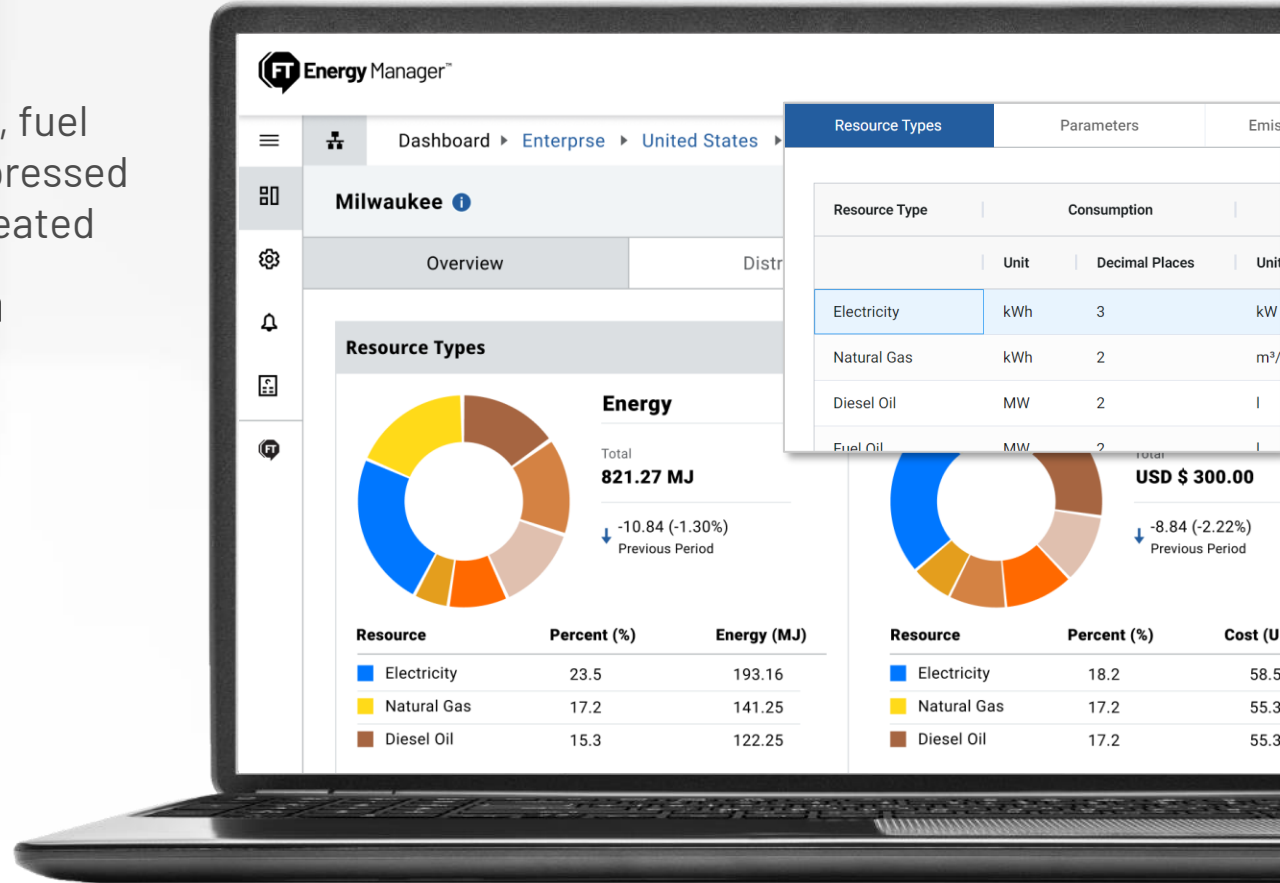


Integration of electric and all non-electric resources



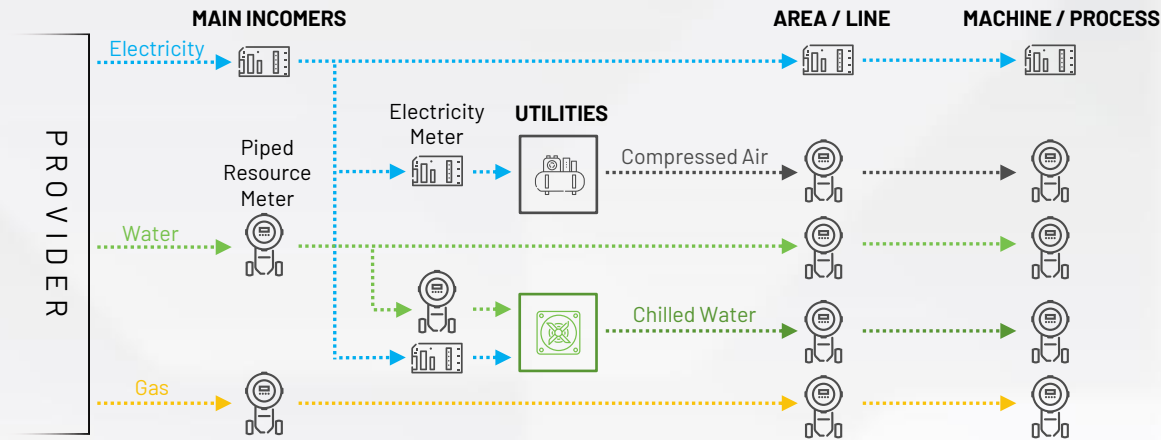
Gain a complete understanding of your energy consumption and emissions

- Supported electric and non-electric resources
 - Electricity, natural gas, biogas, propane, hydrogen, diesel oil, fuel oil, gasoline, crude oil, coal, tallow, water, wastewater, compressed air, chilled water, hot water, steam saturated, steam superheated
- Automatic unit conversion and unit harmonization
- Pre-built energy and emission calculations
- Predefined data models

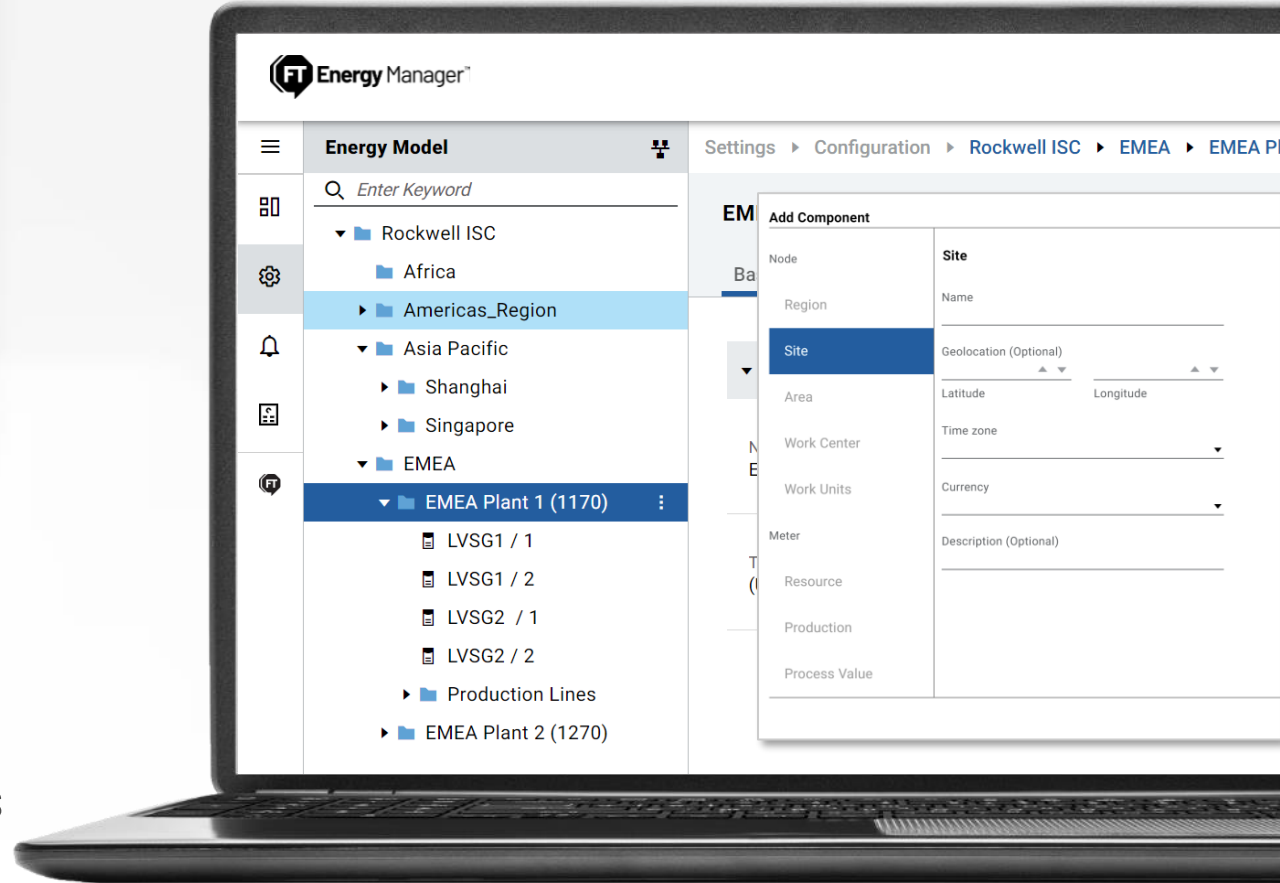


Flexible and customizable energy model

The first step in gaining control is to measure all the resources flowing through your system



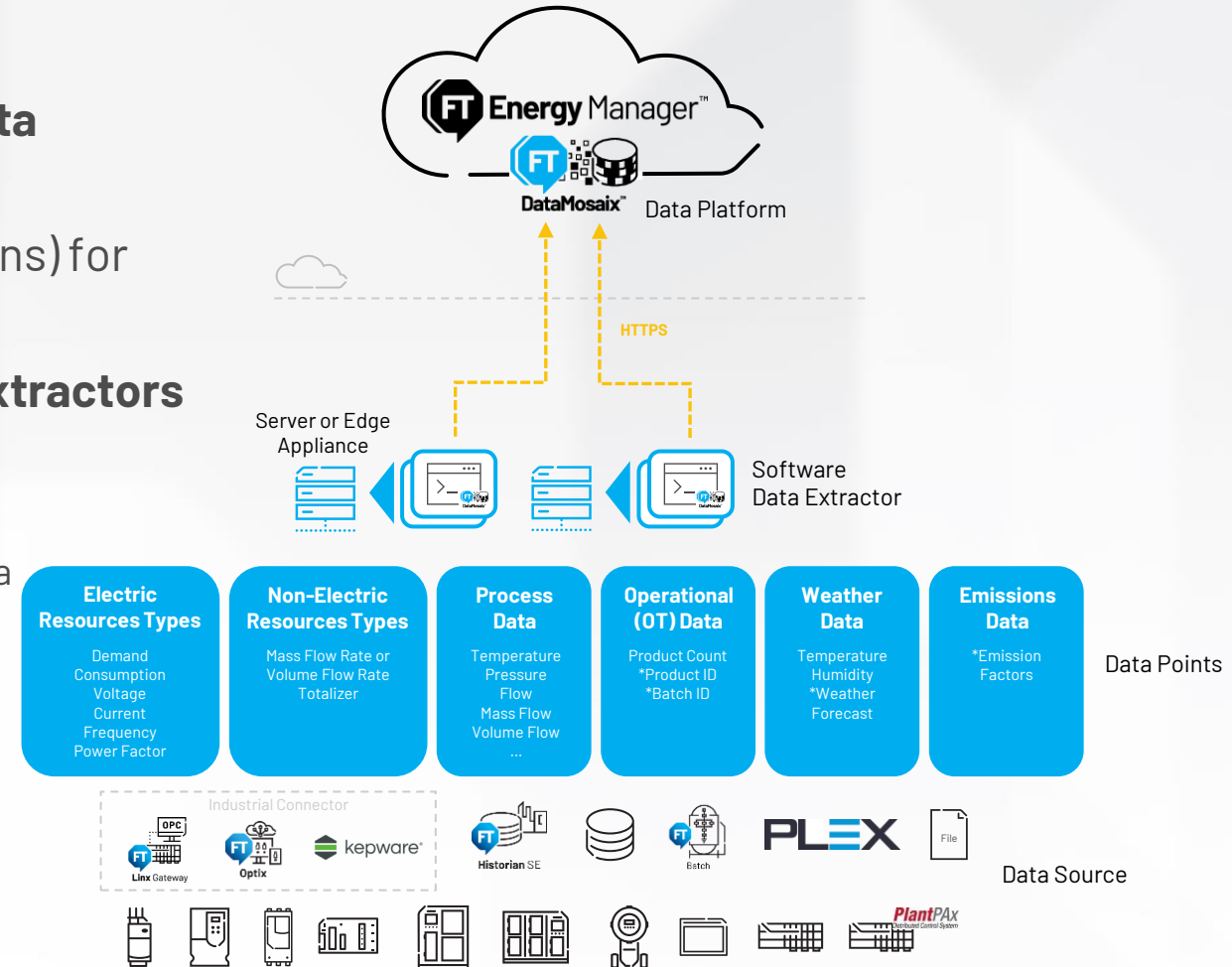
- Create a **digital twin** of your energy infrastructure with a configurable energy model hierarchy
- Make use of **pre-built dashboards** for every level of the hierarchy
- **Add additional data points** like production counts or process values to the hierarchy to further contextualize energy data



Real-time data acquisition and monitoring

Unified data onboarding experience

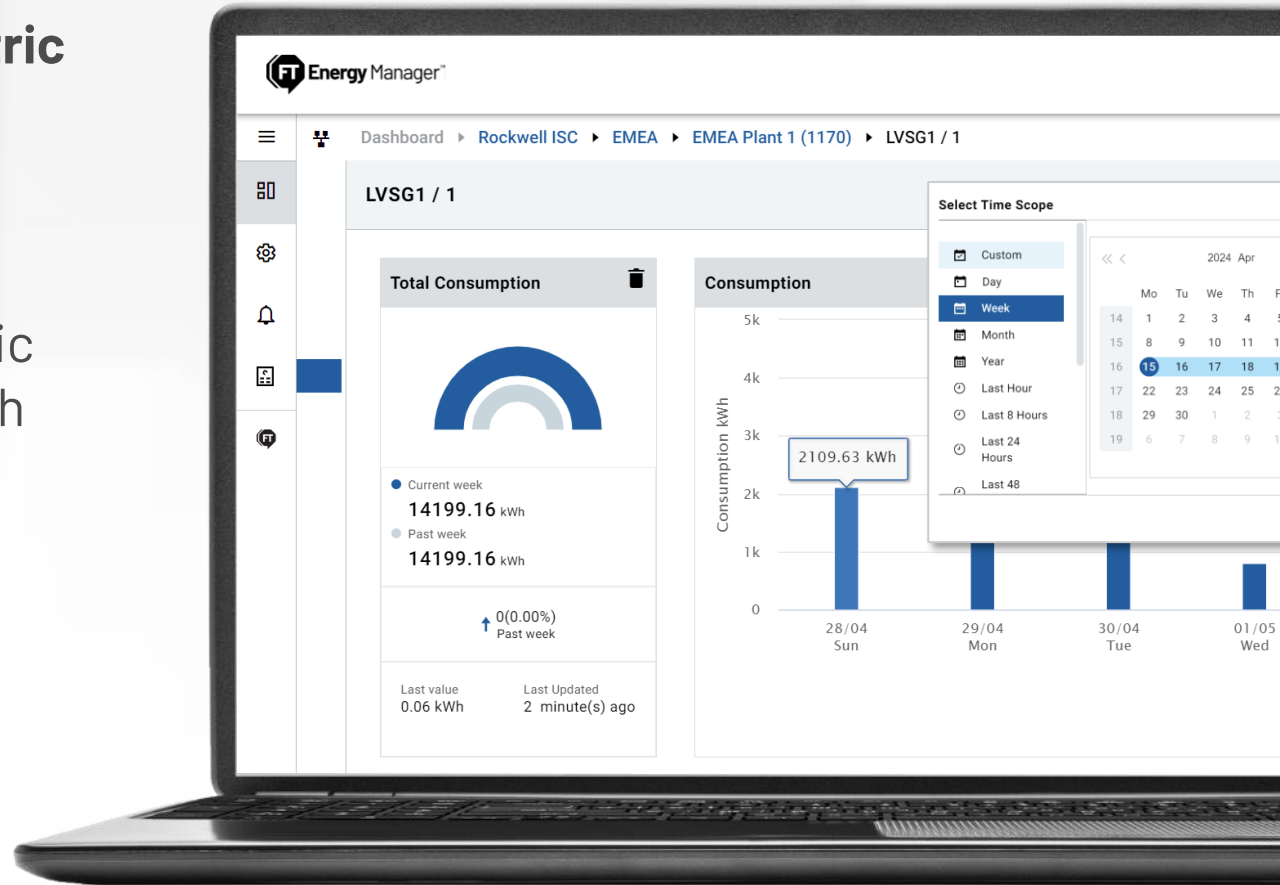
- Access and onboard **energy, operational or process data** wherever it lives
- Leverage **Rockwell Device Libraries** (Add-On Instructions) for enhanced energy data visibility
- Stream or upload data using **pre-built Software Data Extractors**
 - **OPC-UA** extractor to connection data points via FactoryTalk® Linx, FactoryTalk® Optix™ or Kepware
 - **FactoryTalk® Historian** extractor to connect to existing Historian data
 - **ODBC** extractor to onboard data from databases
 - Create a **custom extractor** if your source type cannot be used with any of the available extractors
 - Well documented and **easy to configure** software extractor file
 - Update **frequency** or **data persistence** (Failure-Buffer) can be configured within the **extractor configuration file**



Pre-built dashboards to report on energy performance indicators

Track and analyze usage

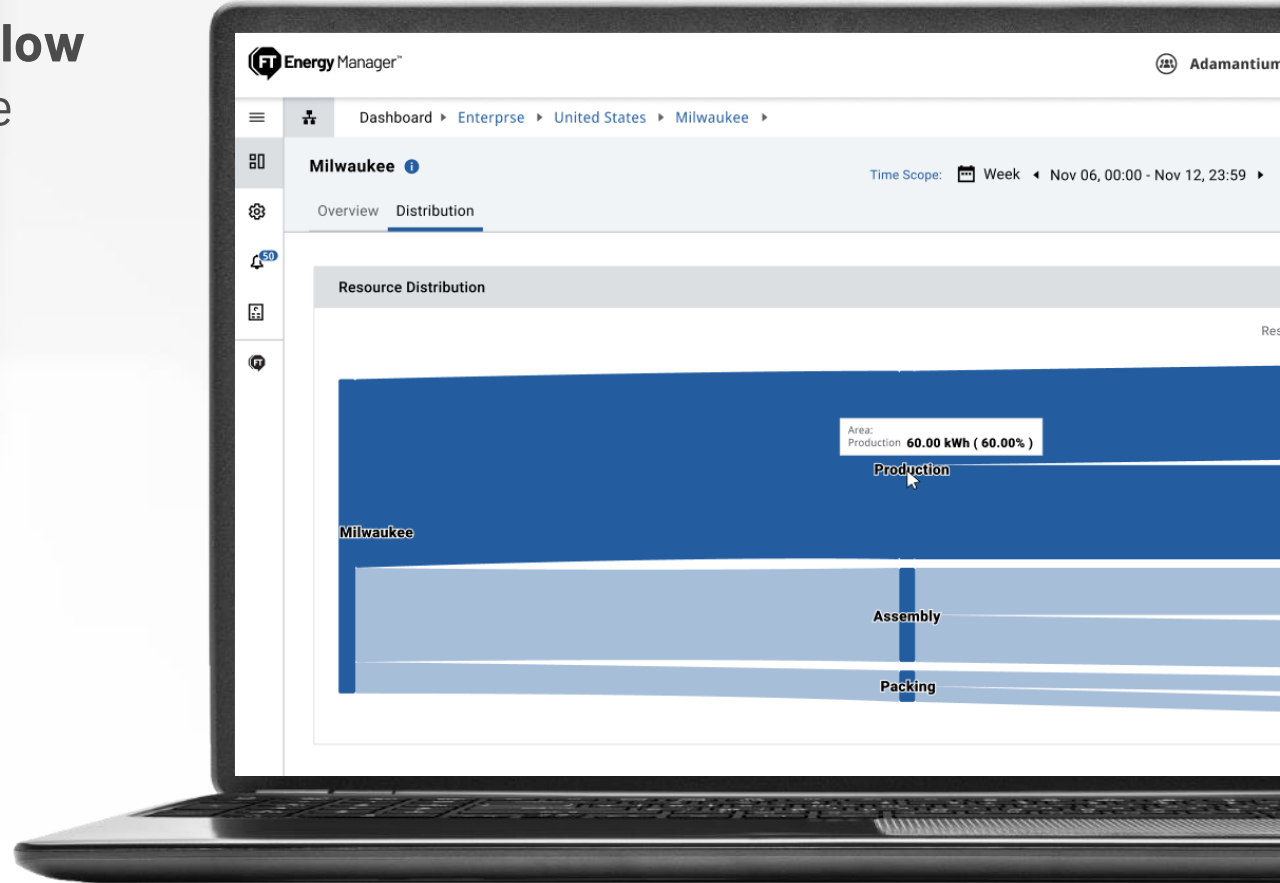
- **Consumption** charts for **electric** and **all non-electric resource types**
- Understand energy consumption **at every level** within an organization
- Ability to track and analyze usage against a specific time or understand **total energy consumption** with predefined time scopes



Pre-built dashboards to report on energy performance indicators

Track and analyze usage

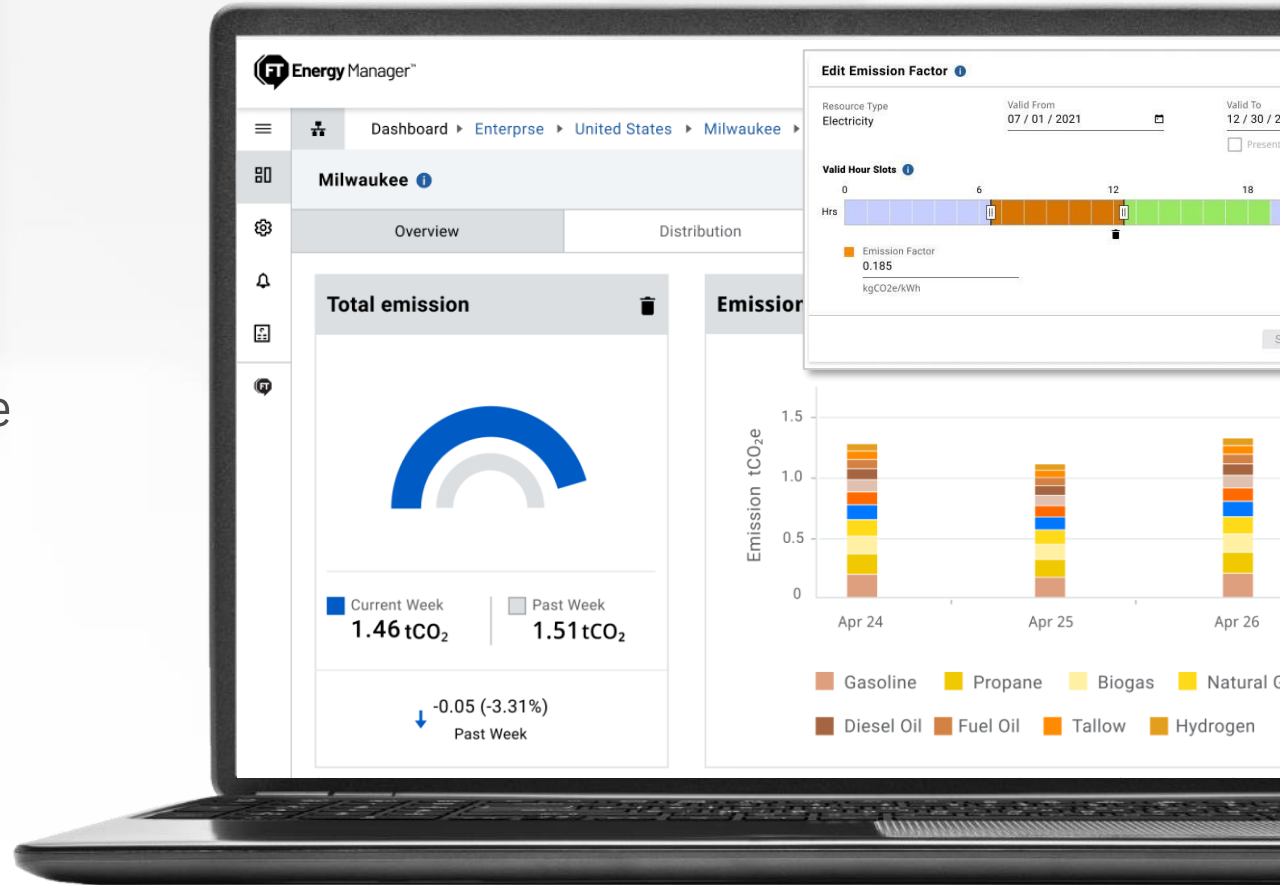
- Consumption **Sankey** diagram to understand the **flow** and **distribution** through the energy infrastructure



Pre-built dashboards to report on energy performance indicators

Report on Scope 1 and Scope 2 emissions

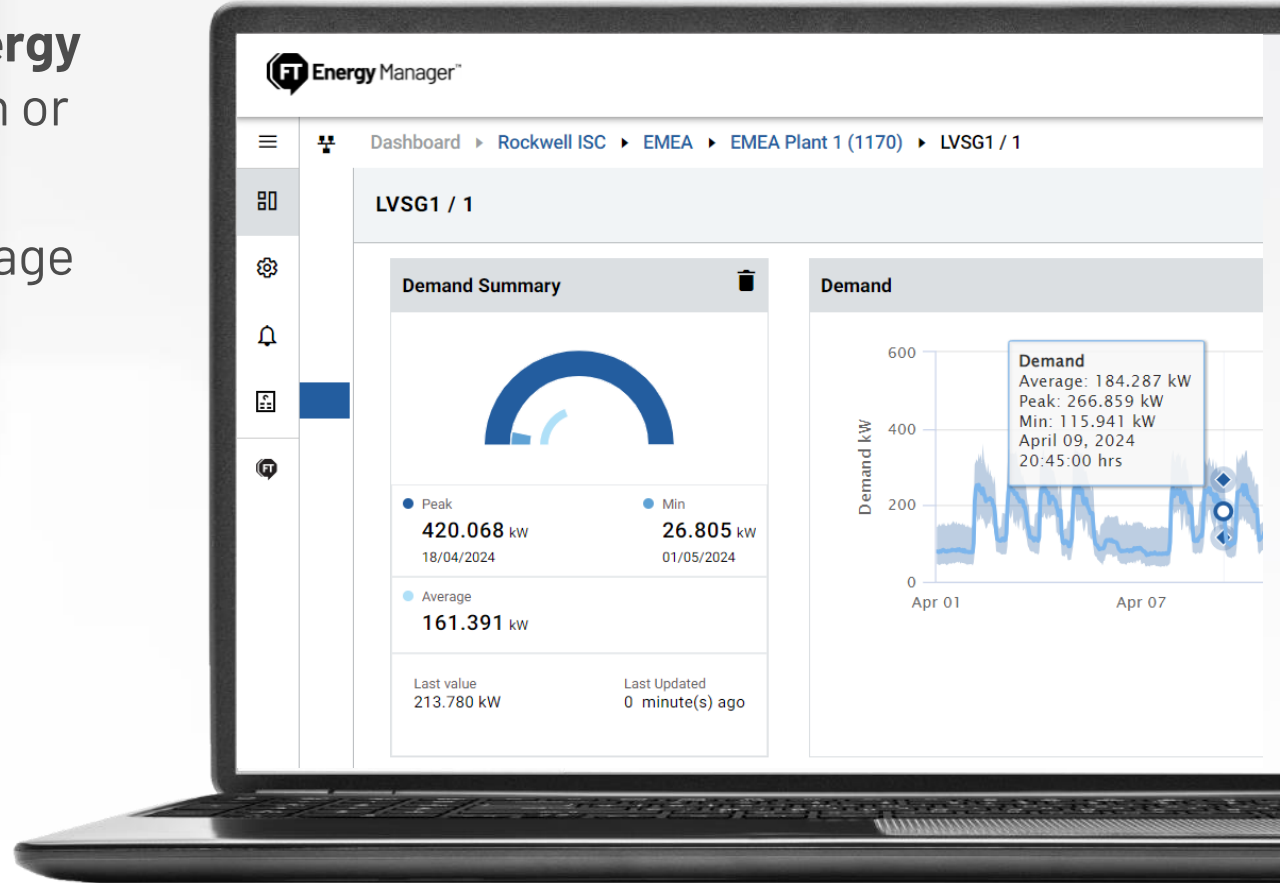
- Understand **carbon intensity** and report on the amount of emissions (CO₂e) per resource type (CO₂e per kWh)
- Report on **total carbon emissions** resulting from energy consumption over a specific time scope
- Ability to track and analyze emissions against time and understand **total emissions with predefined time scopes**
- Configurable **emission factors** by resource type



Pre-built dashboards to report on energy performance indicators

Demand or flow rate monitoring

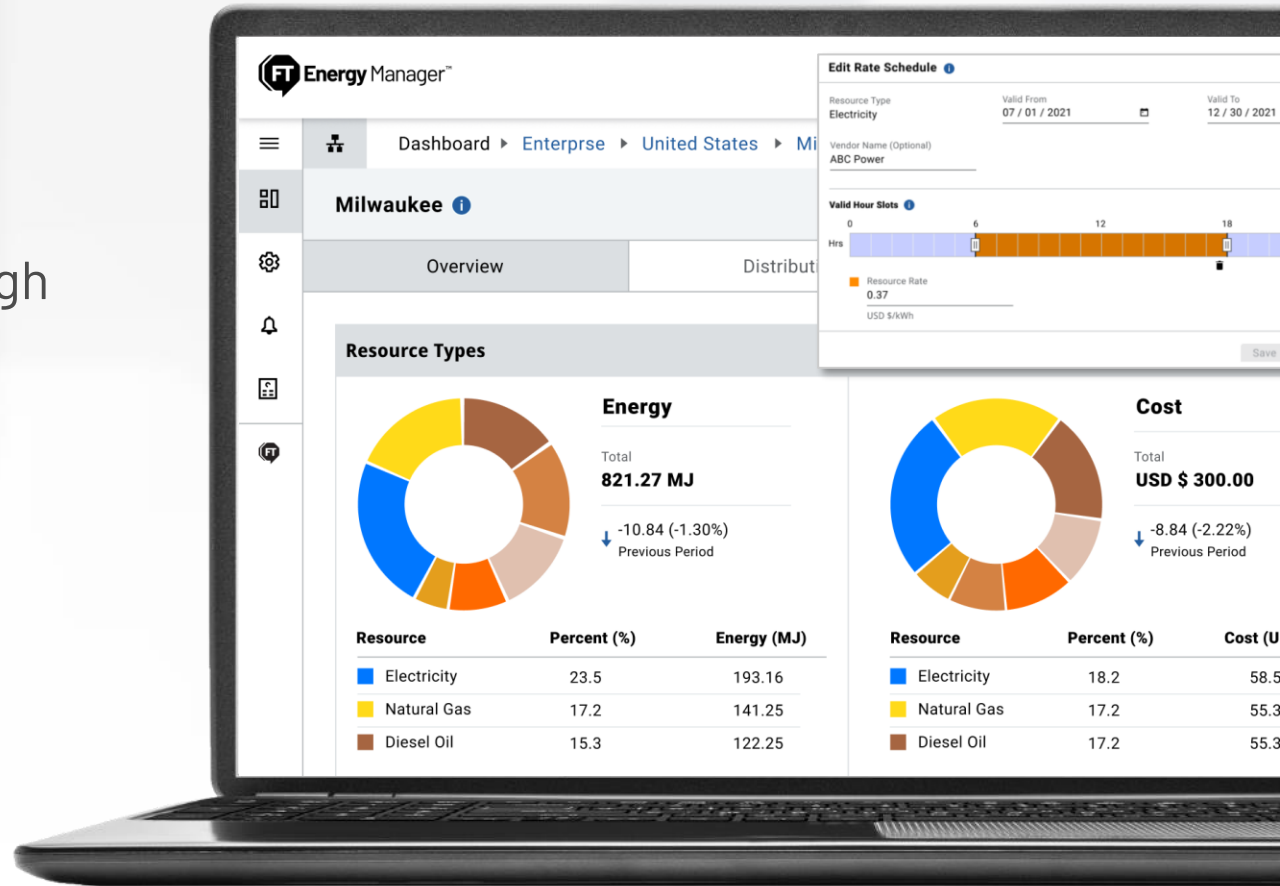
- Continuously track and analyze the **amount of energy or flow rate at a given time** in a particular location or asset
- Understand and **identify peak**, minimum and average demand



Pre-built dashboards to report on energy performance indicators

Energy cost allocation

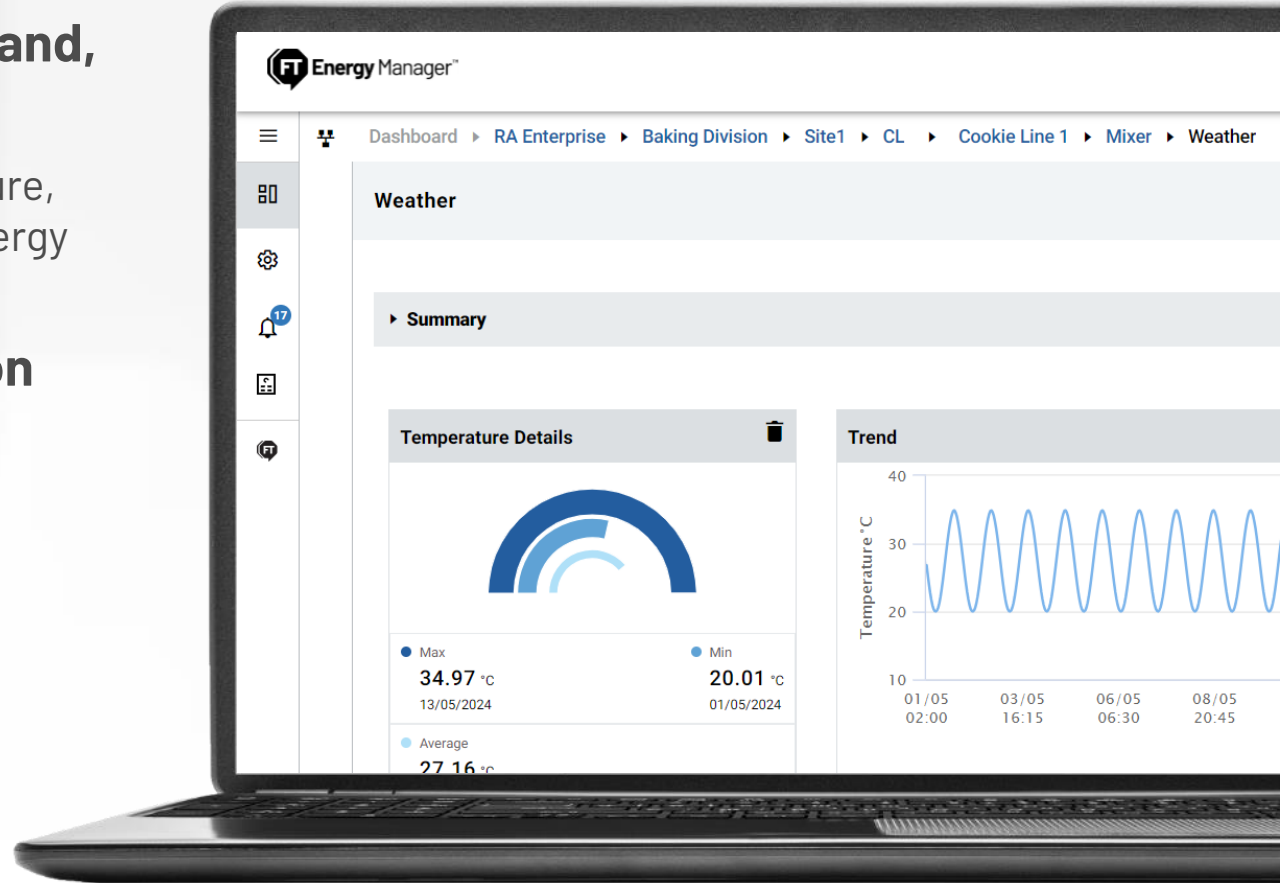
- Understand **energy costs** at **every level** within an organization
- Analyze **energy cost by resource type**
- Easy to **configure rate schedules** for low and high tariffs



Pre-built dashboards to report on energy performance indicators

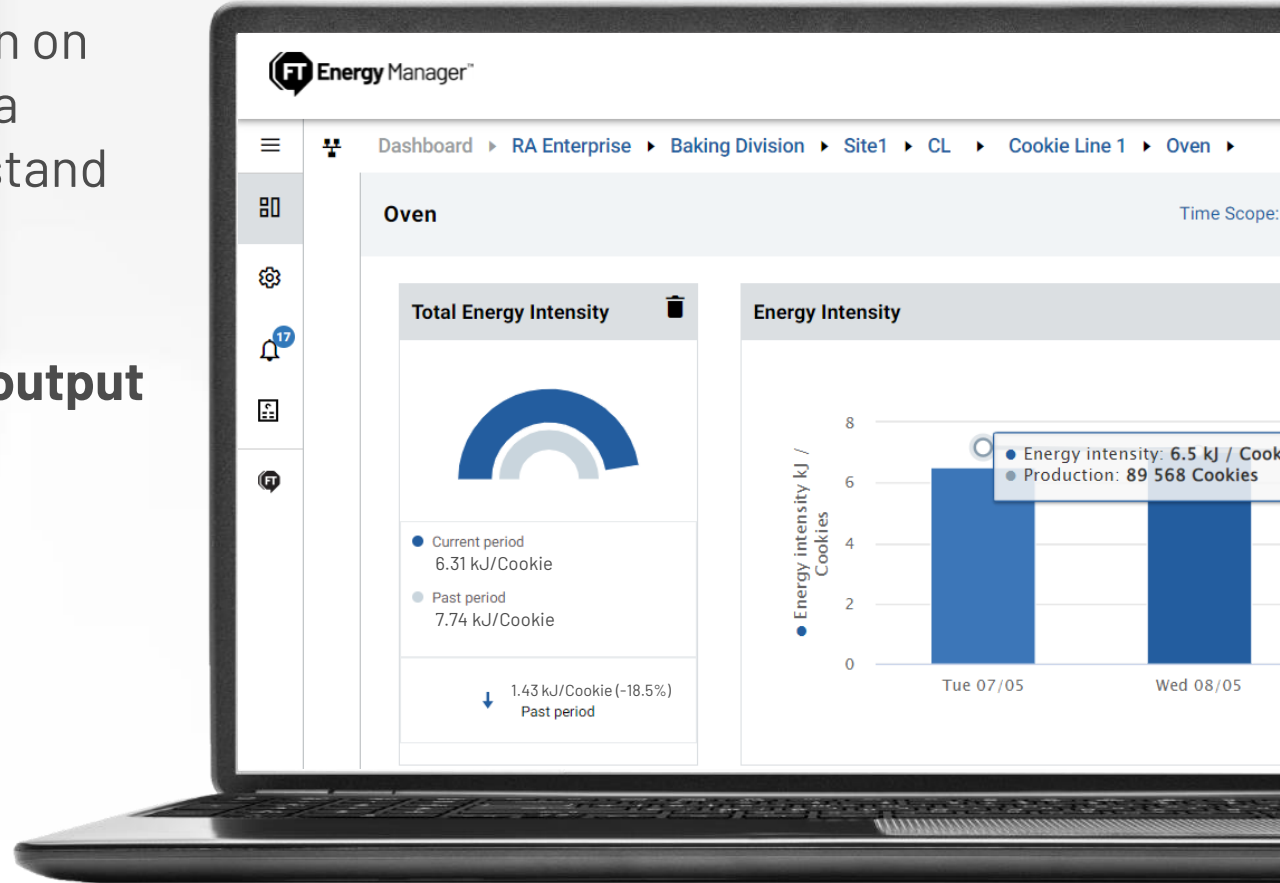
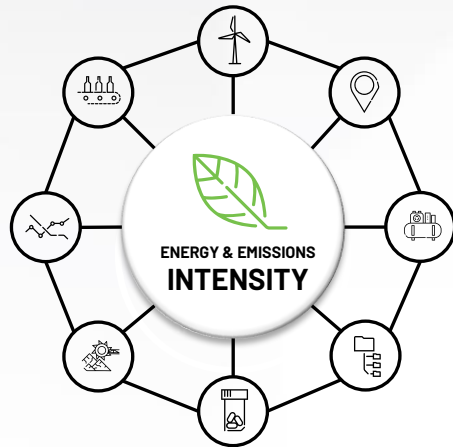
Analyze how process and environmental factors influence energy performance

- Monitor **any variables** that **affect** the **energy demand, consumption or emissions**
 - Supported process variable measurement types - temperature, pressure, volume, volume flow, mass, mass flow, energy, energy flow
- **Automatic unit conversion** and **unit harmonization**



Contextualize energy data with operational technology (OT) data and understand energy intensity or emissions intensity

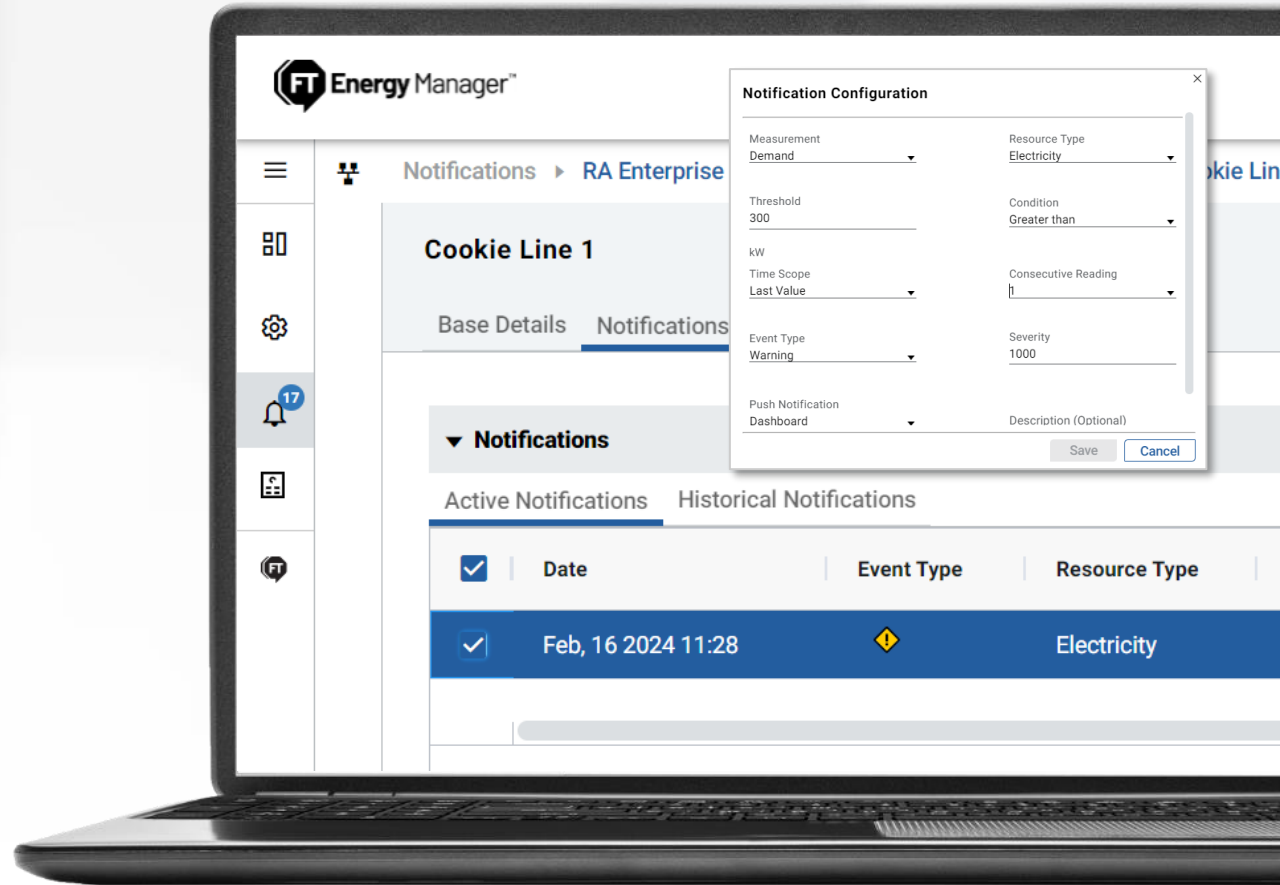
- Get insights **at every level** within your organization on **energy intensity**, energy consumption relative to a specific metric like **production output** and understand **how efficiently energy is being used**
- Understand **emissions intensity** or the amount of **greenhouse gas emissions produced per unit of output**



Alerts and notifications via email

Stay connected and notified

- **Configure thresholds** on energy performance indicators and get notifications via email



Build the foundation and accelerate the digital transformation

Connected Enterprise® (Scalable Digital Transformation)

Traditional Approach



Point Solutions



Data Silos



Difficult to scale



Data Platform



Lower total cost of ownership



Easy to scale



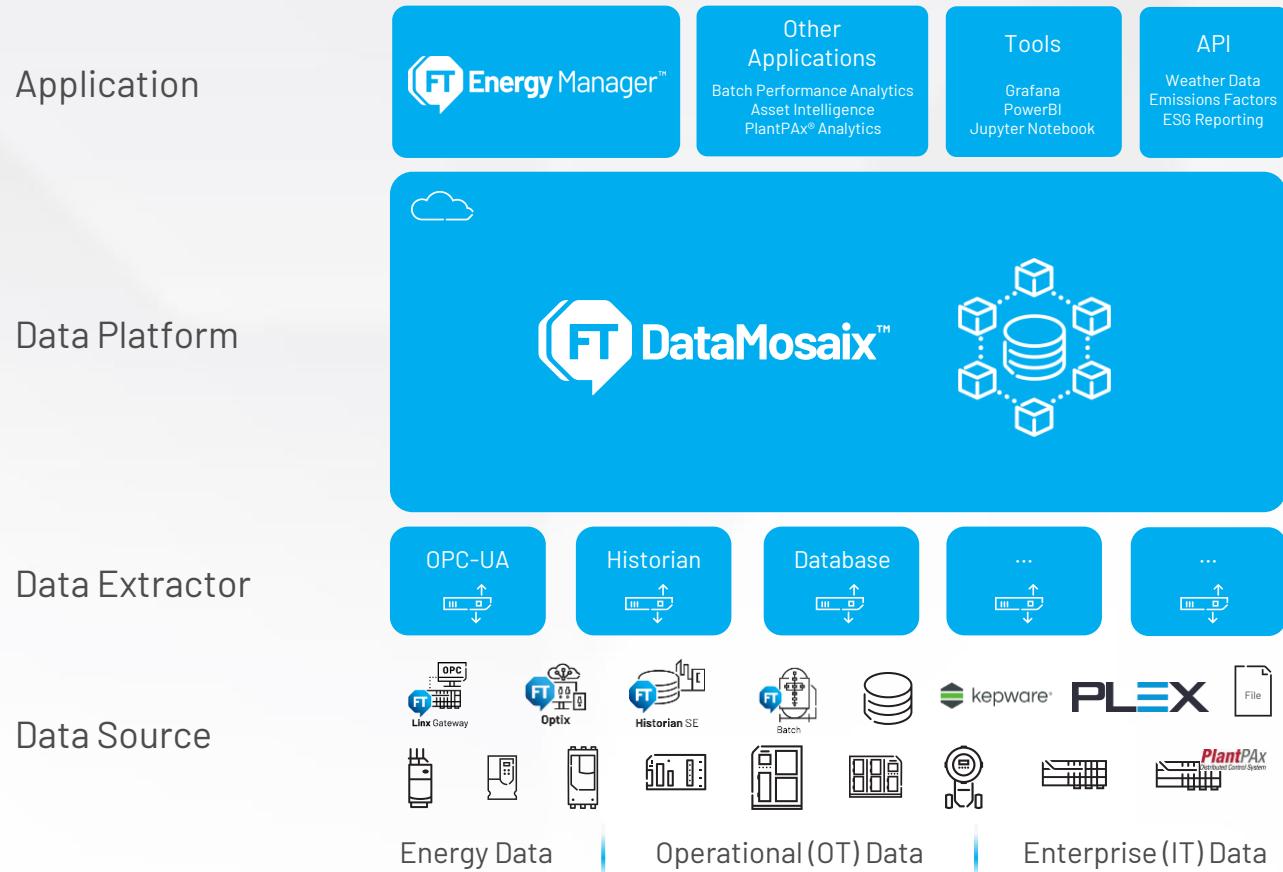
Faster time-to-value



Make data valuable

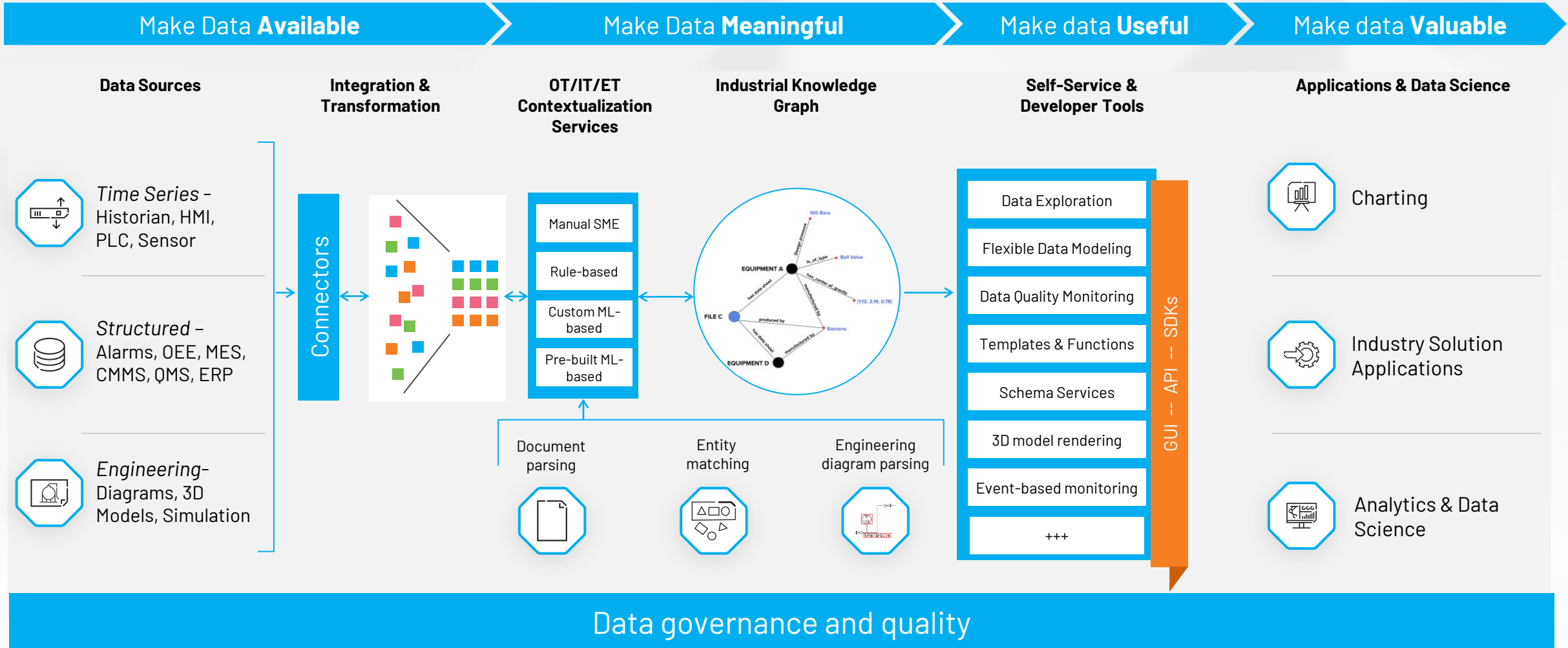
Accelerate your digital transformation with industrial DataOps

FactoryTalk® DataMosaix™ SaaS enables controlled access to relevant and contextualized data. It's an industrial DataOps solution that provides flexible and scalable tools to accelerate data usability by domain experts and analysts.



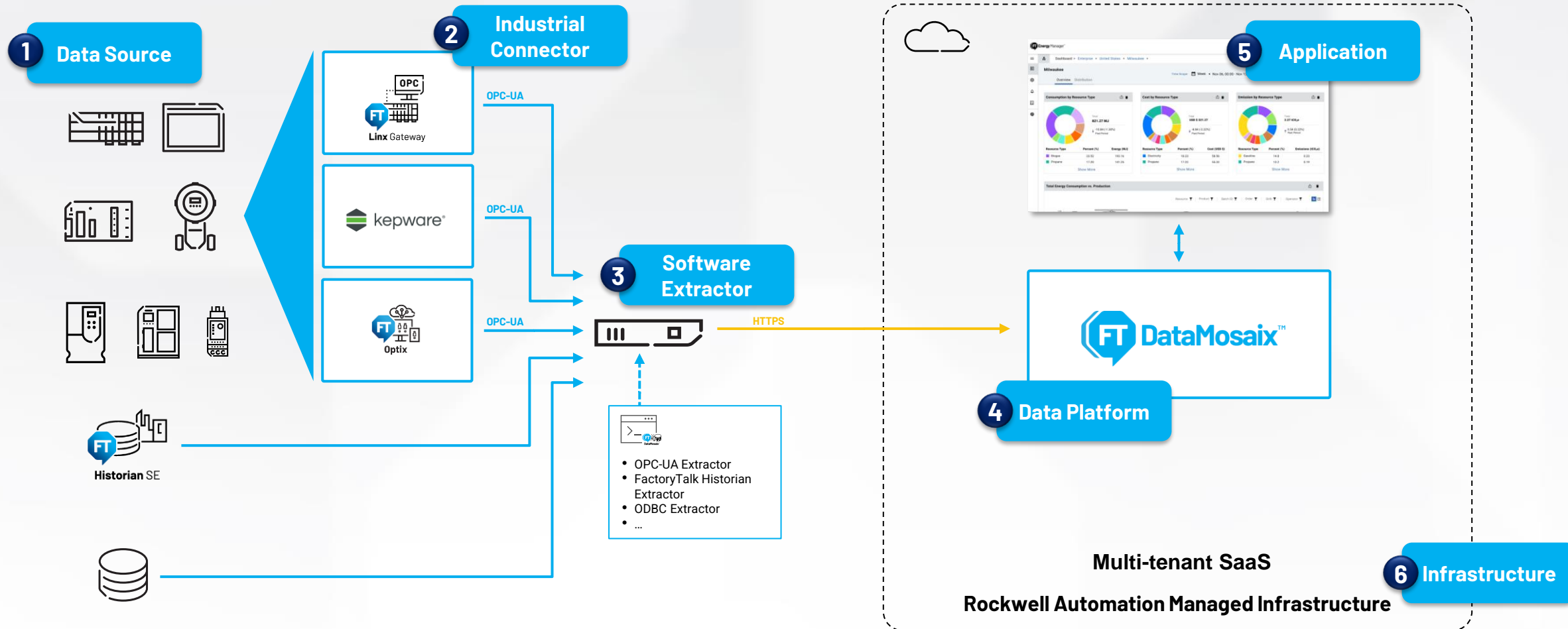
- **Use Pre-built Applications** - Out-of-the-box, ready to use industrial Energy Management and Optimization application that accelerates time to value
- **Connect Industry Standard Visualization and Analytics Applications** - Extend and build custom dashboards with Grafana, PowerBI or Jupyter Notebook with the same contextualized data
- **Integrated Solution** - Exchange data via standard APIs with other services or applications to enable further use cases
- **Enable Charting and No-Code Analytics** - Access contextualized data with powerful, no-code experience to perform industrial data analytics, troubleshooting and root cause analysis
- **Automate Data Contextualization** - Deploy FactoryTalk Energy Manager faster at scale across the enterprise and create meaningful relationships between data to accelerate analytics
- **Simplify Data Connectivity** - Pre-built OT and IT data extractors to access operational, energy and process data wherever it lives

Expose industrial data to realize value through apps and analytics



Marketecture and building blocks

FactoryTalk® DataMosaix™ SaaS (Multi-tenant SaaS)



FactoryTalk® Energy Manager™ SaaS



FASTER **TIME-TO-VALUE**

Reduce development time and benefit from automatic updates and product enhancements



CLOUD ESSENTIAL

Break through your data silos to make better business decisions

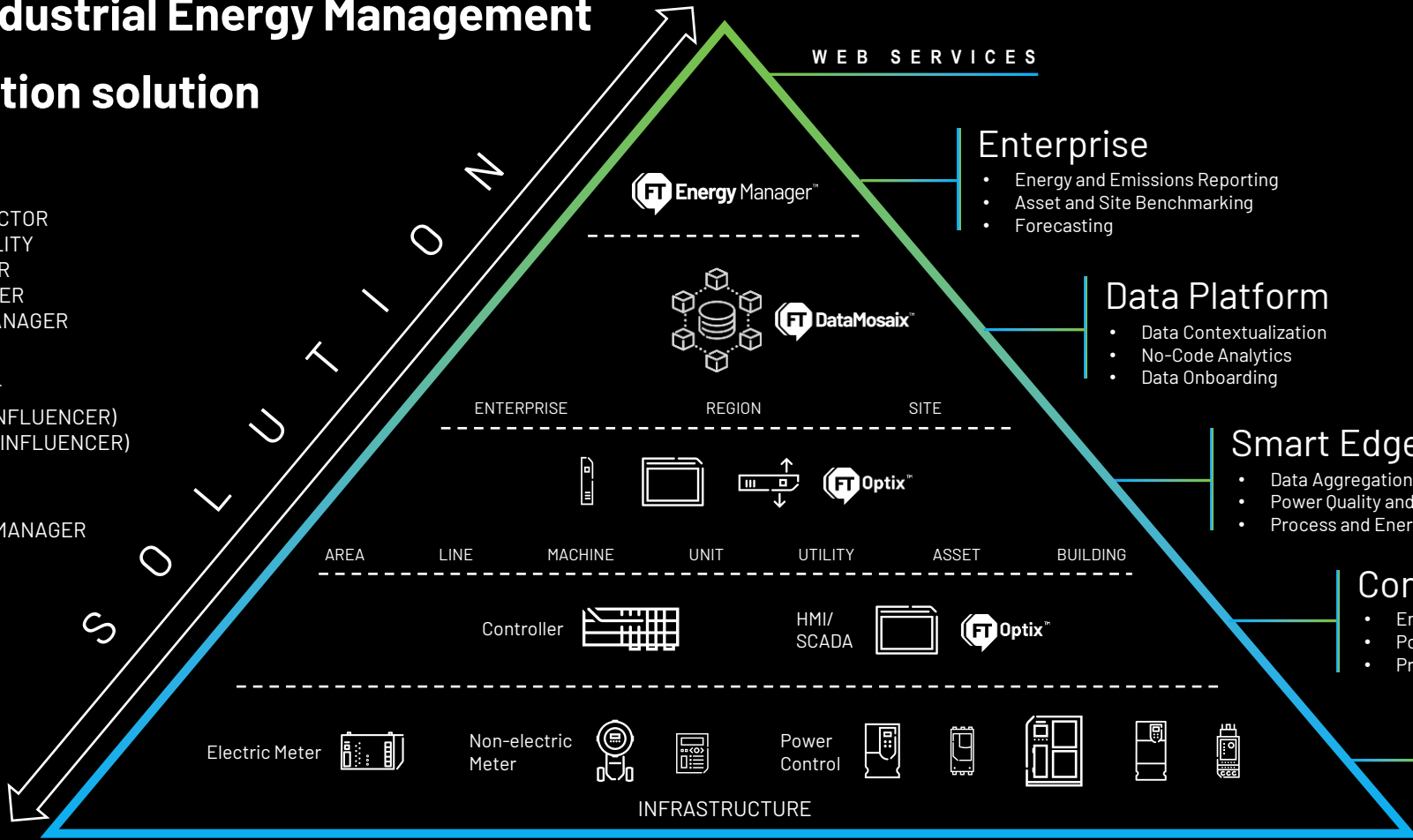


SCALABLE

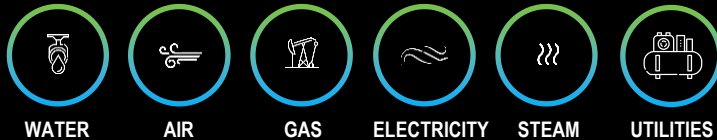
Gain real-time insights across your enterprise and reduce complexity and lower the total cost of ownership

Integrated industrial Energy Management and Optimization solution

- MANAGING DIRECTOR
VP SUSTAINABILITY
PLANT MANAGER
ENERGY MANAGER
OPERATIONS MANAGER
- DATA SCIENTIST
CIO MANAGER (INFLUENCER)
CISO MANAGER (INFLUENCER)
- MAINTENANCE MANAGER
OPERATOR
- TECHNICIAN



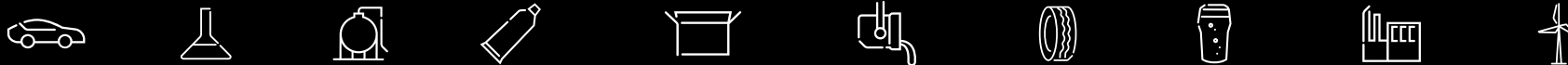
ENERGY DATA



OPERATIONAL (OT) DATA



INDUSTRIES



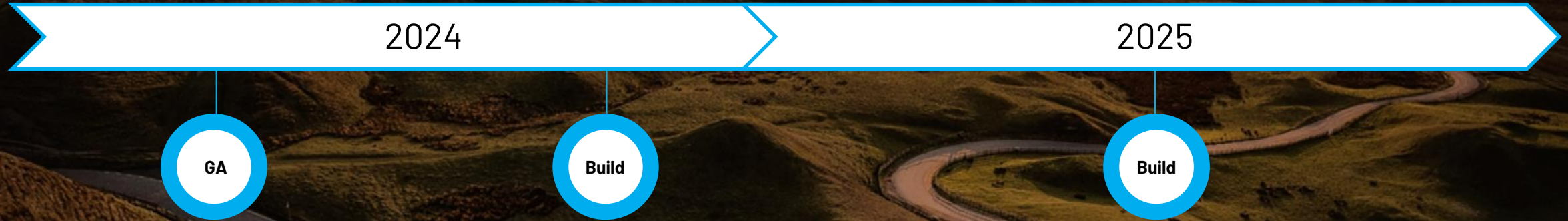
REDUCE
Carbon intensity of fossil production

REMOVE
Carbon in the air and capture emission

USE LESS
Energy through efficiency and optimization

ACCELERATE
Renewable & Low Carb Energies

Outcome-based roadmap



Capabilities:

- Foundational architecture
- Core EMS capabilities
- Monitoring of the key energy performance indicators
- Energy distribution dashboard
- Energy baseline, targets and savings
- Advanced energy data contextualization
- Power quality monitoring
- Energy efficiency and performance of utilities
- Advanced GHG reporting
- Energy performance and emissions prediction
- Energy performance correlation
- Anomaly detection root cause analysis
- Power generation and renewables
- Energy generation and demand optimization
- Advanced cost/billing

Infrastructure Options



SaaS

(Multi-tenant SaaS)

FactoryTalk® DataMosaix™

SaaS

Rockwell Automation Managed Infrastructure



Private Tenant



Private Cloud

FactoryTalk® DataMosaix™

Private Cloud

Customer Managed Infrastructure



On-Premise