



expanding **human possibility**®

FactoryTalk DataMosaix Knowledge Transfer for Partners

PARTNER TECHNICAL ENABLEMENT



PUBLIC

Your Presenters



Leonardo Silva Costa (Leo)

Partner Enablement Technical Consultant
EMEA

leonardo.silvacosta@rockwellautomation.com



Peter Quinn

Product Manager FT DataMosaix
peter.quinn@rockwellautomation.com



Kevin Olikara

Commercial Portfolio Manager
Data and Application Platforms
kolikara@rockwellautomation.com



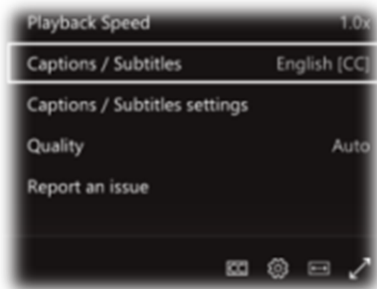
Cory Bodnar

Manager, Partner Enablement
Technical Consultant
cbodnar@rockwellautomation.com

Housekeeping



- Post questions thru Q&A icon
- In case you have any questions post the session, please, write us at ptec@rockwellautomation.com
- To turn on live captions and subtitles, select **Captions/Subtitles On**



- Recordings/Collaterals in our KTP page
- Scan the QR code for direct access to the KTP page
- If you don't have access, please, write to us at ptec@rockwellautomation.com



- We are always looking for feedback to improve the KTP initiative – your voice matters
- Please, by the end of each session, help us to improve by investing 1 minute to fill the survey



Agenda

1

THE INDUSTRY
CHALLENGES

2

OUR INTEGRATED
APPROACH

3

THE DATAOPS
SOLUTION &
DEMO

4

DRIVING
OPERATIONAL
VALUE

5

PRÉ-REQS TO
WORK WITH
FTDM

6

LICENSING

7

WRAP-UP

The industry challenges



**Rockwell
Automation**

You need data to solve challenging problems

Reliability Engineers



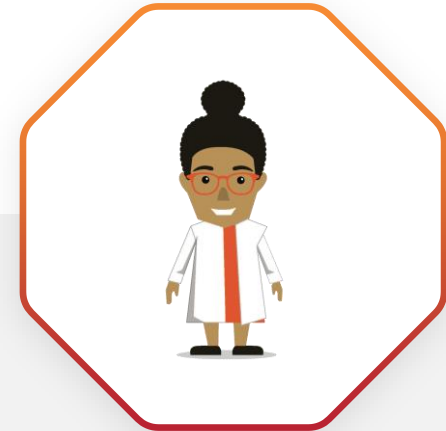
“What were the root causes of an equipment fault that led to unplanned downtime and how can I predict it?”

Process / Manufacturing Engineers



“What process variables or environmental factors contributed to lower-than-expected yields?”

Data Scientists



“What are the critical factors to include in a predictive model to anticipate and avoid an out-of-specification finished product?”

What tough problems are YOU trying to solve with data?

The data you need exists in many different types and structures

Unstructured

- Process Diagrams
- Application code
- Test records
- Digital Twins
- Work instructions
- Video / Imagery

Relational

- Batch records
- MES data
- ERP data
- Devices information
- OEE

Time Series

- Real time values
- Sensor data
- Performance

Events

- Activity logs
- Maintenance records
- Alarms
- Work orders

Operate

Design

Maintain

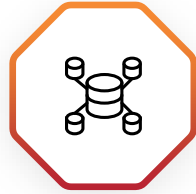
Barriers to maximizing the value of your data

Lack of open, contextualized, governed, scalable data strategy



Point Solutions

Point solutions are useful for solving individual pain points but don't make it easier to solve the next problem



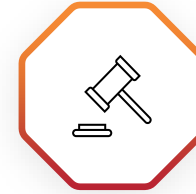
Data in Silos

IT, OT and ET (engineering) data live in silos and are difficult to use in combination



Data Lacks Context

Data lacks context making it difficult to understand and use except by experts



Data isn't Trusted

Data is poor quality, untimely, with no owner and governance process, yielding untrusted insights



Difficulty Scaling

Scaling application deployments and repeatability of solutions across units, lines and sites is onerous and time consuming

DATA: UNLOCKING A COMPETITIVE OPPORTUNITY

This survey shows that a third of data goes unused. Many manufacturers see that increased technology adoption creates vast amounts of data, which can be harnessed and analyzed to improve performance and increase profits.

Respondents stated a need for better data and analytics usage to drive positive business outcomes over the next five years, citing this as a competitive shortfall;



40% more manufacturers say they lack the ability to use data to make decisions to outpace the competition in 2023 compared to last year.

Driving Improvements Over the Next 5 Years



Q. How do you plan to drive positive business outcomes over the next five years? Select top 5

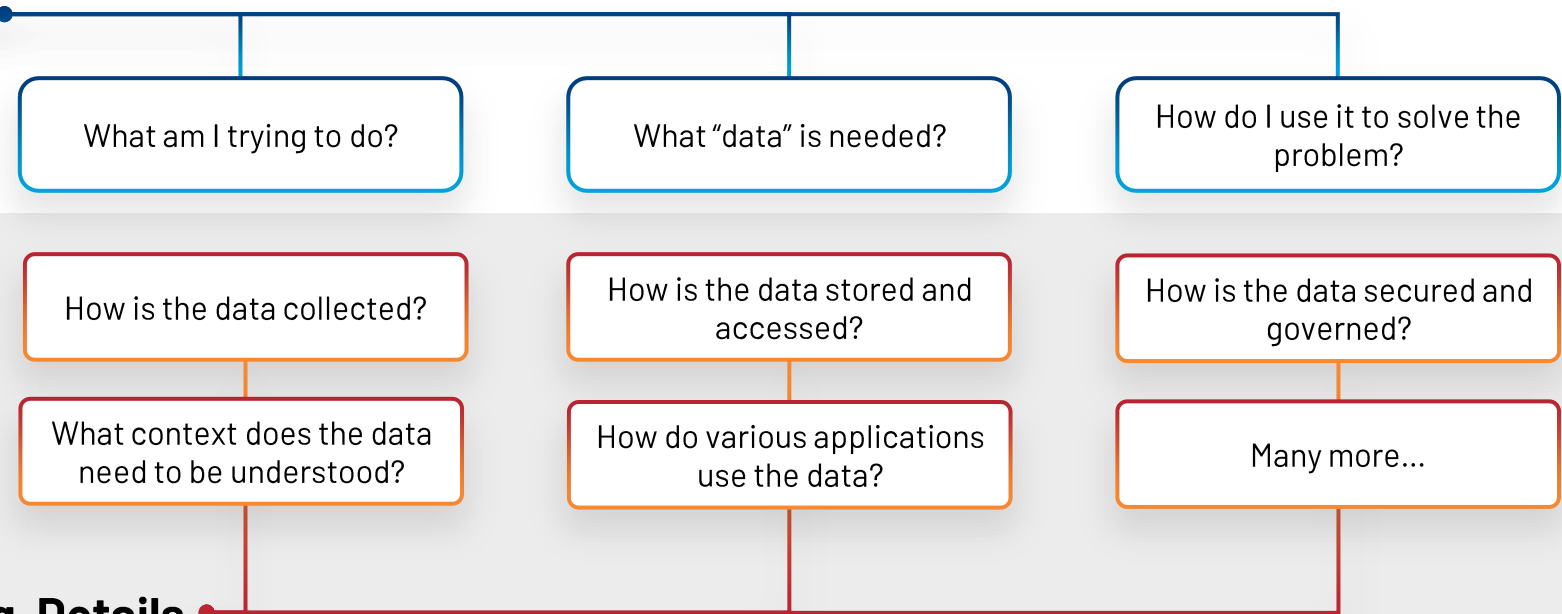
Base: 1353

Why is it so hard?

When exploring solutions

Typically...only a few simple questions are asked

Visible



Underlying Details

When implementing the solutions

The tough challenges must be solved to succeed

What makes DataOps *industrial* ?



An industrial DataOps solution simplifies and accelerates the journey to scalable and sustainable digital transformation

Standard OT Connectivity

Industrial data is trapped in many disconnected systems.

Industrial DataOps simplifies access to industrial data sources with standard connectivity.

Scalability for Industrial Data

Industrial systems have massive amounts of time series data.

Industrial DataOps simplifies scaling to the quantity and variety of data that's needed.

Links Digital to Physical

Industrial organizations live in the physical world.

Industrial DataOps simplifies contextualizing data with diagrams, images and 3D models that represent the real-world environment.

OT / Production Self Service

Transformation happens when people change the way they work.

Industrial DataOps simplifies adoption with data contextualization, discovery and modeling tools geared for industrial users.

Engineering Analysis

Domain experts need to conduct complex engineering analysis.

Industrial DataOps simplifies both ad-hoc and repeatable data analysis using engineering functions and simulation data.

Industrial DataOps unlocks transformation value for industrial enterprises



20 – 30% reduction in maintenance costs



50 – 60% improvement in worker productivity



5 – 8% reduction in asset downtime

*Results based on previous deployments

Integrated Approach



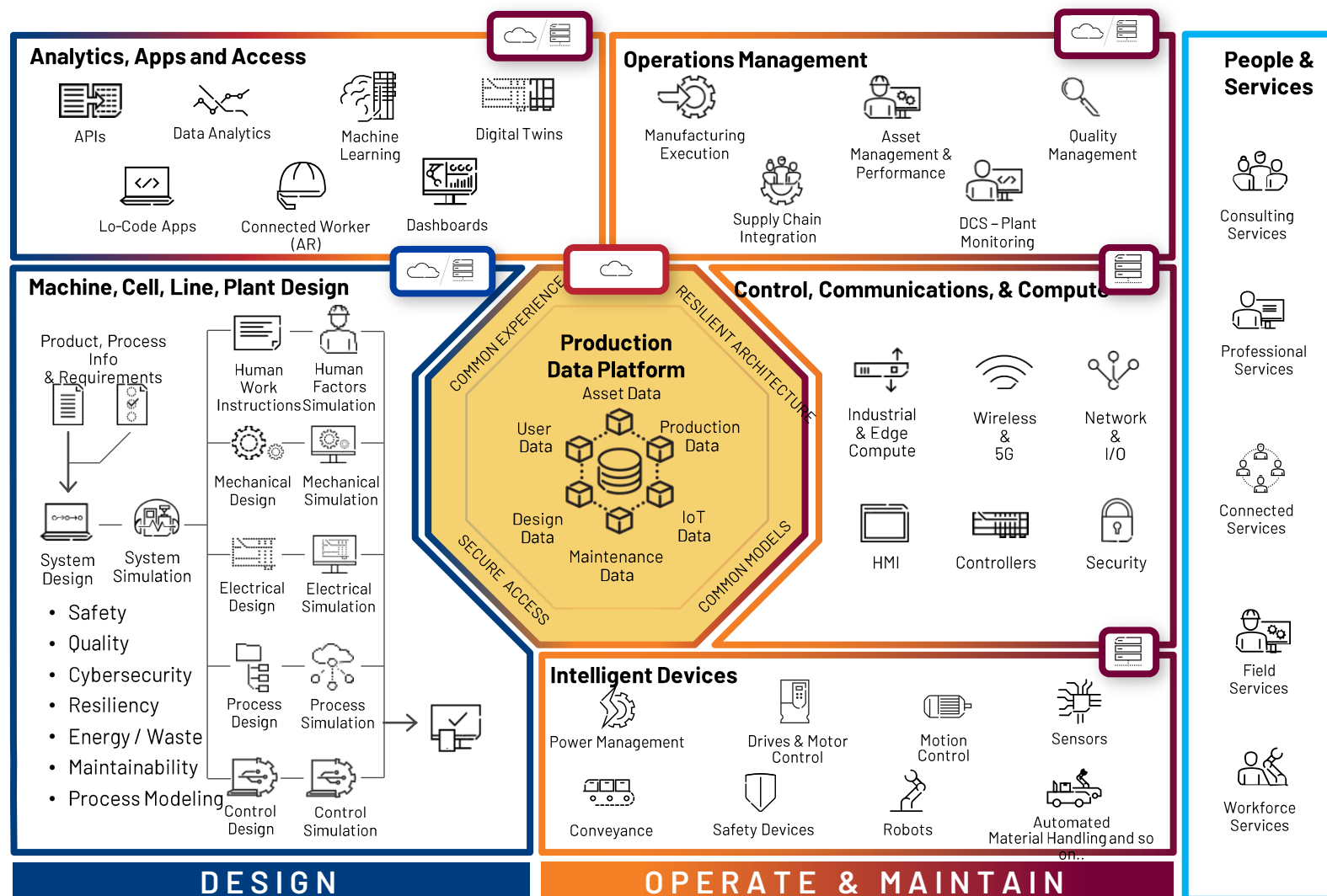
**Rockwell
Automation**

The Connected Enterprise® Production System

Transforming manufacturing throughout the lifecycle

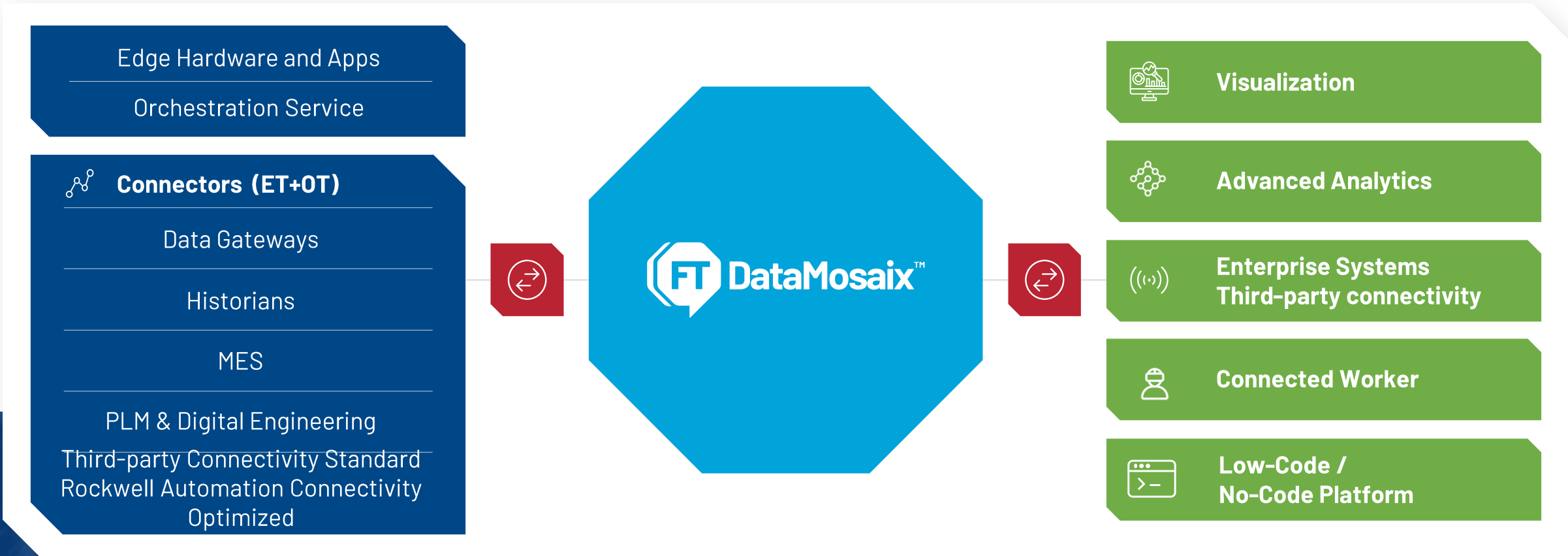
Using data and automation to connect people, processes and tools so they can operate at maximum capacity

Engineered for agility, scalability and security with data at its core



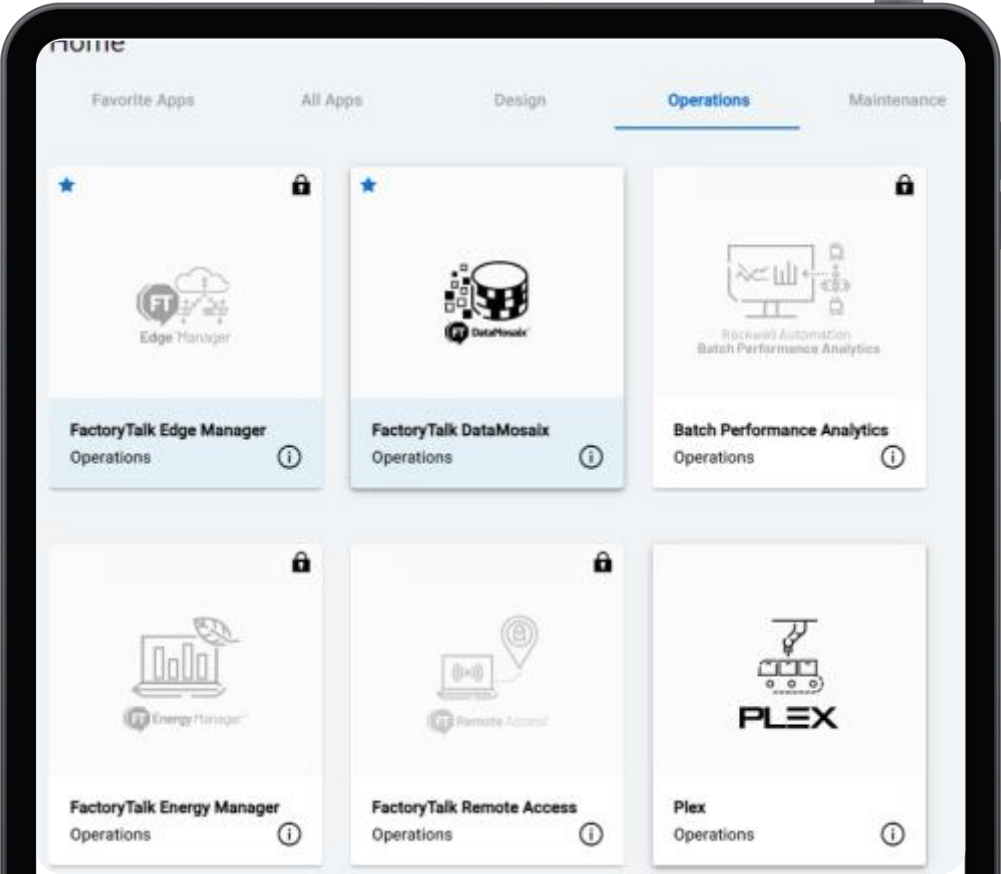
Introducing FactoryTalk® DataMosaix™

Transform your data into value with a SaaS Industrial Data Hub



Bringing industrial DataOps to FactoryTalk® Operation Hub™

FactoryTalk® DataMosaix™ is part of a comprehensive and rapidly growing SaaS portfolio



Benefits of SaaS



Lower total cost of ownership

No need for a large team to manage custom digital infrastructure



Faster time to value

Leverage the skill sets your workforce already have



More predictable costs

No unplanned capacity expansions or cost overruns



Greater agility

Scale as needed and adopt new capabilities faster



Optimized system performance

Purpose built for large quantities of time-series data



Maintain ownership of your data



Let's explore more...



**Rockwell
Automation**

You have data: Now what?

Having access to your data is the beginning. Putting it to work for you is the next step.



Available

Standard connectivity to IT/OT/ET data from industrial data sources at scale.

Improve organizational productivity with all relevant data already in one place.



Meaningful

AI-supported **and scalable contextualization** of data across data sources, allowing for data to be interpreted and understood in the relevant business context.



Useful

Easy to search single source of information with full traceability for **unparalleled self-service data discovery, orchestration and solution development.**

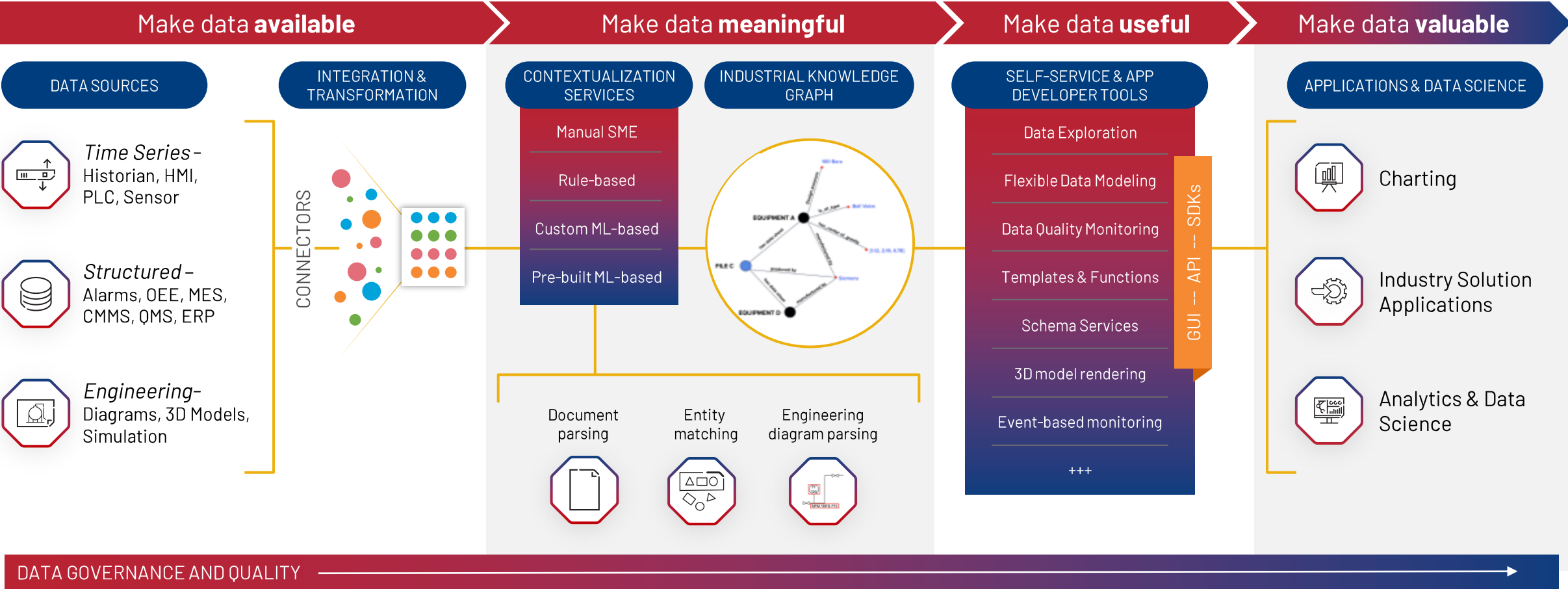


Valuable

Real-time visualization and advanced analytics applications deployed at scale that drive **optimal decision-making and autonomous closed-loop actions.**

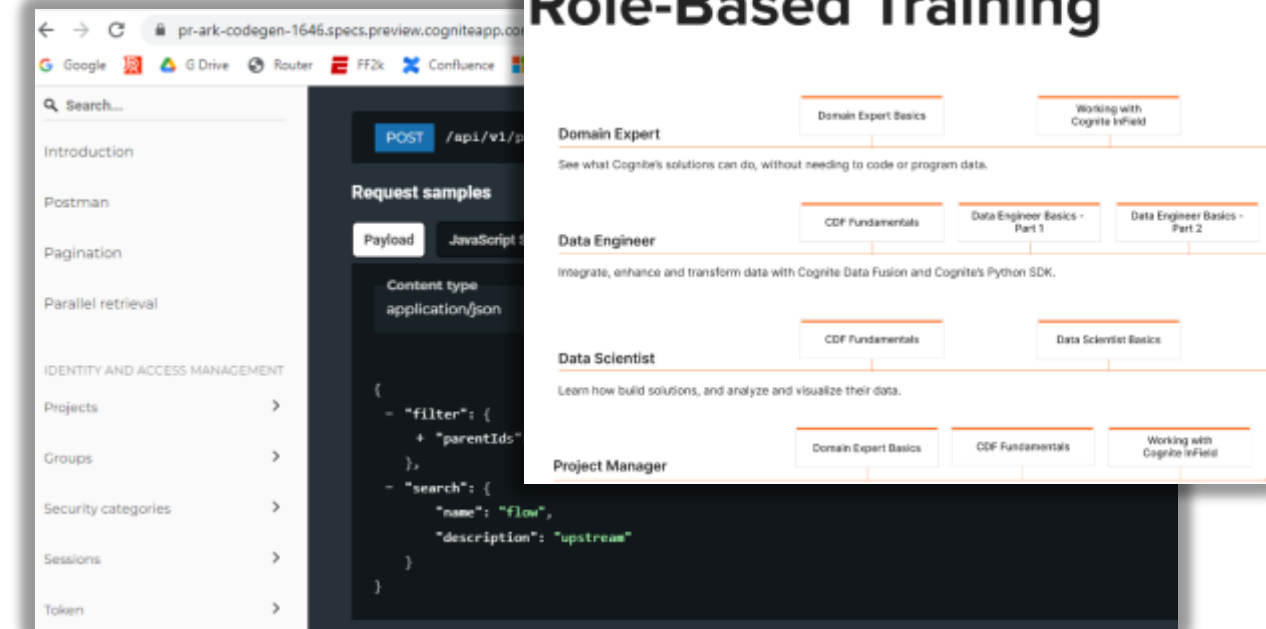
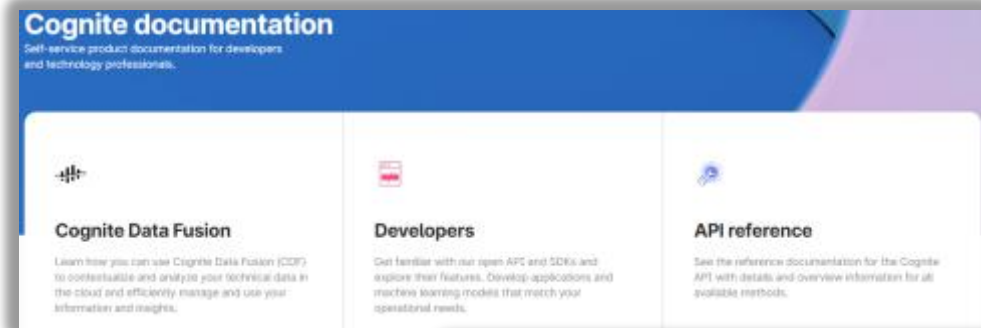
FactoryTalk® DataMosaix™ Overview

Expose industrial data in an Industrial Knowledge Graph to realize value through apps and analytics

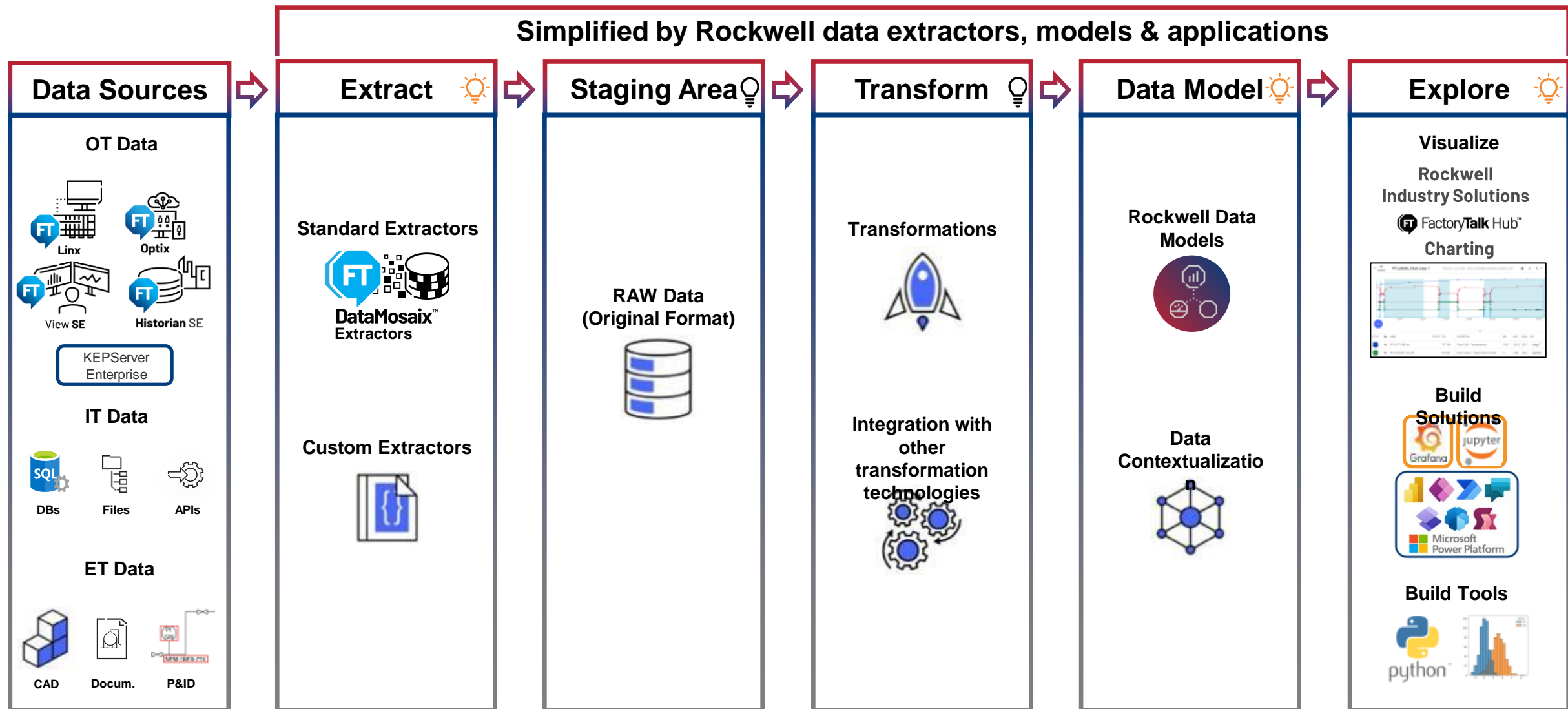


Application developer services

- Public git hub repository
- SDK for Javascript, Java, Python
- REST API
- GraphQL API for complex data models
- Extractor toolkit/sample code
- Extensive community and training material
- Connectors for Grafana, PowerBI and Jupyter Notebook available



Simplified Architecture



Data Extraction

Prebuilt Extractors to common industrial data sources and systems



30+ prebuilt extractors including:

- OPC DA, HDA and UA
- FactoryTalk® Optix
- FactoryTalk® Historian SE
- OSI PI / PI AF
- DB (ODBC)
- File
- Documentum and D2
- SAP
- Hosted Extractors (Event Hub / MQTT / Kafka)

More extractors for FactoryTalk® products coming soon!

Custom Extractor Templates

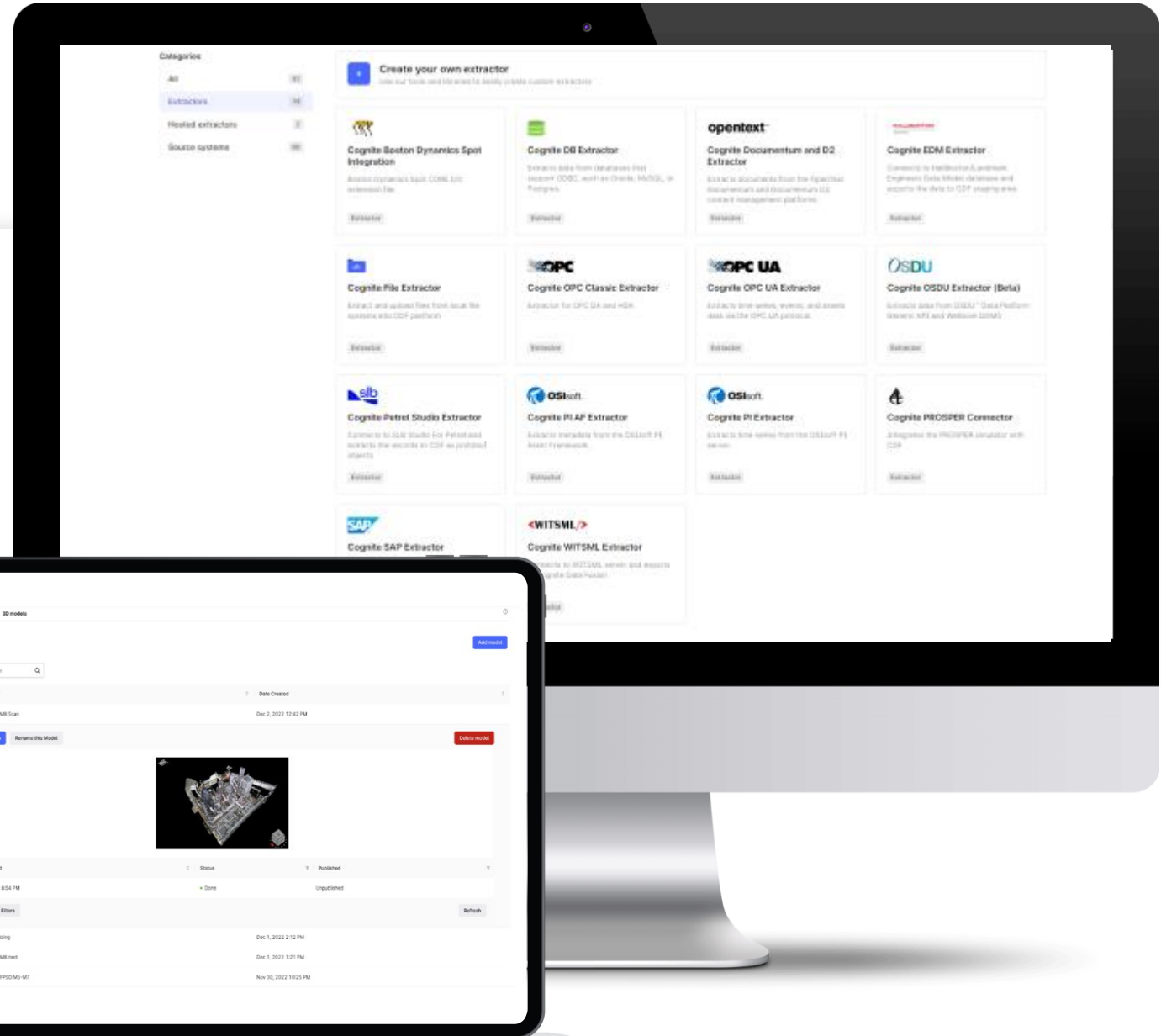


Pre-built functionality to quickly develop extractors to highly customized solutions.

3D Models



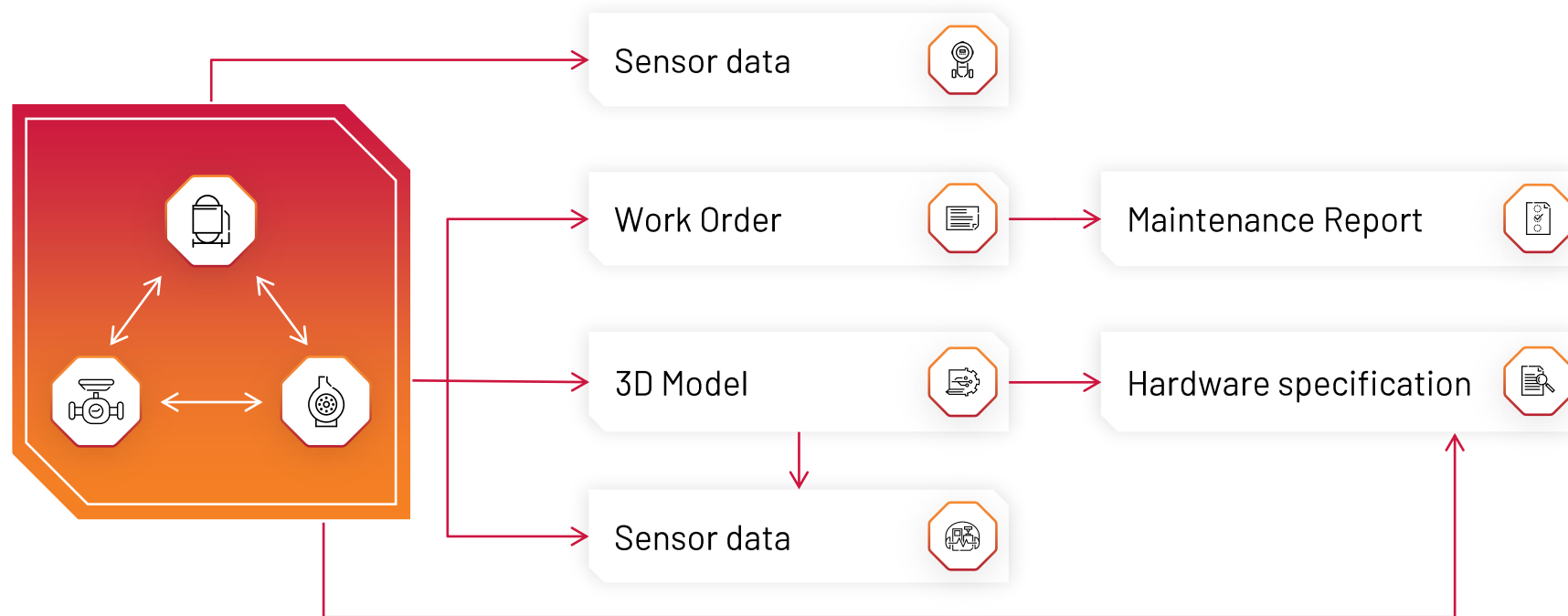
Integrate CAD models or point clouds and version control models



Data Contextualization

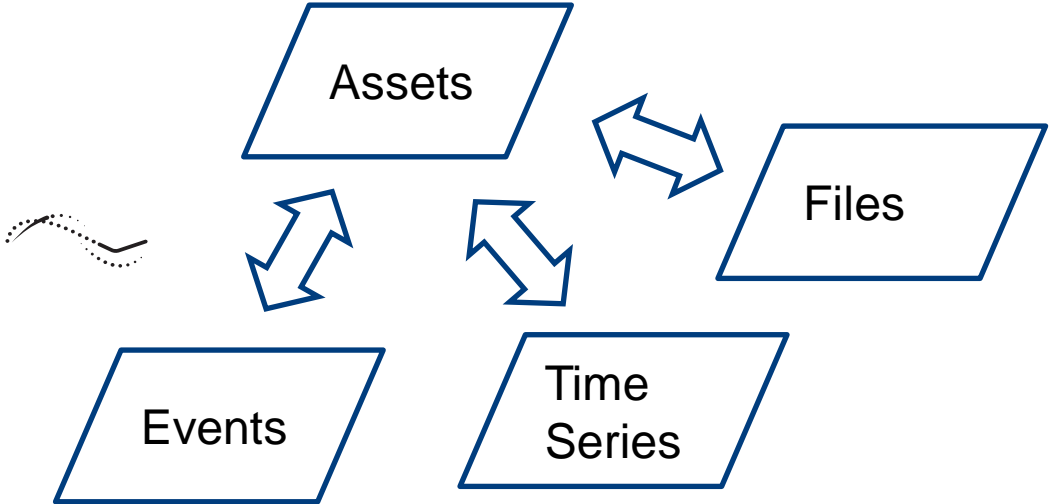
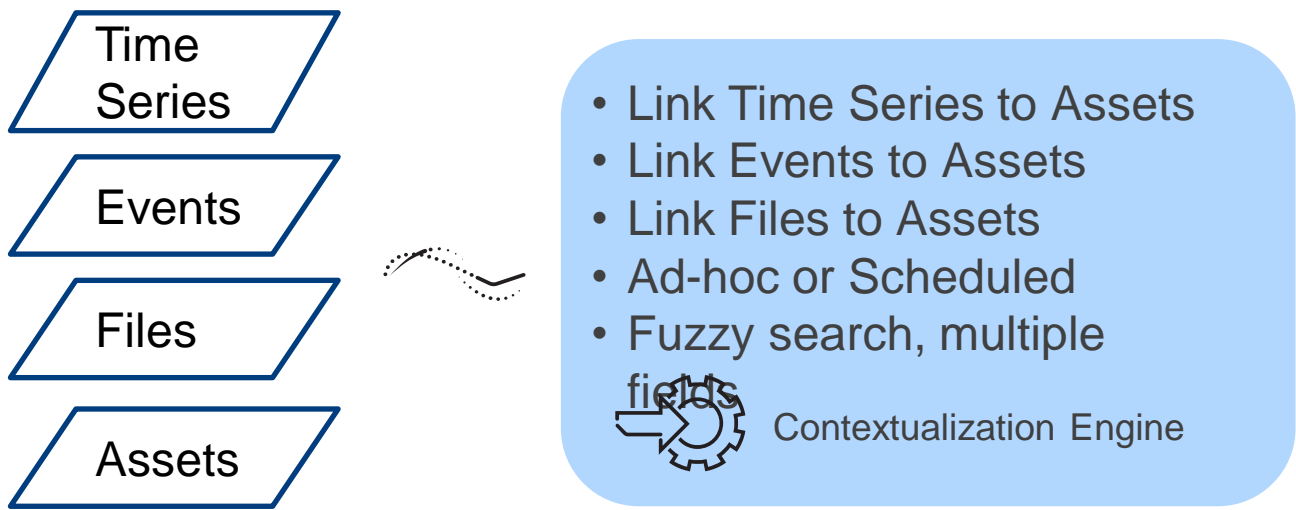


Contextualization is the process of establishing meaningful relationships between data sources and types to traverse and find data through a digital representation of the relationships that exists in the physical world.



Data contextualization simplifies the complex nature of industrial data with meaningful relationships.

Data Contextualization



Example

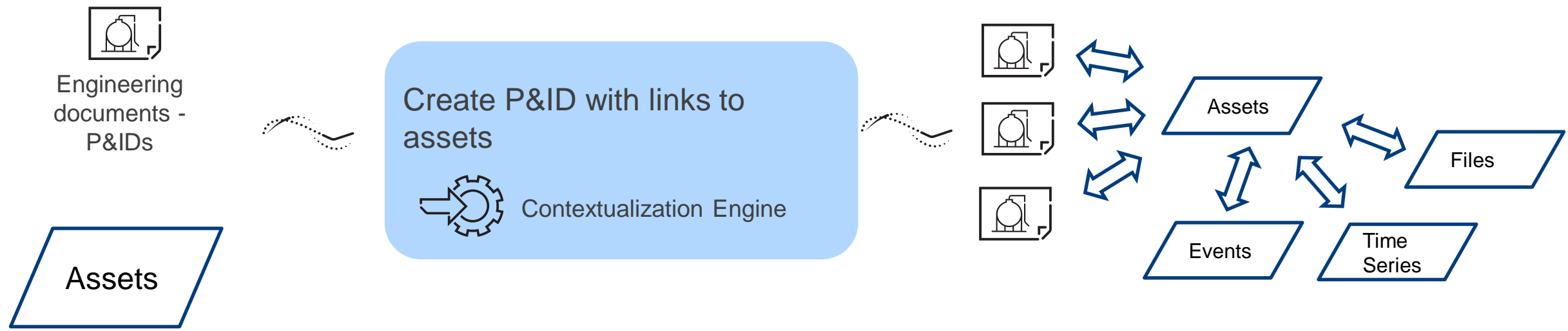
ID	Asset Name
001	Palletizer1
002	Packer2

Description	Start Time
Alarm Line1 Starved Palletizer	2023-02-05 16:16
Packing Product X Line2/Packer	2023-02-05 16:23

Match Events to Assets
Description = AssetName

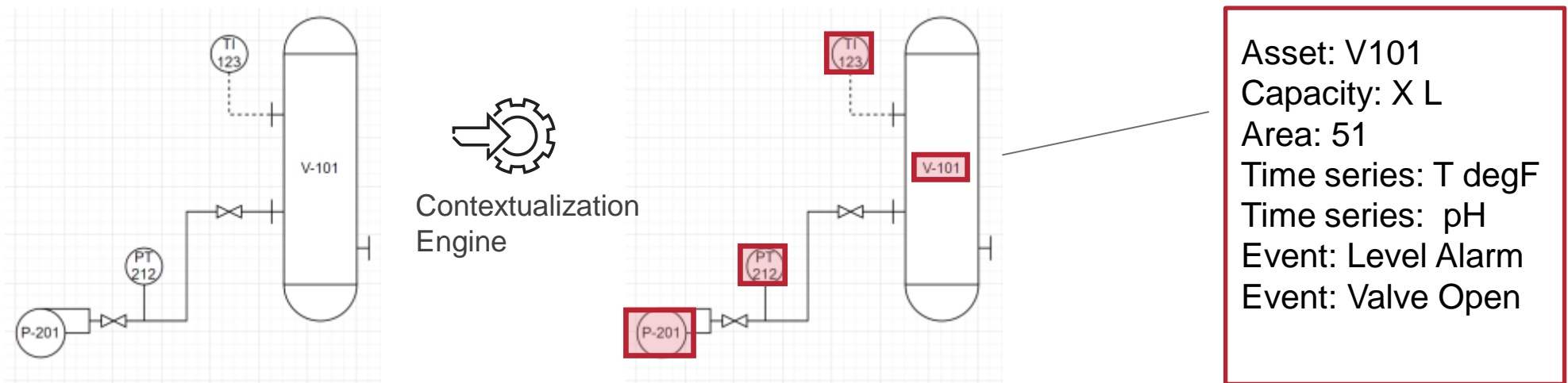
Does This Asset	Match this Event?	Confidence
Palletizer 1	Alarm Line1 Starved Palletizer	70%
Packer2	Packing Product X Line2/Packer	80%

P&ID contextualization

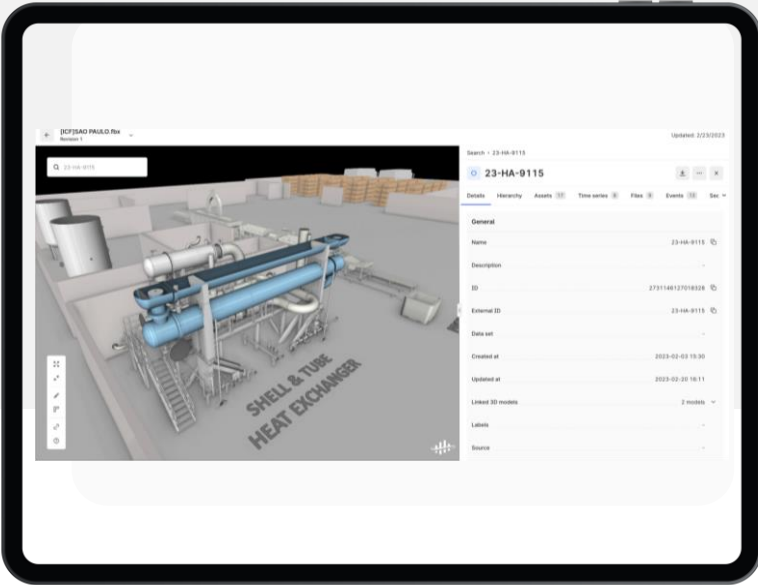
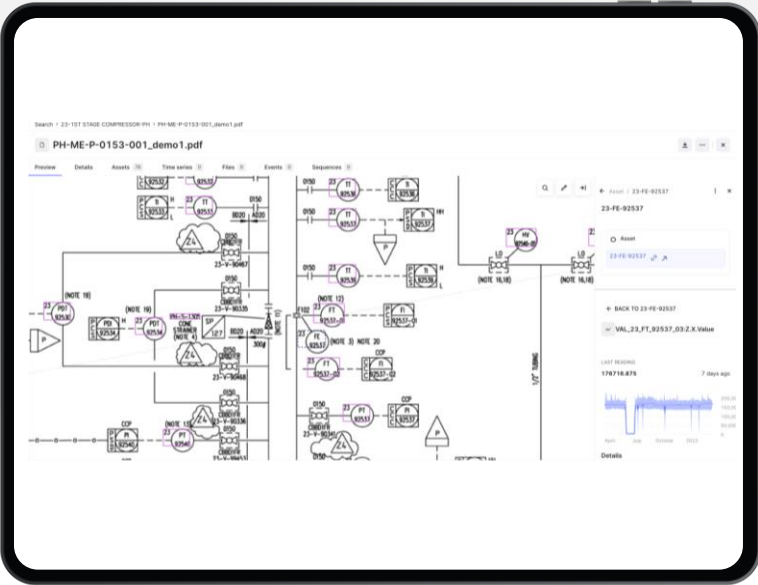
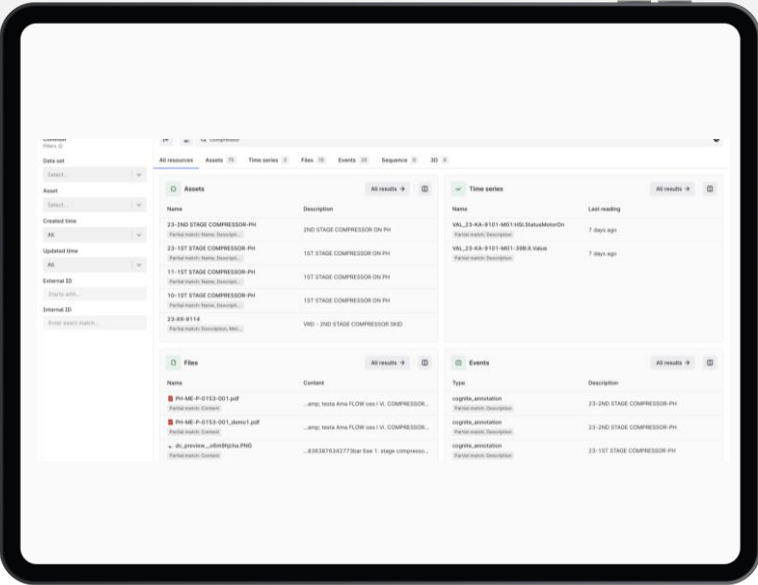


Example

Asset Name
V-101
P-201
PT-212
TI-123



Data Exploration



Find data in seconds,
not hours



Explore all data through a
traditional asset hierarchy and
add additional search context
for enhanced filtering



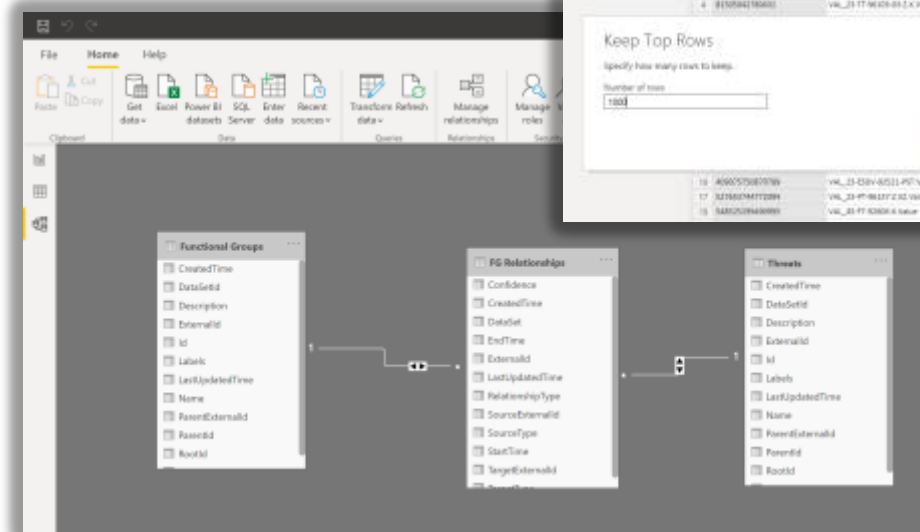
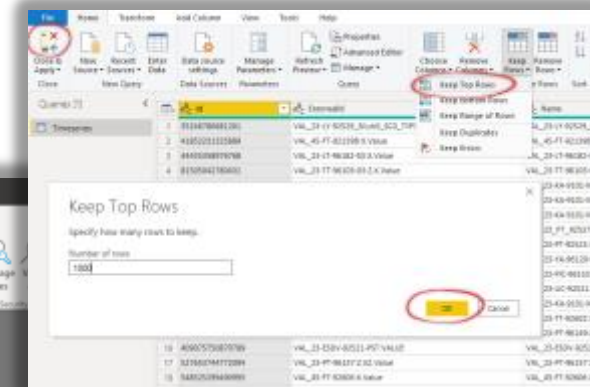
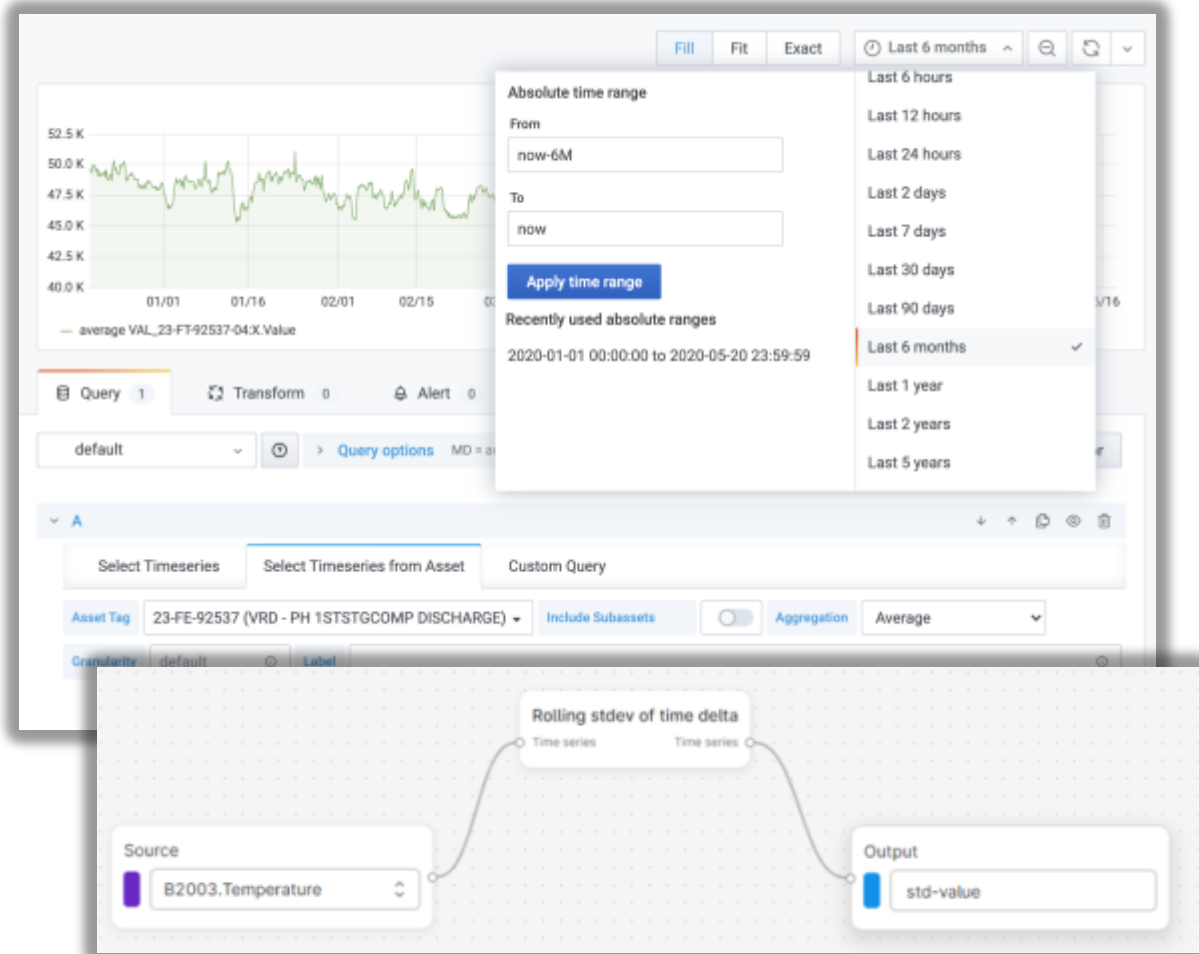
Navigate process diagrams and
other engineering drawings for a
process-oriented view



Use **contextualized 3D models**
to access time series, drawings,
events, files and more through a
unified UI

Data Exploration

Native Charting Tools



Driving Operational Value with FactoryTalk DataMosaix



**Rockwell
Automation**

Make data valuable

Generate the insights that drive action



Conduct ad-hoc domain expert analysis

- No-code analysis of time series and events data with an industrial data analytics library
- Domain experts can share insights and collaborate

Deploy scalable applications

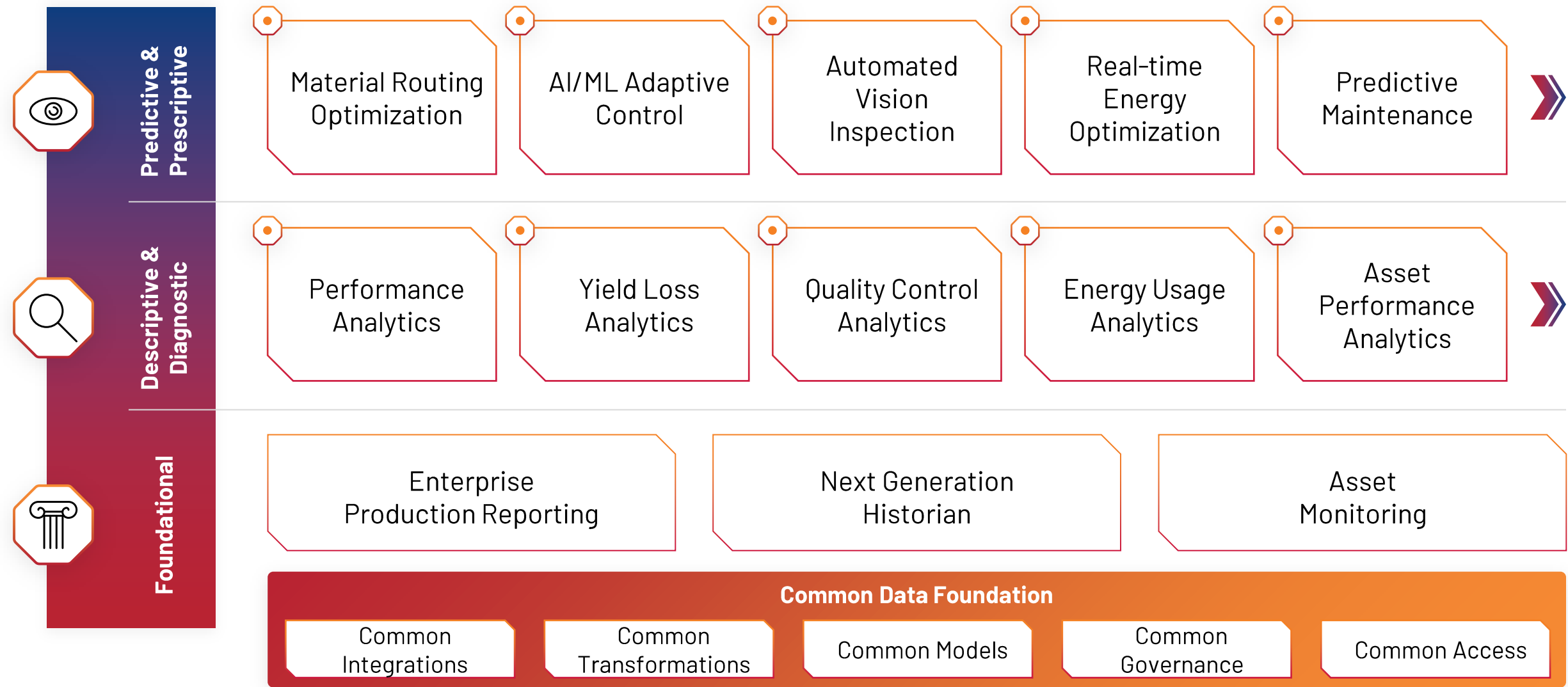
- Pre-built connectors for industry standard visualization tools
- Open APIs and SDKs for application developers
- Rockwell Automation Industry Solutions

Develop advanced analytics

- Standard connectivity to leading data analytics and simulation tools for data scientists
- Develop, run and share code in Jupyter notebooks

Scaling high value applications

Foundational use cases generate rapid value while also providing a scalable data foundation to rapidly develop and deploy visualization and data science applications.




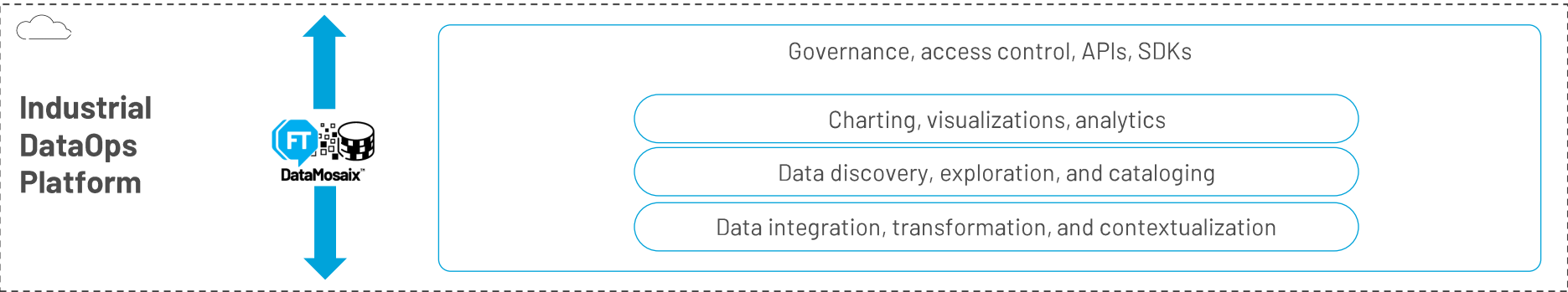
FactoryTalk® DataMosaix™ at center of the solutions strategy

FactoryTalk Hub™




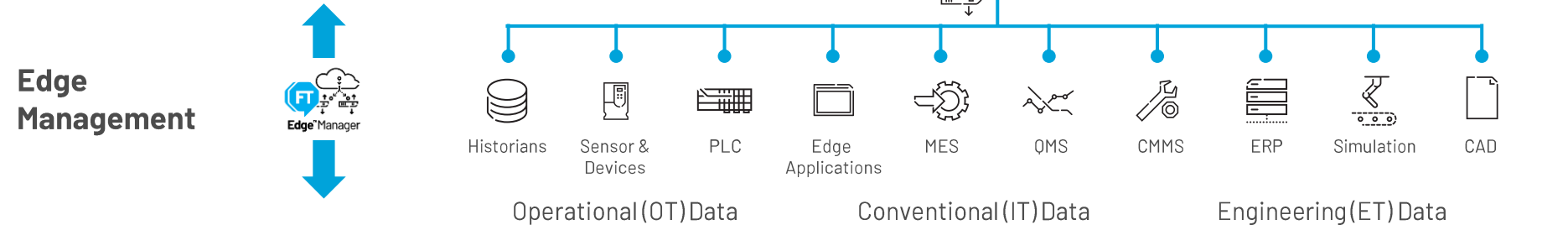
Maximize long-term value and scalability with a common manufacturing data hub.

 Industry-focused, out-of-the-box applications **reduce time to value.**




Accelerate advanced data science capabilities with a single source of trusted and contextualized data.






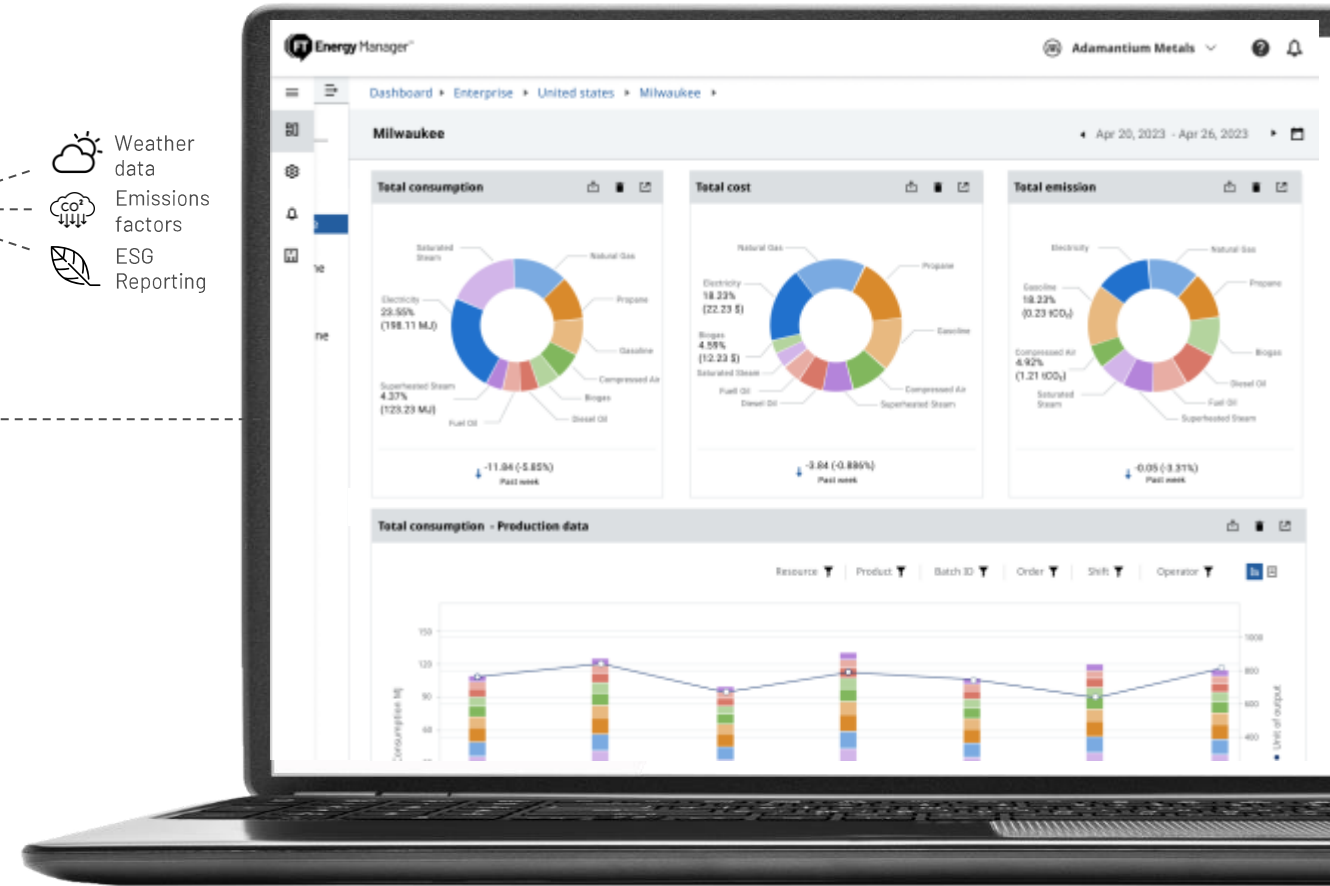
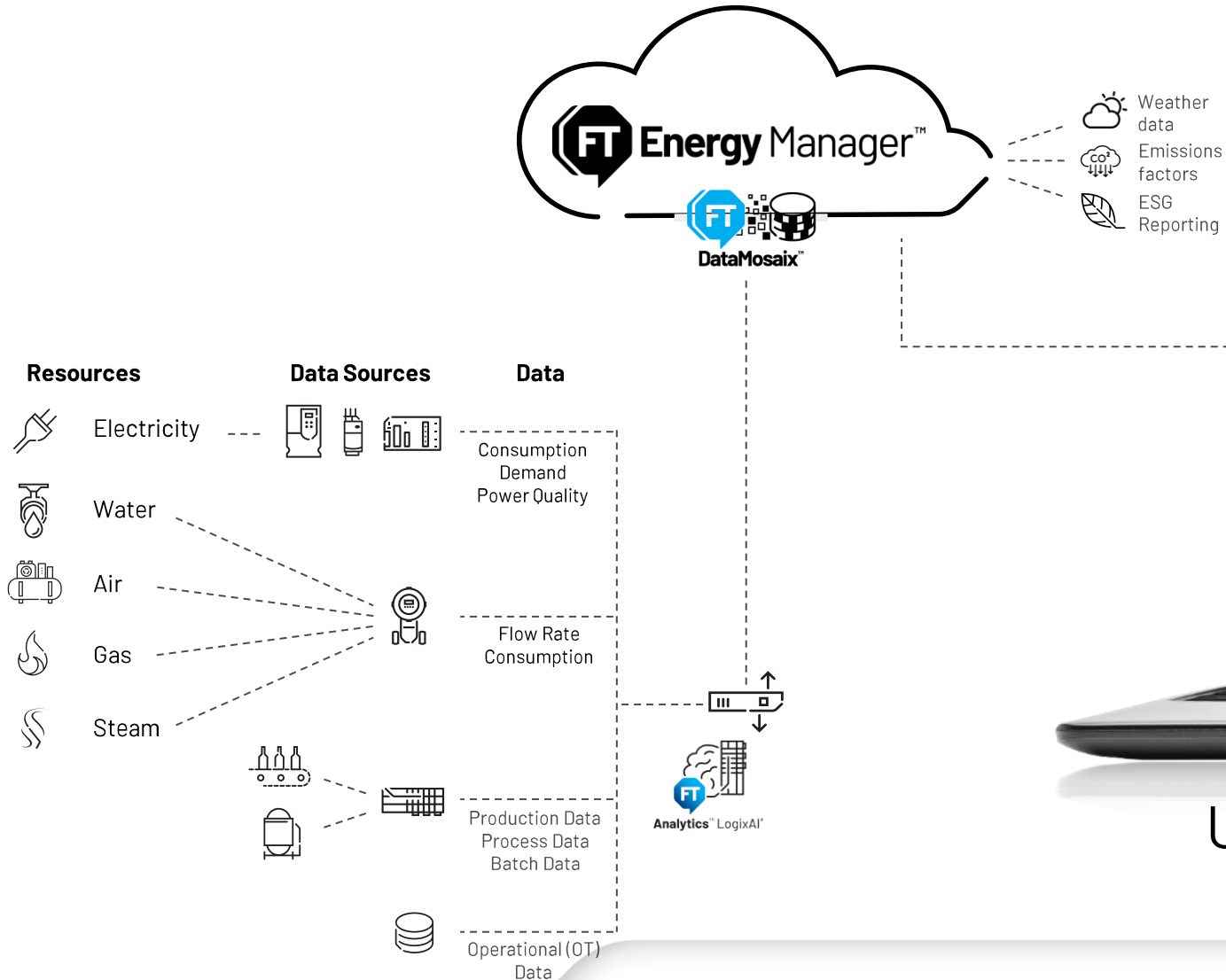
The Industrial DataOps Platform simplifies a converged manufacturing data architecture at a **lower TCO.**



Standard and flexible data extractors connect to existing automation and software systems.

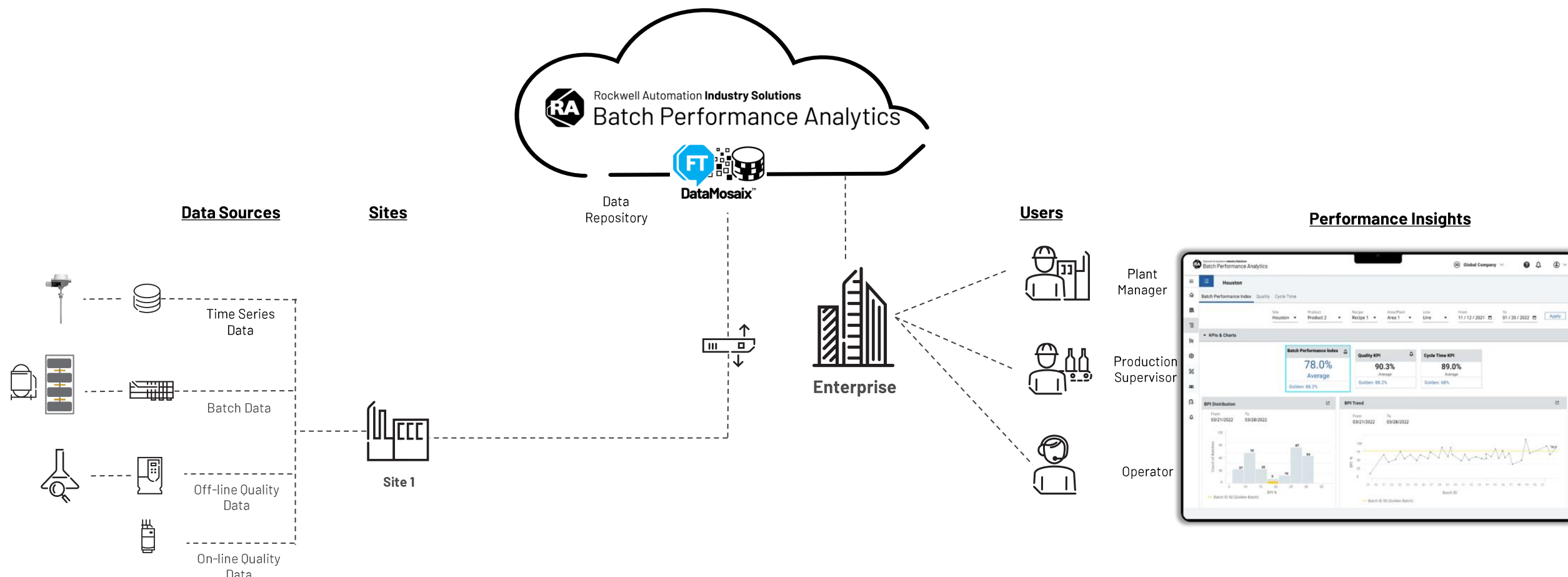


FACTORYTALK® ENERGY MANAGER



Understand & **optimize energy usage**
with contextualized analytics

BATCH PERFORMANCE ANALYTICS



unlock the **golden batch** to improve **quality & yield**

Licensing



**Rockwell
Automation**

FactoryTalk DataMosaix SaaS Subscription Pricing

	Standard	Enterprise
Purchasable Unit	1000 tags	1000 tags
Discounting	5% per break	10% per break
Volume Breaks	5, 10, 25, 40, 70, 100	Standard + Higher Volume
Rockwell Automation Applications	Unlimited	Unlimited
Non-Rockwell Automation Applications	Up to 2 applications	Unlimited
Customer Defined Data Models	Not Included	Unlimited
Assets and Sites	Unlimited	Unlimited
Events*	Unlimited	Unlimited
Files*	Asset-linking only	Fully contextualized
Financial & Structured Data*	Included with Rockwell Automation applications	Unlimited
Extractor and Pipeline Count	Unlimited	Unlimited
API Calls / Day*	Unlimited	Unlimited
Users	Unlimited	Unlimited
Charts (Ad-Hoc data visualization)	Included	Included
Functions	Not Included	Metered (TBD)
2D CAD Files	Not Included	1000 files per 1k tags
3D CAD Files	Not Included	1 TB per 1k tags
Point Clouds	Not Included	Add-On Fee
Images & Vision	Not Included	Add-On Fee

*Monitored for reasonable and customary usage

A tag is defined as time series data. Alarms, events and relational data (e.g., SQL database) do not add to the tag count.

Quantity Discounting

Quantity (1k tags = 1 unit)	Standard	Enterprise
2	2.5%	5.0%
5	5%	10%
10	10%	20%
25	15%	30%
40	20%	40%
70	25%	50%
100	30%	60%

- Pricing is not dependent on the number of sites.
- Work with the Rockwell Automation on enterprise pricing agreements when the tag count is greater than 100,000.

FactoryTalk DataMosaix SaaS Subscription Tier Comparison

	SaaS Standard	SaaS Enterprise
Purchasable Unit	1000 tags	1000 tags
Discounting	5% per volume break	10% per volume break
Volume Breaks	5, 10, 25, 40, 70, 100	Standard + Higher Volume
Rockwell Automation Applications	Unlimited	Unlimited
Non-Rockwell Automation Applications	Up to 2 applications	Unlimited
Customer Defined Data Models	Not Included	Unlimited
Assets and Sites	Unlimited	Unlimited
Events*	Unlimited	Unlimited
Files*	Asset-linking only	Fully contextualized
Financial & Structured Data*	Included with Rockwell Automation applications	Unlimited
Extractor and Pipeline Count	Unlimited	Unlimited
API Calls / Day*	Unlimited	Unlimited
Users	Unlimited	Unlimited
Charts (Ad-Hoc data visualization)	Included	Included
Functions	Not Included	Metered
2D CAD Files	Not Included	1000 files per 1k tags
3D CAD Files	Not Included	1 TB per 1k tags
Point Clouds	Not Included	Add-On Fee
Images & Vision	Not Included	Add-On Fee

3rd party applications that use data from DataMosaix
Examples:

- *PowerBI typically counts as 1 application*
- *Grafana typically counts at 1 application*
- *Each PowerApp typically counts at 1 application*

Data models used by any Rockwell Automation application are included in all tiers. SaaS Enterprise is required to build customer-defined data models that leverage the flexible data modeling capability.

SaaS Standard allows for document storage, with the files linked to the corresponding asset in the Knowledge Graph. SaaS Enterprise provides AI-enabled detection of assets in engineering documents to contextualize data directly on the diagram.

Any data required for Rockwell Automation applications is included in the Standard option. Integrating ERP and enterprise system data that use custom data models requires the Enterprise option.

Functions (i.e., streaming analytics), CAD file contextualization, and vision integration are targeted for customers further along the adoption path and looking to expand value realization.

*Monitored for reasonable and customary usage

Data Collection Frequency and Storage

How fast can time series data be collected?

How long can that data stored in the cloud?

Up to 50 million time-stamped data points can be stored for a single tag.

This provide *flexibility* for different types of manufacturers and their applications.

Time series data refers to a combination of a value and a time stamp, or something that can be trended. The value can be direct from the source or calculated.

Collecting data faster means the data won't be stored for as long.

Examples

Data Collection Frequency	Duration of Storage
1 value / 100 ms	~60 days
1 value / 1 sec	~18 months
1 value / 10 sec	~16 years



Keep it simple!

When determining pricing, assume 1 value per second. Adjust as necessary if the customer requires a higher frequency or longer storage.

Update tag counts as needed

Higher tag counts can be used to accommodate requirements where more than 50 million time-stamped data points are needed for a single tag.

Example:

- **Requirement:** Collect data at a frequency of 1 value / 0.5 sec, but data retention must remain at 18 months
- **Solution:** Double the tag count for pricing

Note: The 50 million time-stamped data points cannot be divided across multiple tags.

FactoryTalk Energy Manager SaaS Licensing

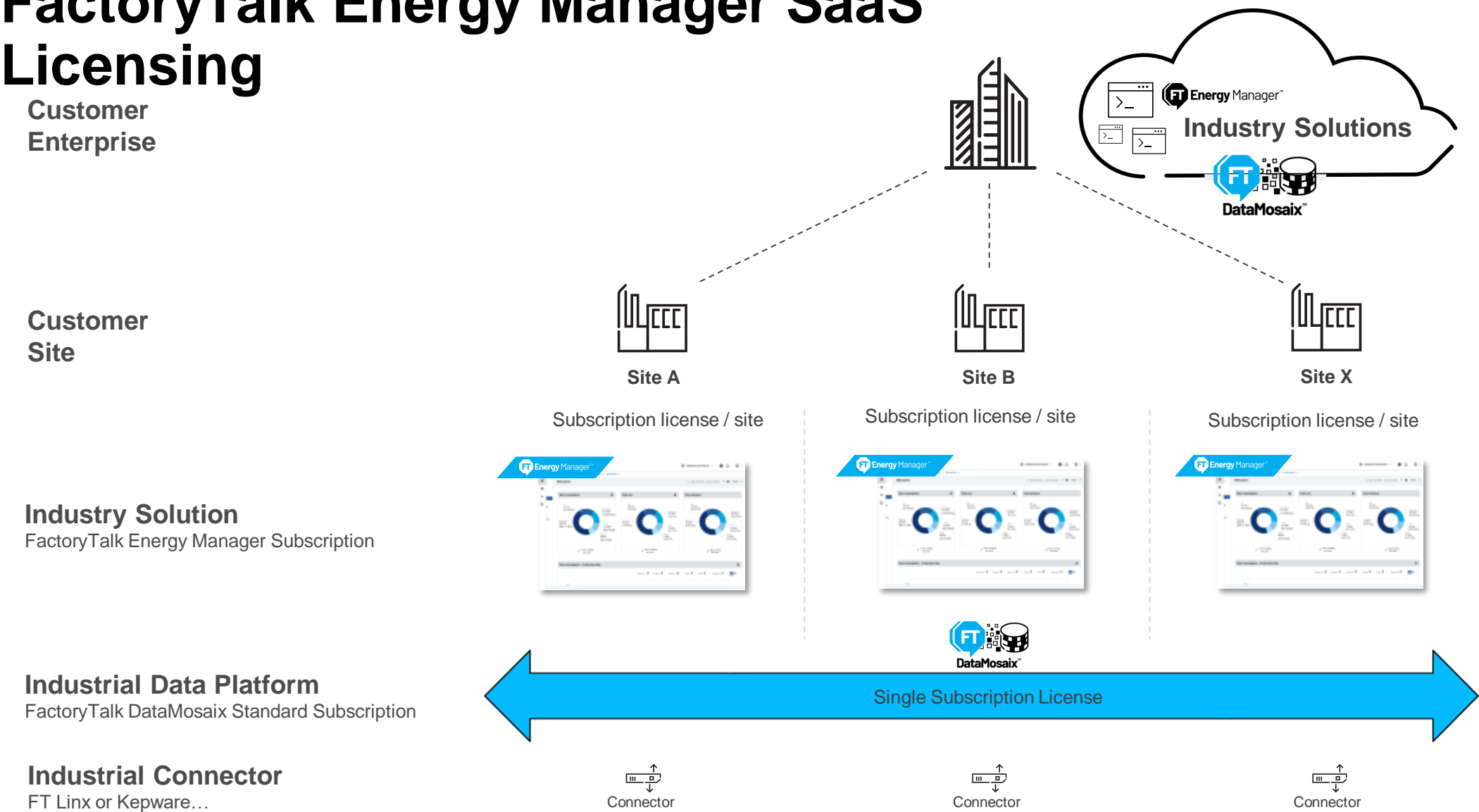
Customer
Enterprise

Customer
Site

Industry Solution
FactoryTalk Energy Manager Subscription

Industrial Data Platform
FactoryTalk DataMosaix Standard Subscription

Industrial Connector
FT Linx or Kepware...



* For current pricing, always
check the [Software Portal](#)

WRAP-UP



**Rockwell
Automation**

FactoryTalk® DataMosaix™ – The Industrial DataOps

Add content for deep dive into the following steps:

- More details about the deployment phases
 - FTDM Main UI / Home Page
 - Connect (Ways to connect – Default Extractors / API and SDKs)
 - <https://developer.cognite.com/>
 - <https://developer.cognite.com/dev/>
 - <https://developer.cognite.com/sdks/>
 - <https://api-docs.cognite.com/20230101/>
 - Staging Area (Raw Data)
 - Transform (Cleaned Data)
 - Contextualize (Data Mapping)
 - Visualize (Default Charts + Data Access for Other Apps)
- Referenced Architecture Diagrams

Learn More, Get in Touch! (Rockwell PTEC content)

Mentoring

- Learn More
 - Visit the [Knowledge Transfer page](#)
 - Visit the [Partner Toolbox page](#)
 - Recordings, Collaterals, Presentations available
- Need access to the above content? Have a Technical Question?
 - Email us at ptec@rockwellautomation.com
- Land or Expand on your Customers
 - Got a lead?
 - Contact your Rockwell Partner Representative
- Share your experiences with us!

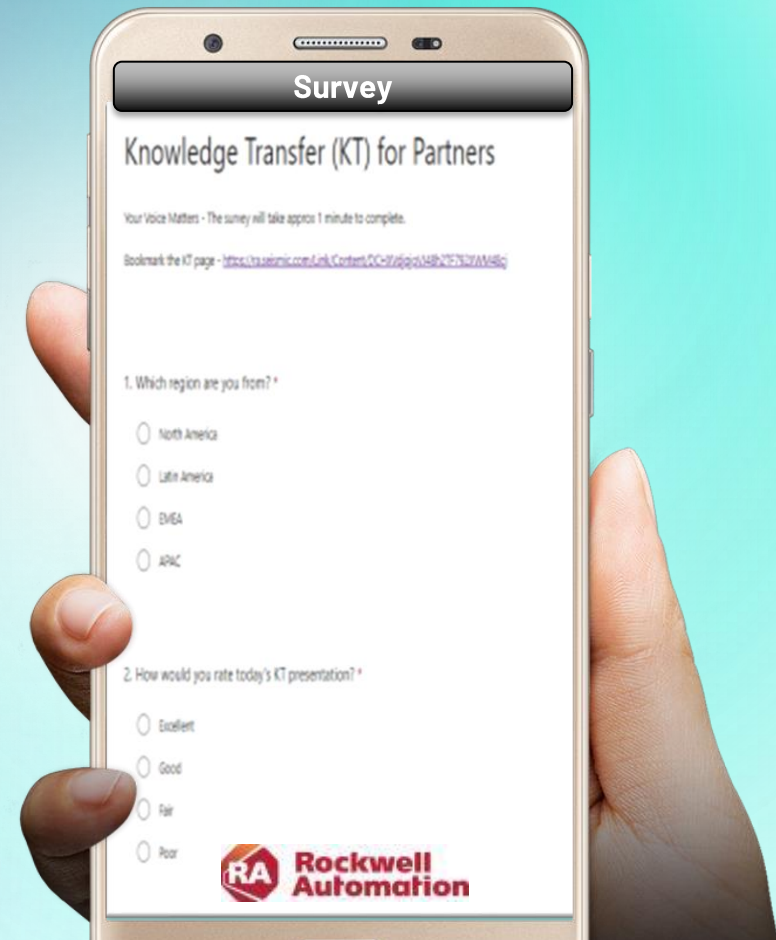


Check out our video tutorials available on our Knowledge Transfer Page

share your feedback

Please complete the **session survey** to allow us to improve the initiative for you

Scan this QR Code or go to the website in the chat window



Thank You



www.rockwellautomation.com



**Rockwell
Automation**

expanding **human possibility**[®]