



expanding human possibility®

FactoryTalk® View 15.00

September 2024



PUBLIC

FactoryTalk® View software version 15.00 feature summary

September 2024

DATA MANAGEMENT & MODERNIZATION	APPLICATION & UI ENHANCEMENTS	SECURITY & PERFORMANCE	OPERATIONAL EFFICIENCY	MOBILITY (VIEWPOINT)
<ul style="list-style-type: none">• Support External InfluxDB™ and InfluxDB™ Cloud Serverless• New DataLogPro Features<ul style="list-style-type: none">▪ DataLogPro database connection state▪ On/Off control via the context menu▪ Migrate existing DataLog model history into InfluxDB• MQTT Support	<ul style="list-style-type: none">• Application Library Imports• Runtime Navigation Menu – Support Multiple Navigation Menus• ThinManager® Logix PinPoint Configuration via GUI• Global Object Displays Organized In Folders• FactoryTalk® View Studio Enhancement<ul style="list-style-type: none">▪ Collapse/Expand All▪ Close All Tabs	<ul style="list-style-type: none">• Customize HMI Project Folder Path• Runtime Security Enhancement• Performance Enhancement	<ul style="list-style-type: none">• Add Component Tool Enhancements• Restore SE Archive File via Command Line• FactoryTalk® Alarms and Events Email Notification• Default settings for TrendPro or XY Plot	<ul style="list-style-type: none">• Web Clients Support for:<ul style="list-style-type: none">▪ DataLogPro with InfluxDB™<ul style="list-style-type: none">➤ Datagrid➤ TrendPro▪ Apache EChart Widgets on Web Clients▪ Multiple Navigation Menus▪ PlantPAX® Library of Process Objects<ul style="list-style-type: none">➤ Built-in Security Functions➤ Built-in Alarm and Event Functions

DATA MANAGEMENT & MODERNIZATION



Support External InfluxDB™ and InfluxDB™ Cloud Serverless

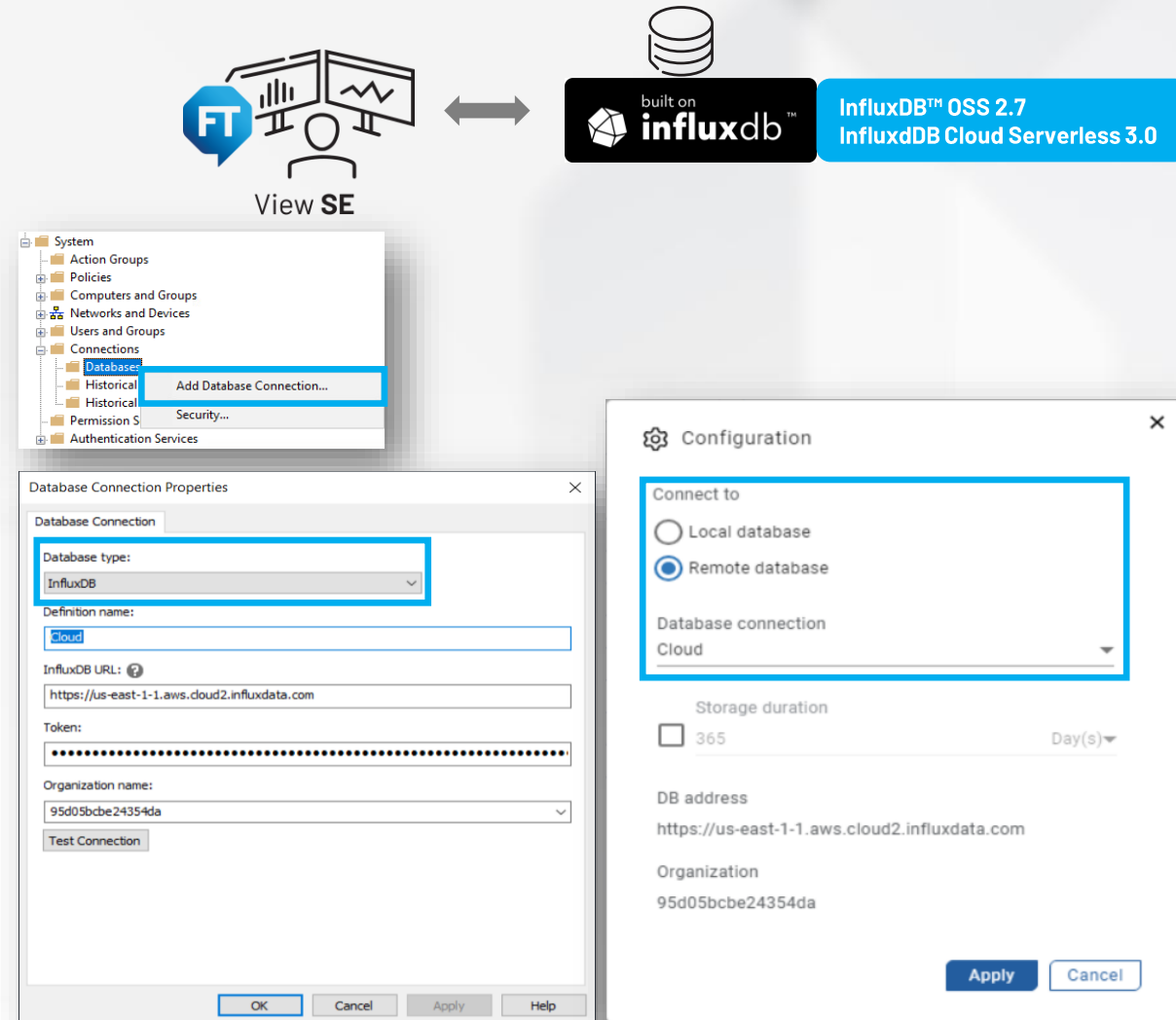
FactoryTalk® View Site Edition v.15.00

Feature:

DataLogPro enhances historical data storage by supporting external InfluxDB™ and InfluxDB™ Cloud Serverless. It features fallback to built-in InfluxDB during external disconnects and maintains data continuity in redundant setups.

Benefits:

- **User Configuration Enhancement:** Simplifies setup with a dedicated InfluxDB™ option in database connection settings.
- **Advanced Data Management:** Uses InfluxDB™ Cloud Serverless (3.0) to maximize performance and reliability, minimizing the need for server management.
- **Robust External Database Redundancy:** Delivers data integrity by syncing small data segments with external InfluxDB™ during transitions and automating backups during disconnections to help prevent data loss.



New DataLogPro Features

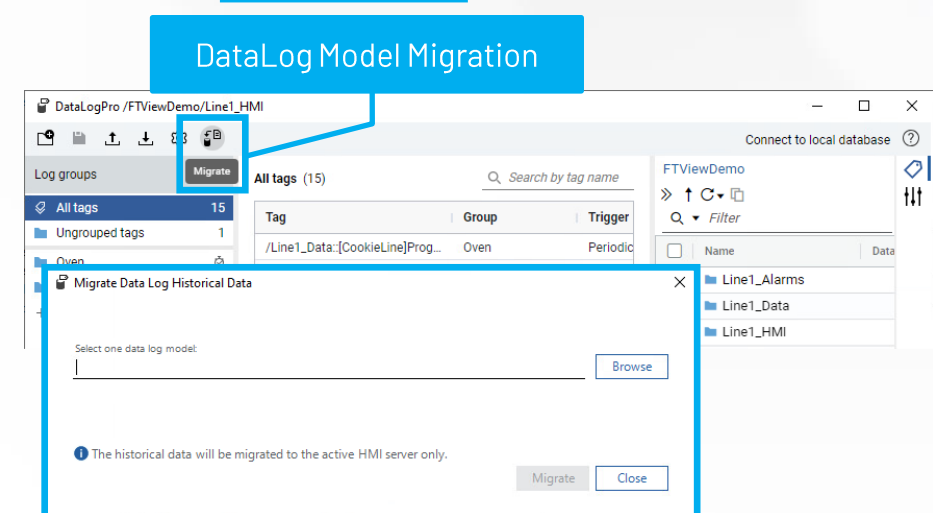
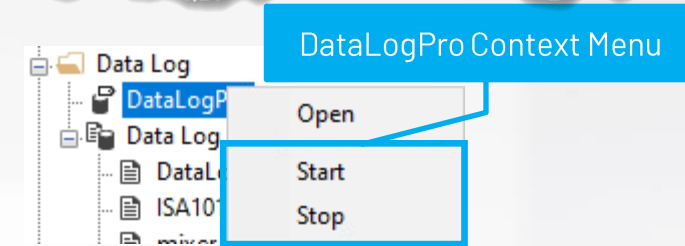
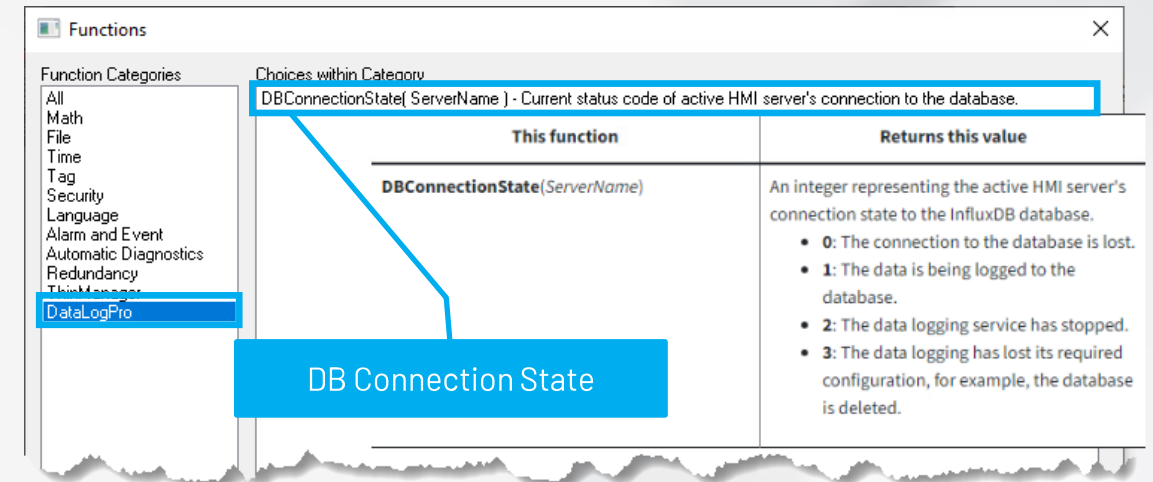
FactoryTalk® View Site Edition v.15.00

Feature:

DataLogPro enhancements now feature real-time database connection status monitoring, operational control via context menu, seamless migration of historical data stored in data logs model file sets to InfluxDB, and customizable locations for data

Benefits:

- **Enhanced Monitoring:** Provides critical real-time feedback on the DataLogPro database connection status, enabling prompt identification and resolution of connectivity issues.
- **Operational Control:** Enhances DataLogPro operational On/Off control directly from the context menu.
- **Streamlined Migration \ Backfilling Process:** This feature enables the migration and backfilling of historical data from legacy DataLog models to modern InfluxDB databases, delivering data consistency and optimal performance.
- **Customizable Storage:** Allows flexibility in specifying storage locations for historical data, improving data organization and accessibility.



MQTT Support

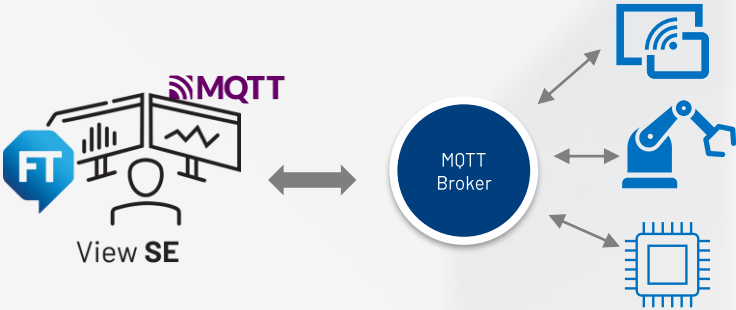
FactoryTalk® View Site Edition v.15.00

Feature:

Integrates MQTT libraries into VBA, enabling MQTT client creation that supports publisher and subscriber roles. Compatible with MQTT versions 5.0 and 3.1, including TCP and WebSocket protocols with TLS options.

Benefits:

- **Expanded Protocol Support:** Enables MQTT integration, a critical Internet of Things (IoT) messaging protocol, facilitating direct communication with IoT devices and cloud platforms.
- **Customization and Flexibility:** Offers adaptable MQTT property configuration, enhancing operational efficiency and IoT system integration.
- **Ease of Configuration:** Includes an MQTT display library with example code, simplifying the implementation process and providing a practical, real-world application guide.



VBA objects

Members of 'MQTTClient'

- ApplicationMessage
- Connect
- Connected
- Disconnect
- Disconnected
- Ping
- Publish
- Subscribe
- Unsubscribe

Members of 'MQTTFactory'

- CreateApplicationMessage
- CreateClient
- CreateConnectOption
- CreateSubscribeOption
- CreateUnsubscribeOption
- CreateUserProperty

Members of 'MQTTMessage'

- AddUserProperty
- ContentType
- Correlation
- MessageExpiryInterval
- Payload
- PayloadAsText
- PayloadFormat
- QoS
- ResponseTopic
- Retain
- SubscriptionIdentifiers
- Topic
- UserProperties

APPLICATION & UI ENHANCEMENTS



Versatile Application Library Import Capabilities

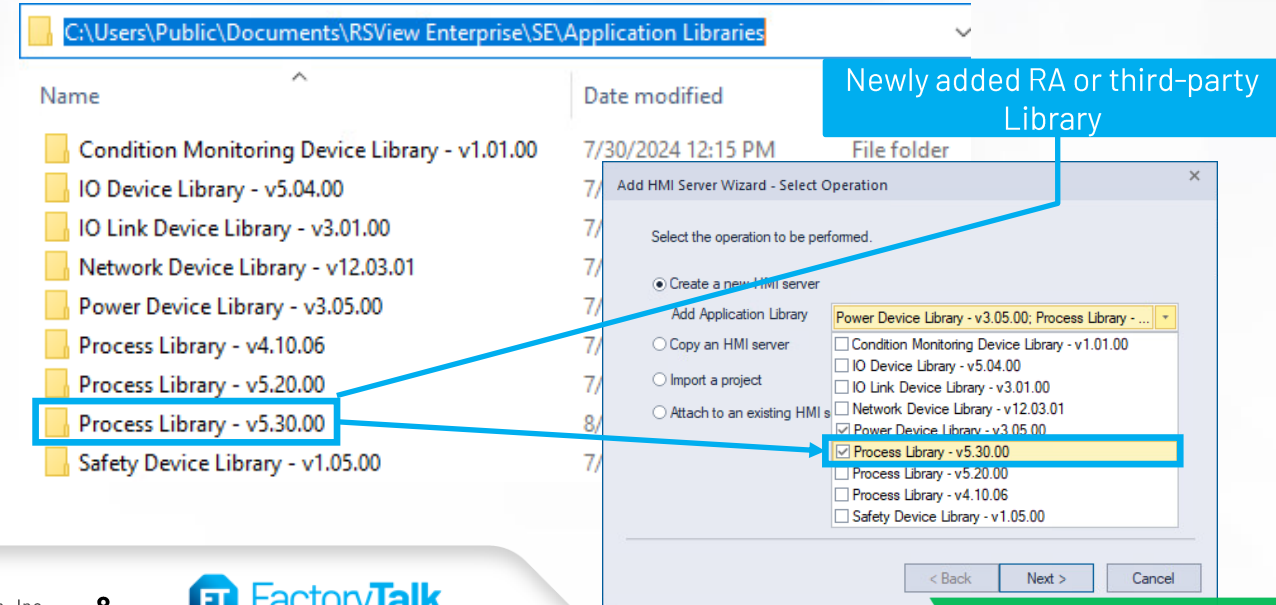
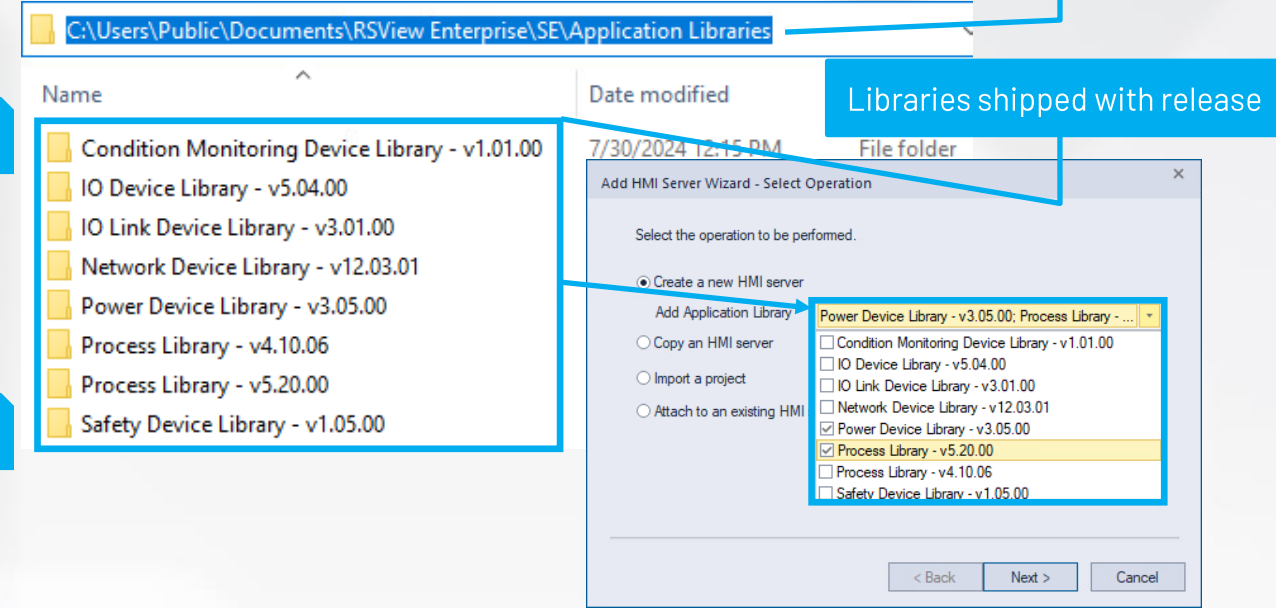
FactoryTalk® View Site Edition v.15.00

Feature:

This feature enables the import of multiple application libraries, including different versions of the PlantPax® Library of Process Objects and Device Objects Libraries. This feature is available during both new HMI server setups and updates to existing servers.

Benefits:

- **Integrated Library Support:** Provides immediate access to the latest Device and Process libraries upon release, streamlining system setups.
- **Efficient Library Import:** Supports simultaneous imports of multiple library versions during server setups, reducing manual efforts.
- **Automated Library Updates:** Dynamically updates the import wizard to include new and third-party libraries that adhere to the required structure, enhancing future compatibility and extending system functionality.



Runtime Navigation Menu – Support Multiple Navigation Menus

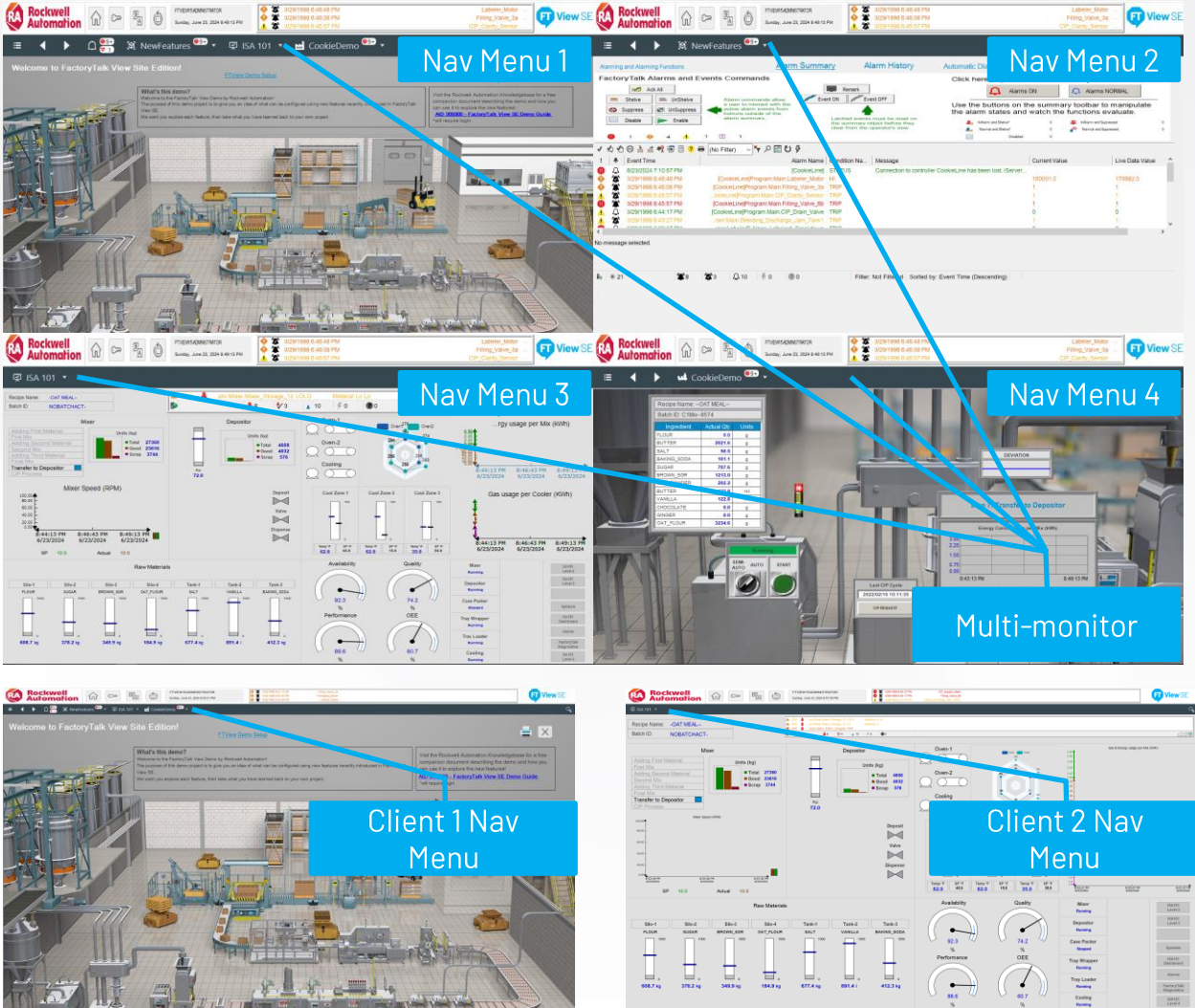
FactoryTalk® View Site Edition v.15.00 and FactoryTalk® ViewPoint v.15.00 for Site Edition

Feature:

Now supports the creation and management of multiple navigation menus. This feature allows for the configuration of distinct menus during design, which can then be displayed across multiple runtime clients or monitors, each tailored to specific operational needs and roles.

Benefits:

- **Increased Operational Efficiency:** Operators can quickly access the most relevant controls and information tailored to their specific role or task.
- **Enhanced Situational Awareness:** Customized menus and highlighted search results help operators monitor and respond to operational needs more effectively.
- **Scalability and Flexibility:** Supports multiple monitors or clients, facilitating a versatile setup adaptable to various operational needs.
- **Improved User Experience:** Consistent menu appearance with optional controls, efficient search within menus, and auto-collapsing search panels reduce screen clutter and focus user interaction.



ThinManager® Logix PinPoint Configuration via GUI

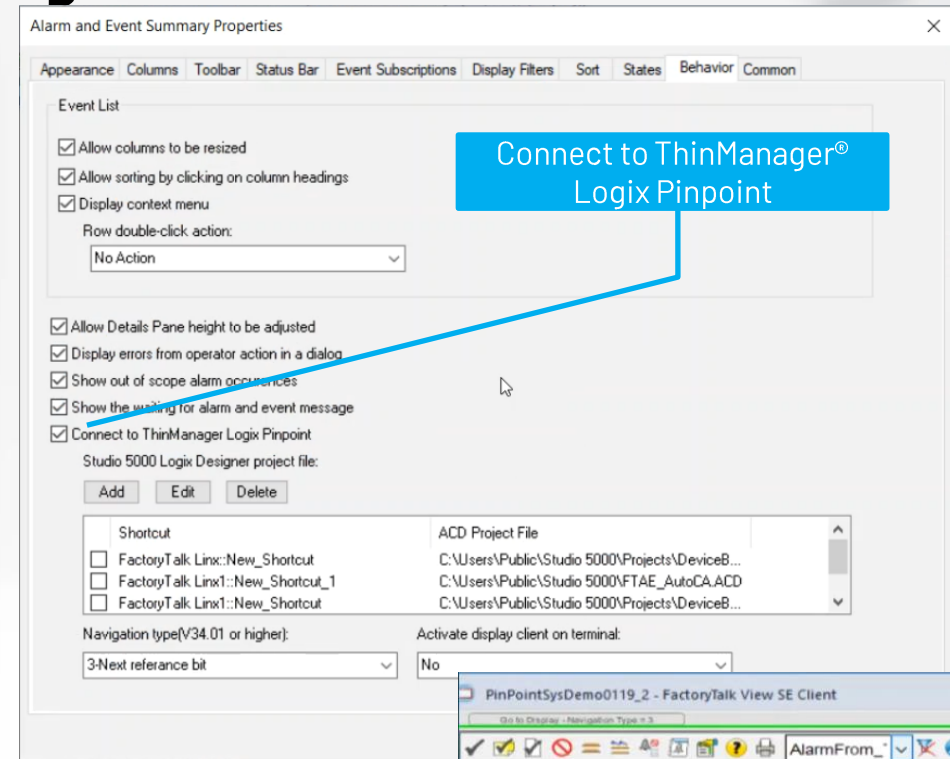
FactoryTalk® View Site Edition v.15.00

Feature:

Introducing a graphical user interface (GUI) for configuring ThinManager® Logix PinPoint in FactoryTalk® View SE, allowing users to connect to ThinManager® Logix Pinpoint directly from the Alarm and Event Summary toolbar or context menu. This GUI configuration provides options to add, edit, and delete Studio 5000 Logix Designer® project files and configure navigation types and

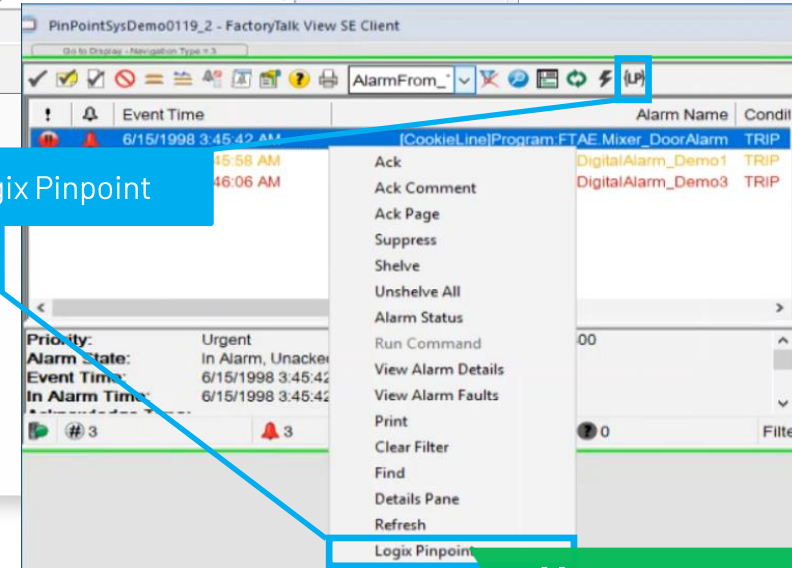
Benefits:

- **Ease of Configuration:** Simplifies the setup process by using a GUI instead of VBA scripting, making it more accessible to users with limited programming skills.
- **Error Reduction:** Minimizes the potential for errors associated with manual coding, leading to more reliable operations.
- **Time Efficiency:** Speeds up the configuration process, allowing faster deployment and troubleshooting of automation projects.
- **Enhanced Troubleshooting:** Enables the direct launching of Logix Pinpoint from the context menu in the Alarm and Events summary. Provides the quick navigation to the source of alerts or problems in Logix code.



Connect to ThinManager®
Logix Pinpoint

Launch Logix Pinpoint



Global Object Displays Organized In Folders

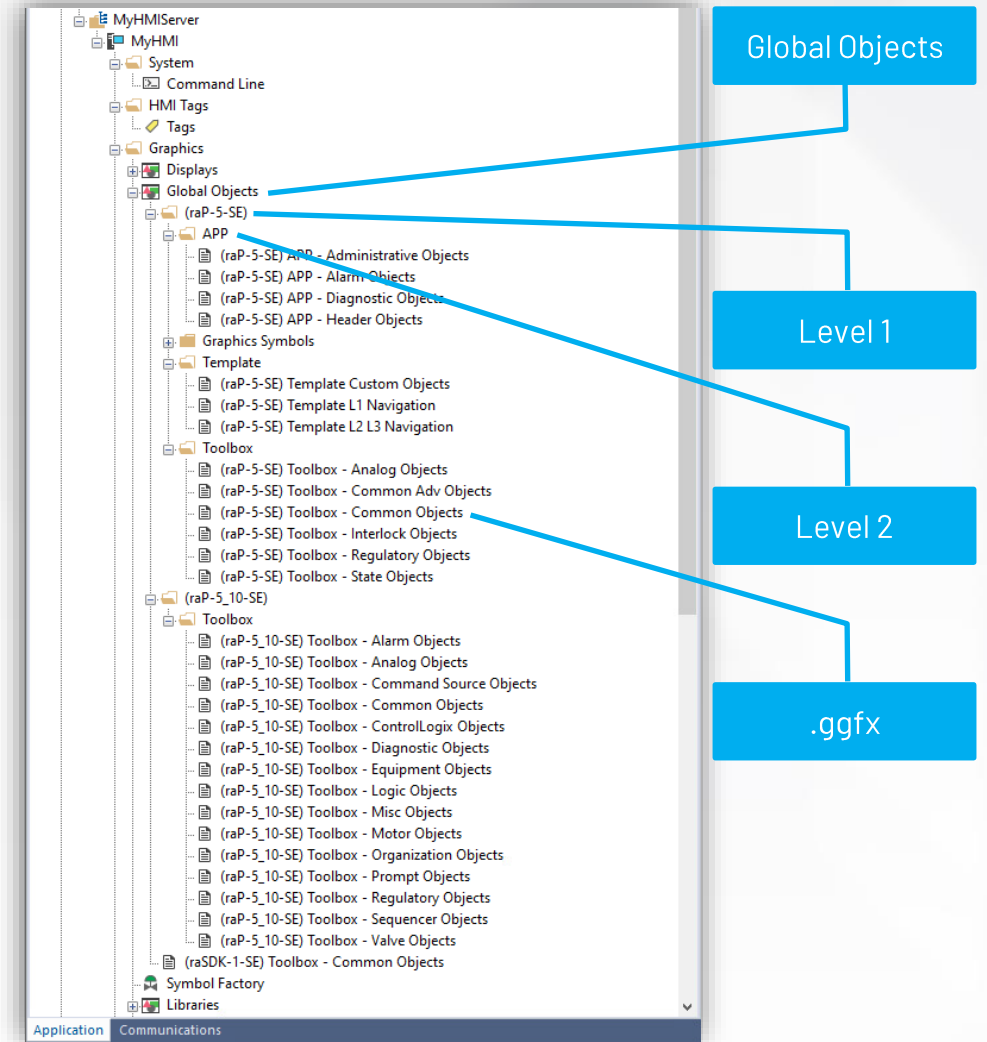
FactoryTalk® View Site Edition and FactoryTalk® View Machine Edition v.15.00

Feature:

Organizes Global Graphic Display Components (.ggfx) into hierarchical folders for streamlined management.

Benefits:

- **Logical Organization:** Implements a logical folder structure for global components, leading to a cleaner and more manageable file system.
- **Hierarchical Structure:** Facilitates a two-level hierarchy, enabling efficient organization and navigation.
- **Reference Integrity:** Maintains reference integrity of global objects during relocations within the folder hierarchy, minimizing errors.
- **Enhanced Object Management:** Allows multi-selection of global objects using Ctrl or Shift keys, facilitating efficient management operations.
- **Cross-Environment Interaction:** Facilitates drag-and-drop capabilities between different FactoryTalk® View Studio instances and between FactoryTalk® View Studio and Windows Explorer, enhancing user efficiency.



FactoryTalk® View Studio Enhancement

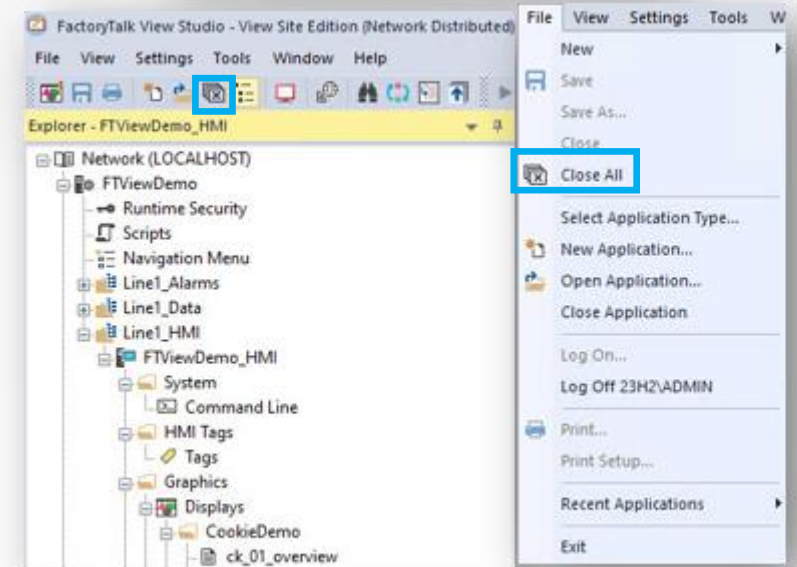
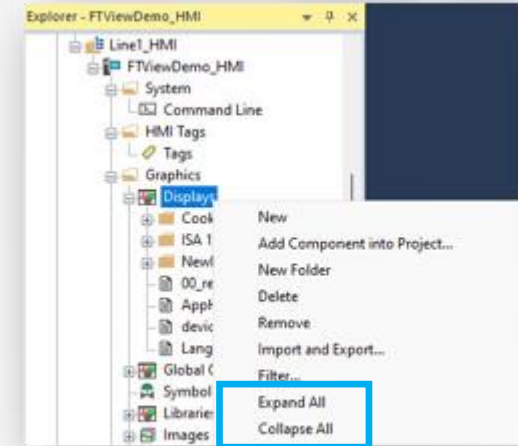
FactoryTalk® View Site Edition and FactoryTalk® View Machine Edition v.15.00

Feature:

FactoryTalk® View now includes a Collapse/Expand All option that allows users to toggle the visibility of all folders under Displays and Global Objects in the Explorer window. Additionally, a Close All Tabs feature enables users to close all windows simultaneously, streamlining workspace management.

Benefits:

- **Improved Navigation and Control:** The ability to collapse or expand all sections and close all tabs quickly allows users to manage their workspace more effectively, resulting in an organized and efficient environment.
- **Enhanced Workspace Management:** Closing all tabs with one click reduces visual clutter and aids in focusing on essential tasks, promoting a smoother workflow.



SECURITY & PERFORMANCE



Customize HMI Project Folder Path

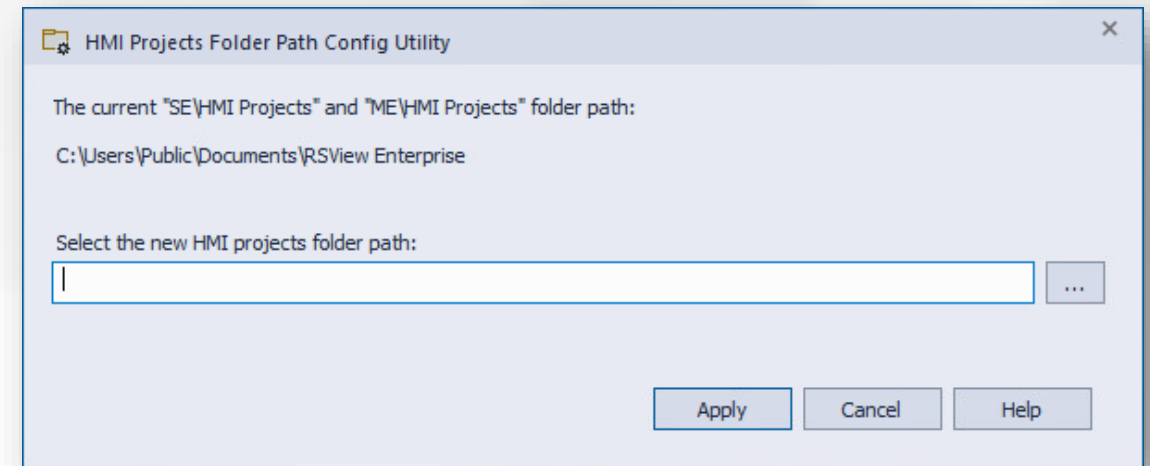
FactoryTalk® View Site Edition and FactoryTalk® View Machine Edition v.15.00

Feature:

The HMI Projects Folder Path Config Utility introduces the capability for users, particularly administrators, to specify new folder locations for SE and ME HMI projects.

Benefits:

- **Enhanced Security:** Delivers that access to HMI project folders is limited to authorized personnel only, to help protect sensitive project data.
- **Improved Organization:** Enables the storage of HMI projects in custom locations, fostering better management and organization.
- **Increased Flexibility:** Supports flexible deployment of HMI projects through unattended installation options.
- **User Control:** Helps to empower users, especially administrators, with the authority to manage and modify access rights to new folder locations effectively.



```
Usage:
Setup.exe /[option]={value} /[option]={value} ...

HMIFolder      Optional. Specifies the folder to store the HMI projects.
```

Runtime Security Enhancement

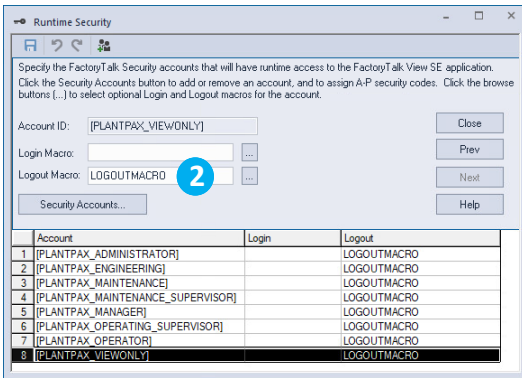
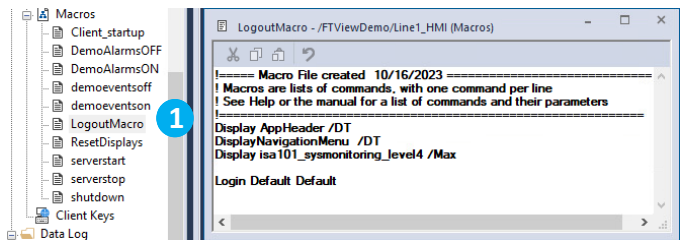
FactoryTalk® View Site Edition v.15.00

Feature:

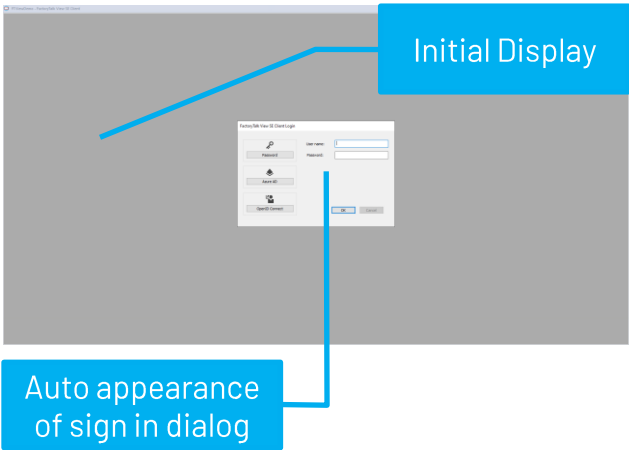
Automatically navigate the SE Client to a specific display on sign out, with an option to suppress the sign in dialog, enabling read-only navigation.

Benefits:

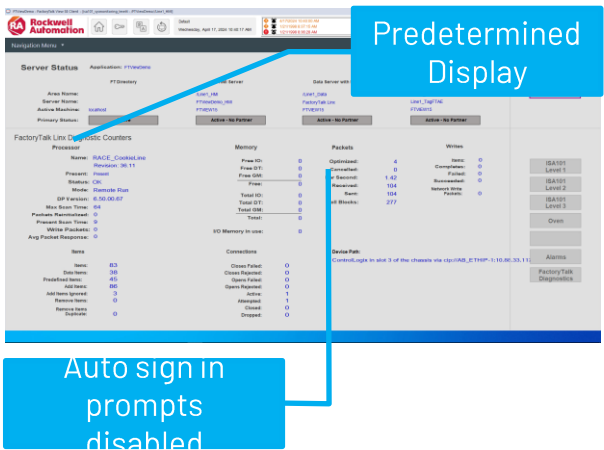
- Consistent User Experience:** Delivers consistent and predictable screen navigation to a designated read-only display on sign out, enhancing system security and user understanding.
- Enhanced System Control:** Allows administrators to configure default user sign in behaviors in the sign out macro, help to help prevent the closure of all displays and return to the initial display.
- Reduced User Disruption:** Helps prevent the automatic appearance of the sign in dialog on the SE client, reducing interruptions and maintaining operational continuity.
- Customizable Sign Out Triggers:** Configurable sign out macro settings to specify actions after sign out, such as automatic relogin with a default user. Helps to deliver transitions and display continuity.



V14 and below



V15



PUBLIC

Enhanced

Performance Enhancement

FactoryTalk® View Site Edition v.15.00

Feature:

- Launch SE Project from Studio and Client: Speed improvement of 30% to 40%.
- Enhanced Legacy Application Migration Speed: Achieves a 50% improvement.

Benefits:

- **Increased Operational Efficiency:** Faster project launches, and efficient migration processes minimize downtime and improve overall productivity.
- **Enhanced User Experience:** Users benefit from smoother transitions and reduced waiting times, enhancing satisfaction and engagement.



*Results can vary slightly depending on the project content, and environments.

Performance Enhancement

FactoryTalk® View Machine Edition v.15.00

Feature:

- MER Creation Speed Boost: 25% - 60% faster for creating MER files across versions.
- Test Application Speed Improvement: 40% - 70% faster testing speeds.

Benefits:

- **Enhanced Performance:** As projects grow in complexity with more images and graphics, the performance improvements deliver that the application remains responsive and reliable.
- **Faster Development Workflows:** Enhanced performance with faster MER generation and test applications lead to quicker iterations and smoother development workflows.
- **Improved User Experience:** Significant speed enhancements in MER creation, test applications, and legacy application migrations deliver a more efficient and streamlined development process.



*Results may vary slightly depending on the project content, and environments.

**OPERATIONAL
EFFICIENCY**



Add Component Tool Enhancements

FactoryTalk® View Site Edition and FactoryTalk® View Machine Edition v.15.00

Feature:

The Add Component Tool now extends its proven functionalities from FactoryTalk® View SE to the ME version, delivering uniform functionality and interoperability across both platforms. Additionally, it facilitates the organization of displays and global objects within specific folder locations, enhancing management and accessibility in both the SE and ME versions.

Benefits:

- **Unified Platform Functionality:** Provides a consistent user experience across platforms, simplifying training and support.
- **Enhanced Efficiency and Error Reduction:** Streamlines processes by automating the addition and organization of components, significantly reducing manual effort and decreasing the likelihood of errors.
- **Customization and Dynamic Updates:** Offers robust configuration options and an override feature, enabling dynamic updates and precise project organization.
- **Enhanced Log File Management:** Streamlines troubleshooting and enhances operational transparency through automated log file creation and integration.

SEAddComponent.exe ApplicationName ApplicationType Area or Root/
"Component and file location"

Add Components into Application Syntax Example:

SEAddComponent.exe ADT ME / "C:\Demo\Demo.xml"

Demo.xml:

```
1 <hmi>
2   <category type="Graphics;Displays" folder="C:\Demo">
3     <component file="Pumps.gif" folder="Folder1"/>
4     <component file="Sensors.gif" folder="Folder1\SubFolder1"/>
5     <component file="Bottles.xml" folder="Folder2"/>
6   </category>
7   <category type="Graphics;Global Objects" folder="C:\Demo">
8     <component file="Logix_PIDE.ggfx"/>
9   </category>
10  <category type="Graphics;Images" folder="C:\Demo">
11    <component file="ack.bmp"/>
12    <component file="alarms.bmp"/>
13  </category>
14  <category type="InfoMessages;Tables" folder="C:\Demo">
15    <component file="Demo.ifm"/>
16  </category>
17  <category type="MessageServer;Tables" folder="C:\Demo">
18    <component file="Demo.loc"/>
19  </category>
20  <category type="Macro;Files" folder="C:\Demo">
21    <component file="ClearRemoteDisplayNumber.mcr"/>
22  </category>
23  <category type="Parameter;Files" folder="C:\Demo">
24    <component file="Tank1.par"/>
25    <component file="Tank2.par"/>
26  </category>
27  <category type="RecipePlus;Editor" folder="C:\Demo">
28    <component file="Soda Recipe.rpp"/>
29  </category>
30  <category type="Data Logging;Models" folder="C:\Demo">
31    <component file="Product Counts.mdf"/>
32  </category>
33 </hmi>
```

Restore SE Archive File via Command Line

FactoryTalk® View Site Edition v.15.00

Feature:

Enables application restoration via command line using the 'Distributed Application Manager.exe' with various parameters and a JSON configuration file.

Benefits:

- **Automation of Restoration Processes:** Utilizes command line and JSON configuration for automated restorations, aligning with modern deployment tools.
- **Time-Saving and Error Reduction:** Reduces manual restoration time and decreases error likelihood.
- **Integration with Deployment Tools:** Complements third-party auto-deployment tools for more cohesive system management.
- **Enhanced Restoration Flexibility:** Allows detailed control over restoration specifics via command-line parameters.
- **Comprehensive Logging:** Produces detailed logs post-restoration for audit and verification.

Restore Command Syntax Example:

DistributedApplicationManager.exe /R /F "C:\Demo1\FTView.json" /e 123456

- /R Required. Restore an archive
- /F Required. Specifies the restore configuration JSON file location
- /E Optional. Specifies a password for the archive file

JSON:

```
1 {
2   "RestoreType":1, // Scope: 0,1,2,3
3   "ArchivePath":"C:/Demo1/FTViewDemo.apb", // Archive path -- Can not use \ , use / instead.
4   "AppType":"Distributed", // Local, Station, Distributed
5   "NewAppName":"FTViewApp", // Name for the new application
6   "Overwrite":"Y", // Y/N, local application apa achive file didn't support overwrite.
7   "Selections":[ // Restore Selections
8     {
9       "Area":"Line1_HMI", // Area
10      "ServerName":"FTViewDemo_HMI", // Server Name
11      "ServerType":"HMI", // Server Type: HMI/FTLinux/FTAE/OPCUA/OPCDA
12      "PriHost":"CARMEN-WIN11", // Primary Host --- if omitted, default is "localhost"
13      "SecHost":"Unavailable" // Secondary Host --- if omitted, default is "Unavailable"
14    },
15    {
16      "Area":"Line1 Alarms", // Area
17      "ServerName":"Line1_TagFTAE", // Server Name
18      "ServerType":"FTAE", // Server Type
19      "PriHost":"CARMEN-WIN11", // Primary Host --- if omitted, default is "localhost"
20    },
21    {
22      "Area":"Line1_Data", // Area
23      "ServerName":"FactoryTalk Linx", // Server Name
24      "ServerType":"FTLinux", // Server Type
25      "PriHost":"CARMEN-WIN11", // Primary Host --- if omitted, default is "localhost"
26      "SecHost":"Unavailable" // Secondary Host --- if omitted, default is "Unavailable"
27    }
28  ]
29 }
```

FactoryTalk® Alarms and Events Email Notification

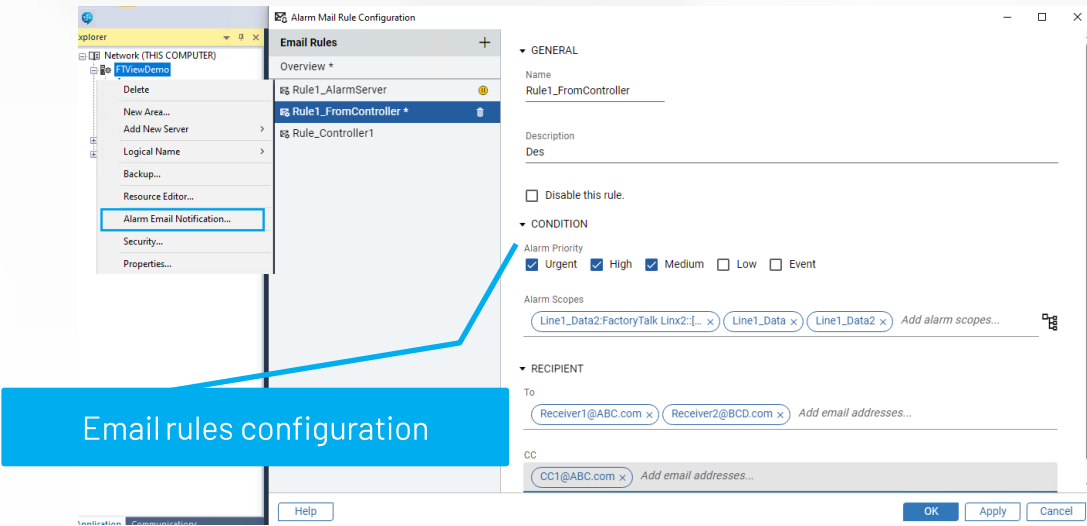
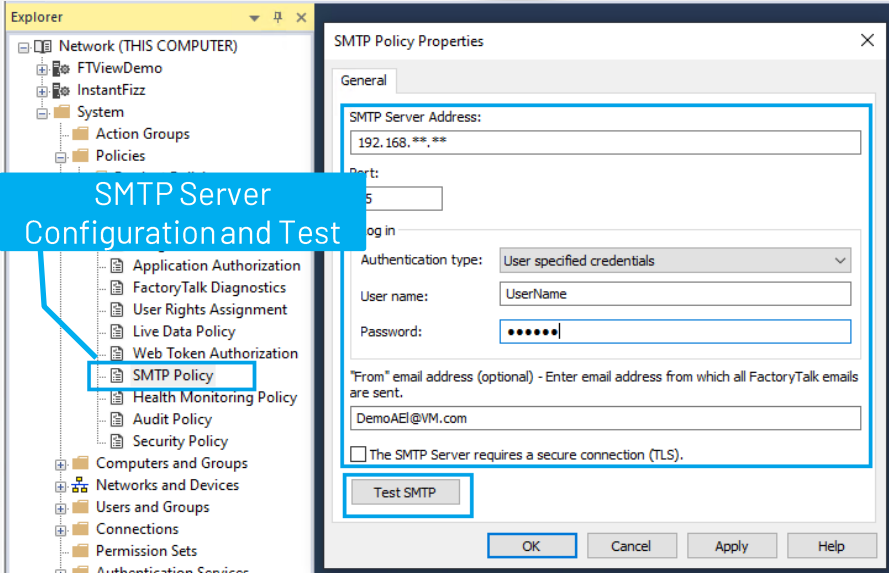
FactoryTalk® Alarms and Events v.6.50

Feature:

FactoryTalk® Alarms and Events v6.50 now supports standard email notifications when scoped alarms or events are activated. Users can define alarm scopes based on priority within selected groups, with rules customizable per group.

Benefits:

- **Streamlined Notifications:** Provides a straightforward method for receiving alerts via email, enhancing promptness in critical situations. This standard functionality keeps users informed, similar to third-party applications.
- **Continuity in Service:** Serves as a fundamental notification tool, helping to maintain essential alerting functions without interruption.



Default settings for TrendPro or XY Plot

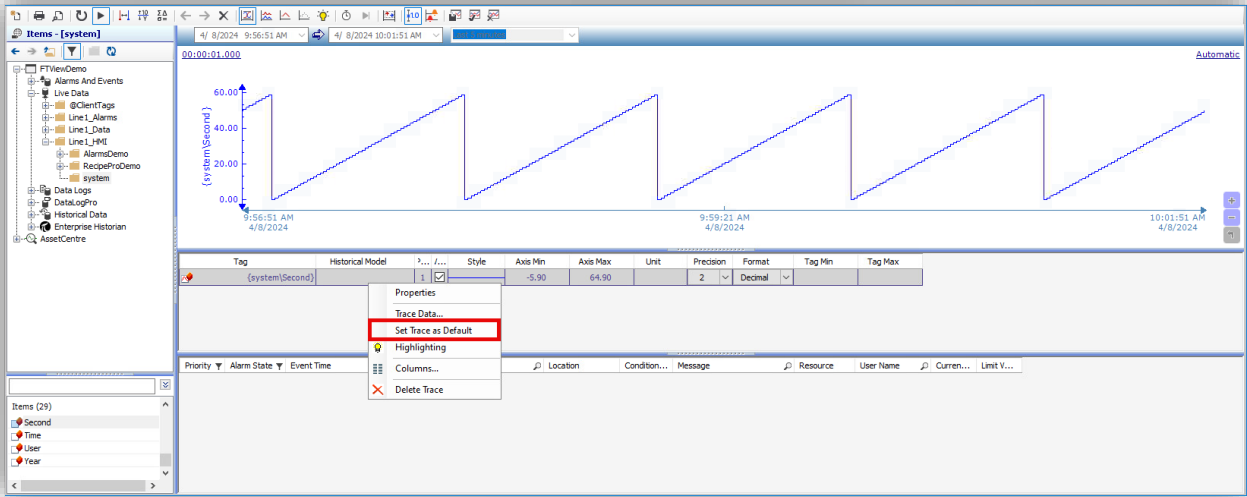
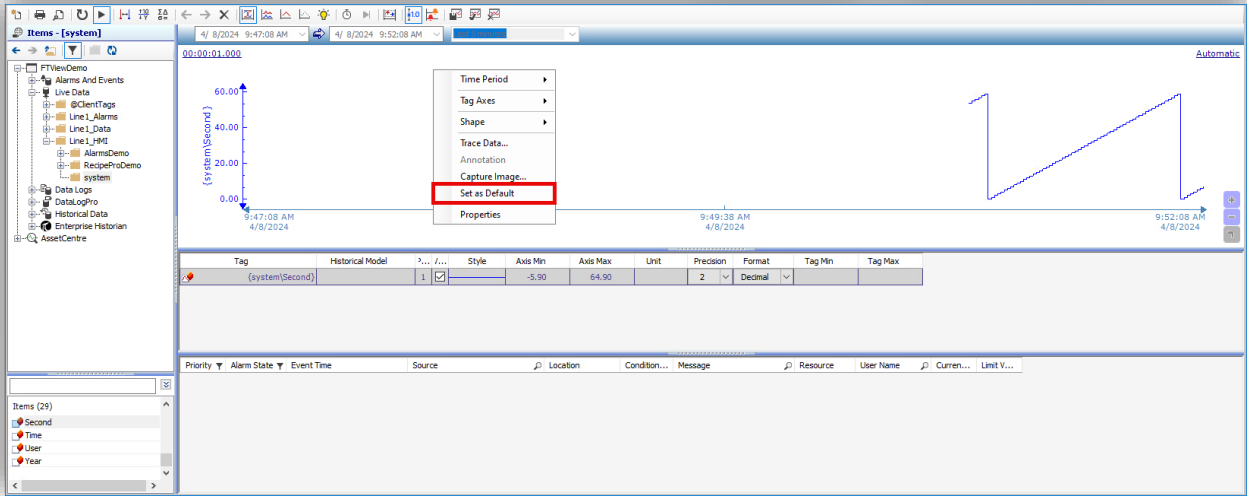
FactoryTalk® View Site Edition v.15.00

Feature:

Enable effortless setup and preservation of configurations for TrendPro and XYPlot, allowing settings to be saved as defaults on your computer.

Benefits:

- **Streamlined Configuration:** Simplify property adjustments for both tools, eliminating repetitive setups.
- **Project Consistency:** Maintain uniform visualization settings across various projects for better trend readability.
- **Time & Effort Efficiency:** Reduce the need for manual settings adjustments, saving valuable time.
- **Customized Experience:** Adapt visualization tools to fit specific analytical needs, enhancing data analysis effectiveness.



MOBILITY (VIEWPOINT)



Web Clients Support for New DataLogPro on ViewPoint

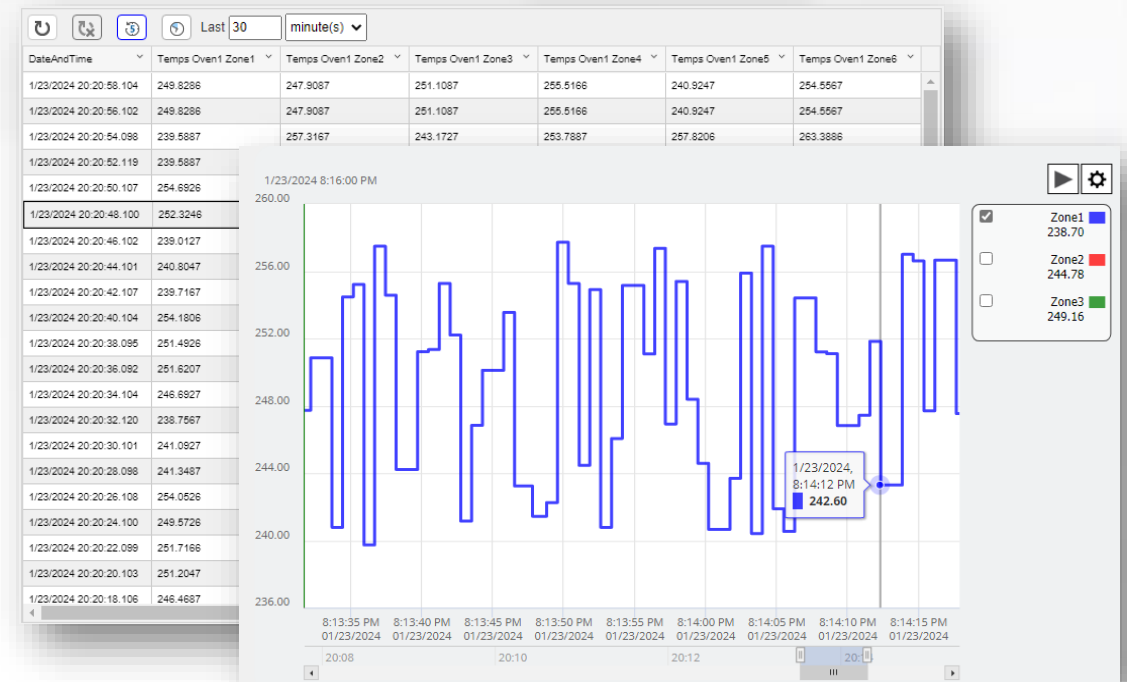
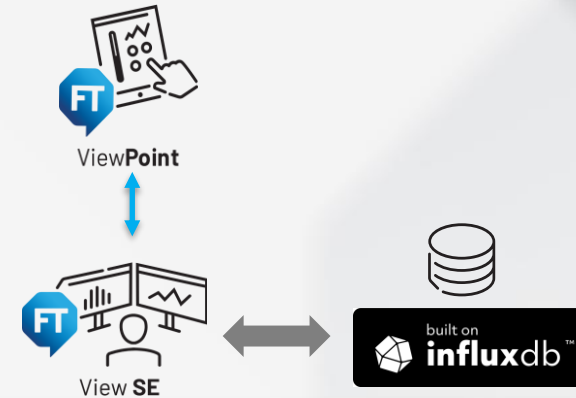
FactoryTalk® ViewPoint v.15.00 for Site Edition

Feature:

Expand access to DataLogPro from web clients and mobile devices, allowing mobile users to retrieve, visualize (DataGrid and TrendPro objects), and analyze data logged in InfluxDB™ from a web browser.

Benefits:

- **Enhanced Data Accessibility:** InfluxDB™ integration is now extended to mobile users, allowing for data access from anywhere.
- **Streamlined Data Interaction:** Users can easily retrieve, visualize, and analyze historical data directly from a web browser, enhancing the flexibility and efficiency of data management.
- **Improved Decision-Making:** Real-time access to historical data enables quicker, more informed decision-making in mobile and remote environments.
- **Cross-Platform Compatibility:** Delivers seamless data viewing and analysis across different devices, fostering better collaboration and productivity.



Web Clients Support for Apache EChart Widgets

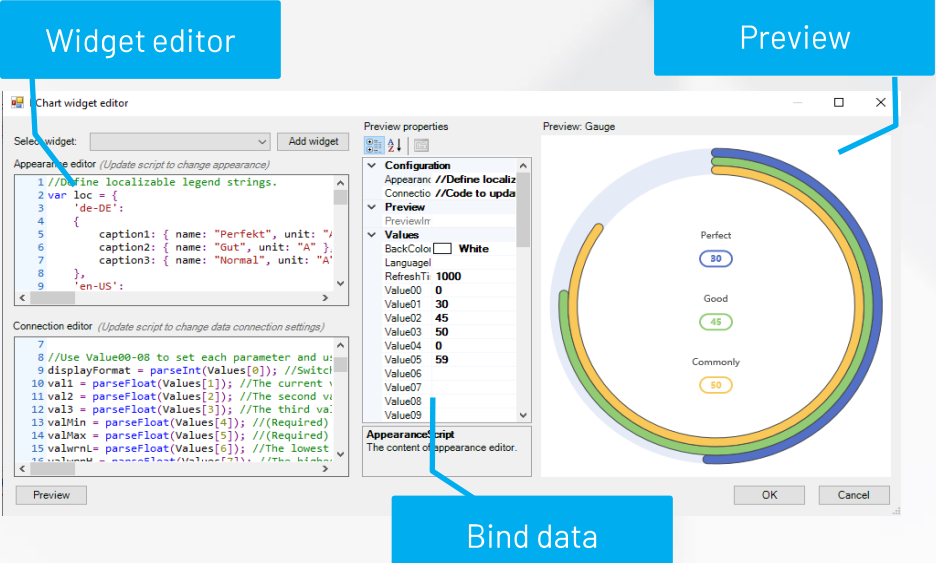
FactoryTalk® ViewPoint v.15.00 for Site Edition

Feature:

Expand EChartsWidget support to web clients to provide data access anytime and anywhere and improve real-time decision-making.

Benefits:

- **Enhanced Accessibility:** Users can access sophisticated EChart widgets on web clients, enabling data visualization from any device, anywhere, enhancing the flexibility of monitoring and analysis.
- **Streamlined Development:** Widgets can be configured as embedded objects within FactoryTalk® View SE, simplifying the development process and integration into existing systems.
- **Advanced Visualization:** Provides the tools to build digital dashboards with rich, web-based widgets that adhere to modern visualization standards, dramatically improving the user interface and experience.



Web Clients Support for Built-in Security Functions

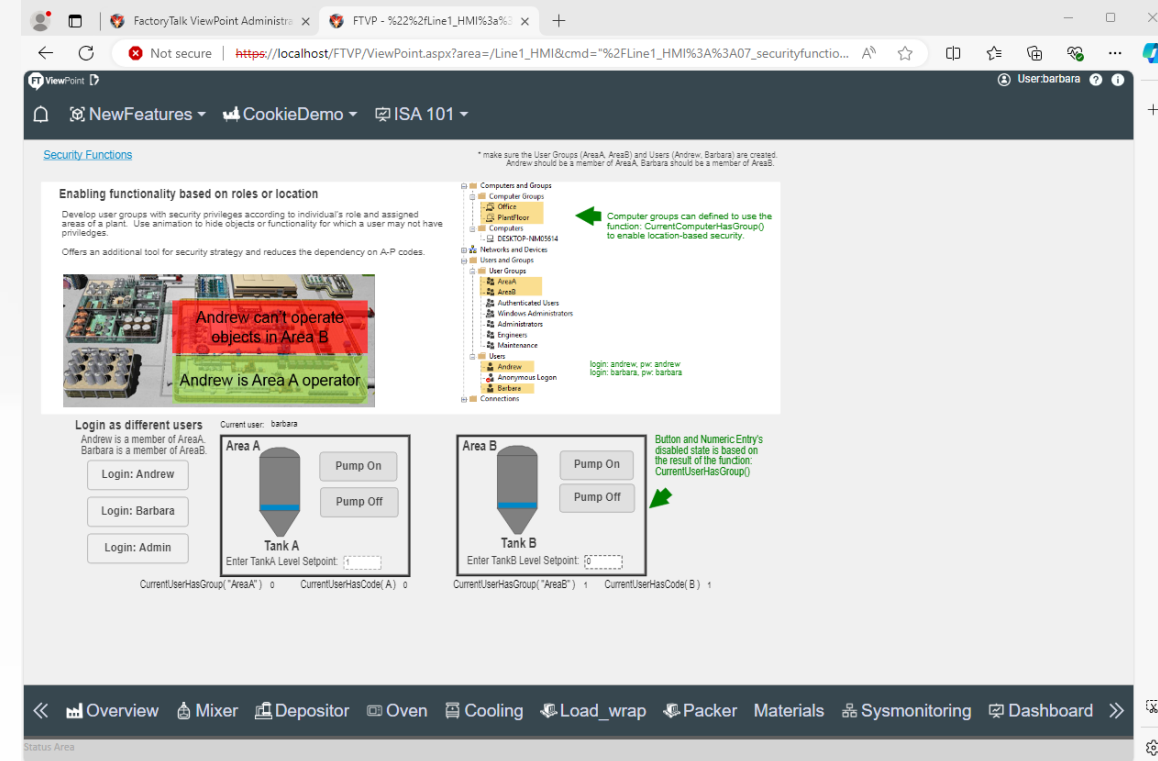
FactoryTalk® ViewPoint v.15.00 for Site Edition

Feature:

- Support Built-in Security Functions on ViewPoint Web Client:
 - CurrentUserHasGroup(UserGroupName):** Verifies if the logged-in user belongs to a specified group. Does not support Windows users on web client, returns a period ('.').
 - CurrentUserHasCode(SecurityCode):** Determines if the current user has a specific security code.
 - CurrentUserName():** Retrieves the name of the current user.
 - CurrentComputerHasGroup(GroupName):** Confirms if the computer where the ViewPoint server is running belongs to a specified group.

Benefits:

- Role-based Functionality:** Enables specific functionalities based on the user's role or location, confirming that only authorized users can access certain features or data.
- Unified Security Across Clients:** Provides a consistent security strategy across both thick clients and web clients, enhancing overall system integrity and reducing complexity in security management.



Web Clients Support for Built-in Alarm and Event Functions

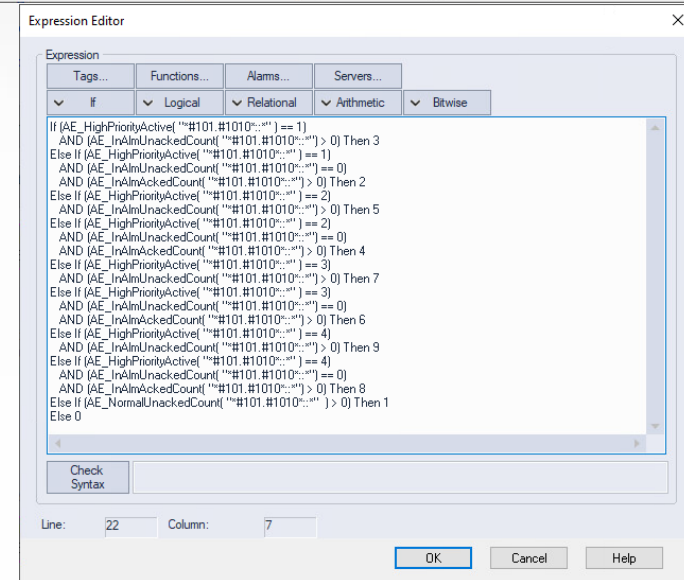
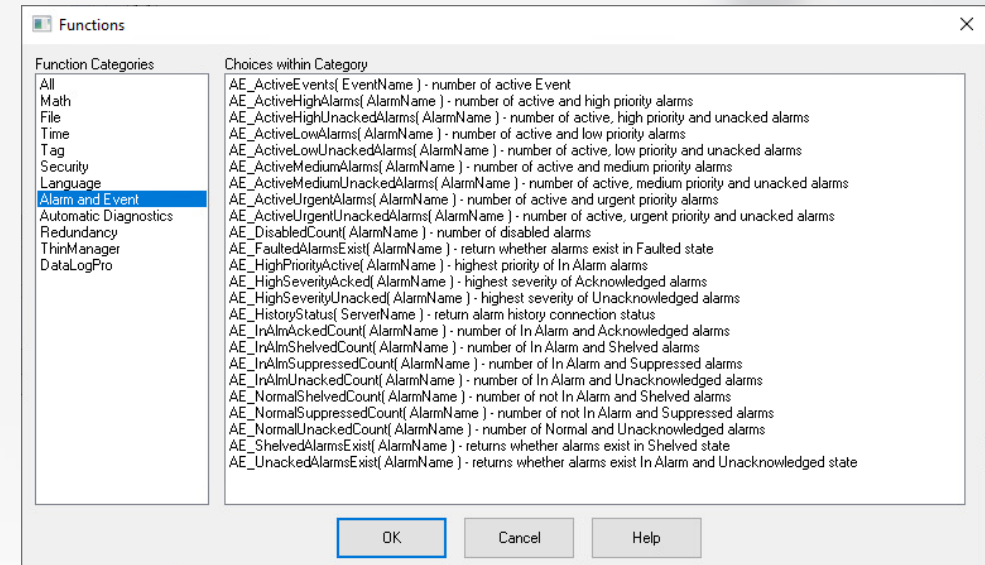
FactoryTalk® ViewPoint v.15.00 for Site Edition

Feature:

FactoryTalk® ViewPoint now matches FactoryTalk® View SE with full support for all 24 alarm functions. This extension includes support for alarm grouping, use of wildcard characters (? and *), and parameters within alarm functions, and the capability to handle long expressions in PlantPax® applications, extending sophisticated alarm management to the web-based interface.

Benefits:

- **Consistency Across Platforms:** FactoryTalk® ViewPoint now offers the same robust alarm functionalities as FactoryTalk® View SE, delivering seamless operation and management across different platforms.
- **Enhanced Customization and Flexibility:** Users can now tailor alarm settings more precisely with extended support for grouping, wildcards, and parameters, improving the responsiveness and adaptability of alarm systems.
- **Advanced Alarm Handling:** The ability to use long expressions in alarm functions enables detailed and complex conditions to be monitored, enhancing control and safety in PlantPax® applications.



Web Clients Support for Multiple Navigation Menus

FactoryTalk® ViewPoint v.15.00 for Site Edition

Feature:

Support multiple built-in navigation menus, allowing each web client to display distinct menus tailored to specific operational

Benefits:

- **Customized Interfaces:** Enables customization of web client interfaces with distinct navigation menus tailored to individual user needs.
- **Operational Efficiency:** Improves operational efficiency by allowing web clients to feature navigation designed for different roles and operational contexts.
- **User Satisfaction and Adaptability:** Increases adaptability and user satisfaction by providing web clients with more relevant and targeted navigation options.

License Simplification FactoryTalk® View v13



FactoryTalk® View SE license simplification

Licensing tiers for the FactoryTalk® View SE portfolio to simplify buying decisions by including everything needed for a visualization solution in one part number

Station Lite	Station	Small	Medium	Large
FactoryTalk® View SE Station <ul style="list-style-type: none">• 25 display count• Unlimited web clients	FactoryTalk® View SE Station <ul style="list-style-type: none">• Unlimited display count• Unlimited web clients	FactoryTalk® View SE Distributed <ul style="list-style-type: none">• HMI Server with Unlimited display count• 5 HMI Clients• Unlimited web clients	FactoryTalk® View SE Distributed <ul style="list-style-type: none">• HMI Server with Unlimited display count• 10 HMI Clients• Unlimited web clients	FactoryTalk® View SE Distributed <ul style="list-style-type: none">• HMI Server with Unlimited display count• 25 HMI Clients• Unlimited web clients

Two options for Station

- Station Lite – 25 displays with unlimited web clients
- Station – unlimited displays with unlimited web clients

With add-on option:

- FactoryTalk® View Studio Enterprise

Three options for Distributed

All options have unlimited displays and unlimited web clients, plus:

- Small – 5 full HMI Clients
- Medium – 10 full HMI Clients
- Large – 25 full HMI Clients

With add-on options:

- Additional HMI client, full or read-only
- FactoryTalk® View Studio Enterprise
- Redundant HMI Server

**Operating System and
Microsoft SQL server
support for
FactoryTalk® View
v.15.00**





FactoryTalk

by **ROCKWELL AUTOMATION**



OS support

- Windows Server 2022 (64 bit)
- Windows Server 2019 (64 bit)
- Windows 11 (64 bit)
- Windows 10 (64 bit)

Microsoft SQL server support

(for datalog & FactoryTalk® A&E)

- MSSQL 2022 (64 bit)
- MSSQL 2019 (64 bit)
- MSSQL 2017 (64 bit)
- MSSQL 2016 SP2 (64 bit)
- MSSQL 2014 SP3 (64 bit)
- MSSQL 2012 SP4 (64 bit)

No longer supported

- Windows Vista (8.00)
- Windows Server 2003 (8.00)
- Windows Server 2008 R2 (11.00)
- Windows Server 2012 (10.00)
- Windows 7 (12.00)
- Windows 8 & 8.10 (11.00)
- Windows 10 32 bit (12.00)

Latest operating system info can be found at the [Rockwell Automation Compatibility and Download Center](#)

Watch, Learn and Apply



Demo application: FactoryTalk® View SE distributed

The demo application included with FactoryTalk® View Studio Enterprise has been updated to include new v15.00 features

Walks a user through new features delivered in releases from v9.00 to v15.00

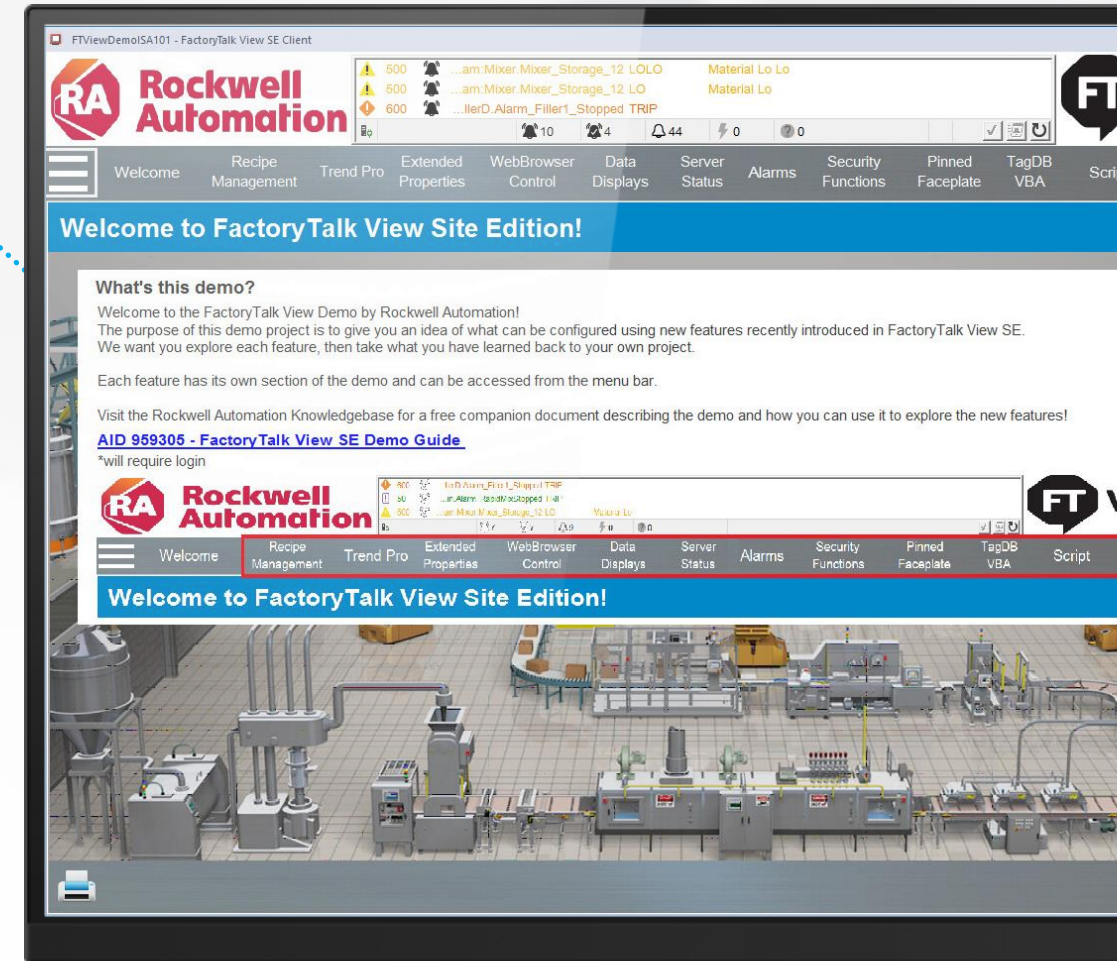
Automatically installed with FactoryTalk® View SE v15.00

Setup instructions included in .PDF found in HMI Projects folder

- How to link the demo to a controller
- Location of the.CLI file
- How to configure FactoryTalk® ViewPoint

.ACD file is also included in the HMI Project folder

Demo configured guide also found in [Knowledgebase](#)



YouTube video playlists

Rockwell Automation provides “how to” videos for various features in:

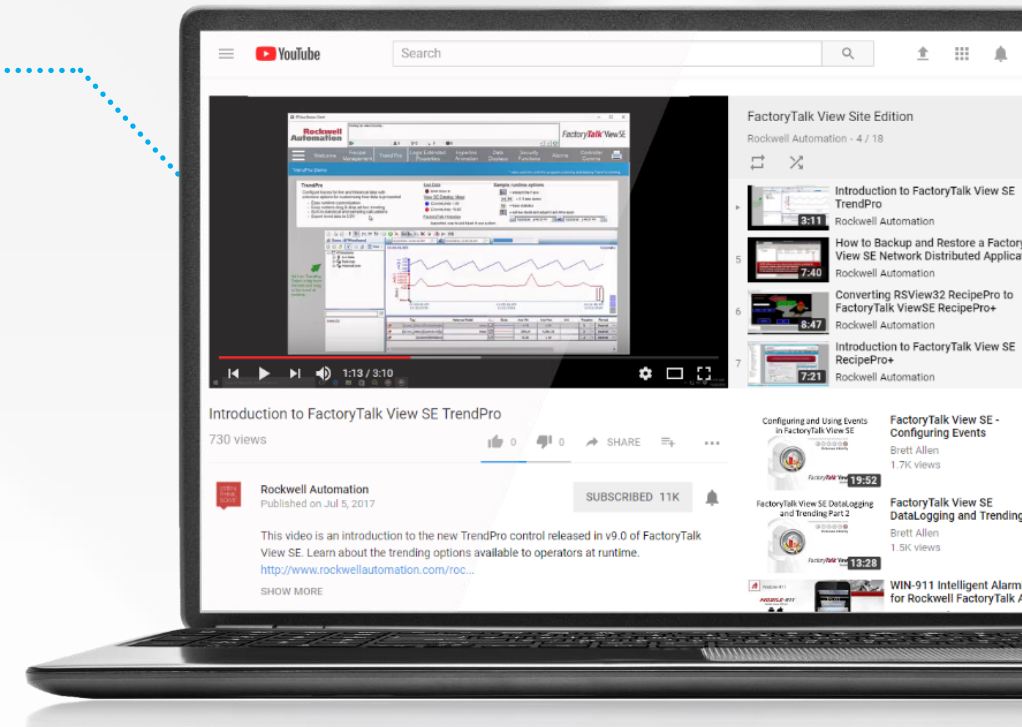
- FactoryTalk® View SE
- FactoryTalk® View ME with PanelView™ Plus 7
- View Designer with PanelView™ 5000
- And many other Rockwell Automation products

Videos created by Commercial Engineering to demonstrate product features and how they are configured

New content added monthly

YouTube playlist links:

- [FactoryTalk® View Site Edition](#)
- [PanelView™ Plus 7 and FactoryTalk® View Machine Edition](#)
- [FactoryTalk® AssetCentre](#)
- [PanelView™ 5000 and Studio 5000 View Designer®](#)



THANK YOU



by ROCKWELL AUTOMATION

expanding **human possibility**®



www.rockwellautomation.com



PUBLIC

AND MORE...



PUBLIC

ME Recipe ActiveX Control Enhancement

FactoryTalk® View Machine Edition v.15.00

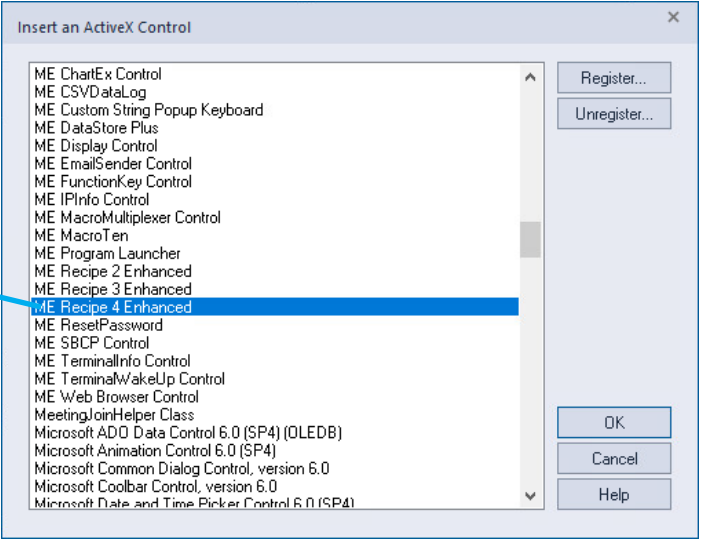
Feature:

Introducing an enhanced Recipe ActiveX Control, ME Recipe 4, which now supports up to 1000 floating tags. This enhancement expands the control's capabilities, allowing for more complex and detailed recipe management directly within the HMI environment.

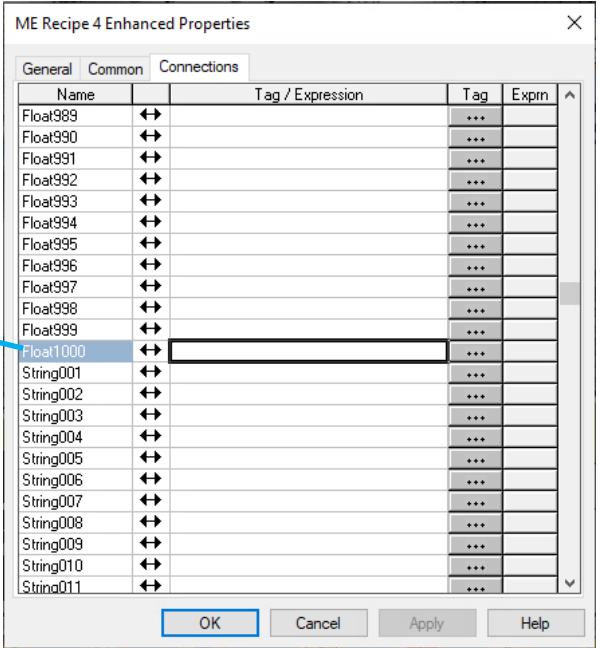
Benefits:

- **Expanded Capability:** Increases the number of floating tags supported from previous limits, enabling more complex recipes and broader application use.
- **Enhanced Usability:** Simplifies the user experience by providing a more robust and flexible interface for managing large sets of recipe data.
- **Increased Flexibility:** Offers greater flexibility in recipe management and deployment, accommodating a wider range of industrial processes.

ME Recipe 4 Enhanced



1000 floating tags



PUBLIC

Enhanced

Sorted value differences in RecipePro+ editor

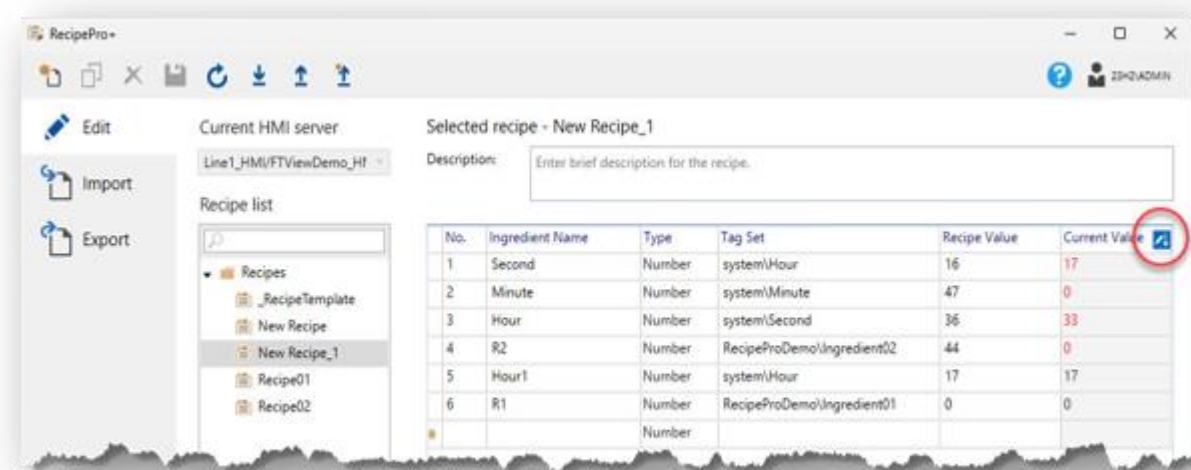
FactoryTalk® View Site Edition and FactoryTalk® View Machine Edition v.15.00

Feature:

The updated RecipePro+ editor now includes advanced sorting capabilities, allowing users to identify discrepancies between current tag values and preset recipe values.

Benefits:

- **Clearer Data Comparison:** Enhanced visibility in RecipePro+ with advanced sorting options delivers that discrepancies are immediately noticeable, facilitating faster decision-making and accurate adjustments. This leads to a more organized and efficient operational environment.



PUBLIC

Enhanced

FactoryTalk® ViewPoint Trend Enhancement

FactoryTalk® ViewPoint v.15.00 for Site Edition and Machine Edition

Feature:

This feature introduces enhancements to Trend and TrendPro (Site Edition only) functionalities. This update introduces the capability to support trends of any size, along with flexible display options, such as showing or hiding the X-axis and Y-axis configurations. These enhancements are designed to improve visualization and user interaction with trend data in real-time monitoring.

Benefits:

- **Enhanced Scalability:** Trends can now be configured to any size, accommodating more data points and providing better visibility into processes over time.
- **Customizable Displays:** Users can choose to show or hide the X-axis and Y-axis, allowing for a more tailored view that fits specific monitoring needs or preferences.
- **Improved User Experience:** Enhanced trend visualization capabilities make it easier to analyze data, leading to quicker decision-making and more efficient process adjustments.
- **Greater Flexibility:** The new features provide more control over trend displays, enhancing the functionality and adaptability of the HMI for various industrial applications.

