



FT Linux CommDTM

Communications service for asset management

expanding **human possibility**[®]



PUBLIC



FT Linx Software Portfolio

Communications Services

 **MaintenanceSuite**

 **DesignSuite**

 **OperationSuite**

 **Linx Gateway**

*Data access (OPC DA/UA; Excel) and system management services

 **Linx Data Bridge**

*Moves data between FactoryTalk® sources

 **Linx CommDTM**

Communications service for asset management of EtherNet/IP process devices

 **Action Manager™**

Automate system management tasks (wall clock updates)

 **Linx**

Premier connectivity to Allen-Bradley® control hardware

 **Service Platform**

 **OPC-DA Interface**

Connectivity to third-party OPC-DA Servers

 **Linx OPC UA Connector**

Connectivity to third-party OPC UA hardware and software servers

EtherNet/IP Address Commissioning Tool
Assign device IP addresses
using BOOTP / DHCP

 **KEPServer Enterprise**

*Connectivity to third-party automation hardware and network protocols

* Purchased separately

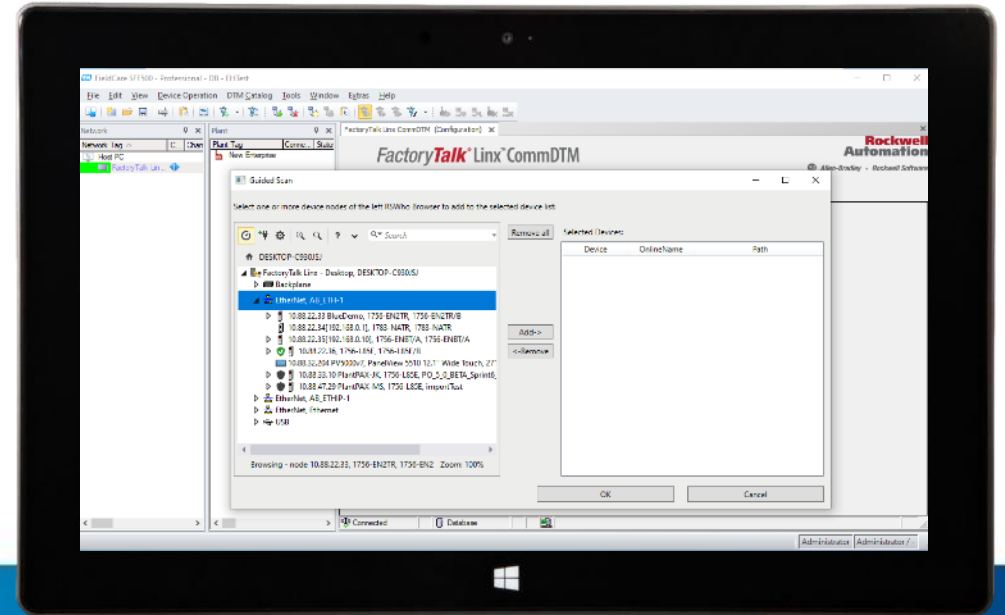


PUBLIC

FT Linx CommDTM



Third-party FDT
Asset Management
Software



Capability

Instrument browsing and communications service for asset management of EtherNet/IP process devices

Based on Field Device Type (FDT) standard

Works with Endress+Hauser FieldCare and other FDT containers

Software Acquisition

Currently no purchase / license required for Comm DTM

Obtain from Rockwell Automation software download portal


Connectivity

Choice of FactoryTalk® Linx or RSLinx® Classic for CIP Communications

Use to interface with process instrumentation connected via EtherNet/IP or HART modules in an Allen-Bradley® chassis (Module DTMs required)

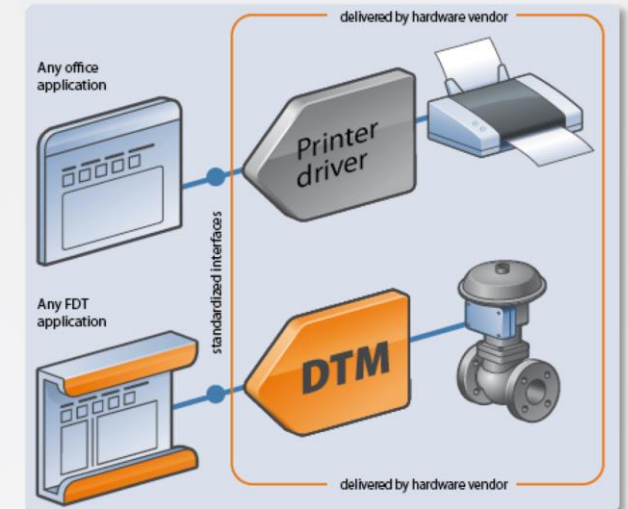
FDT/DTM Technology

Introduction

- **FDT[®]**  Technology holds the key to integrating any device, system or network in today's complex industrial automation architecture. It consists of two major software components:
 - **FRAME[™] Application (FDT/FRAME[™])**

An FDT/FRAME, whether it's a device configuration tool, system engineering tool, operator console, or asset management tool provides access to all devices, gateway and communication components with single-point access to operational assets. With the aid of this component, the information of processes in the field is accessible in real-time and available across the lifecycle of a plant or application.
 - **Device Type Manager[™] (FDT/DTM[™])**

A Device DTM (Device Type Manager) is similar to a device driver (like the driver used to set up a new printer) which is created by the device supplier who has the most knowledge of the full capability of the device. The DTM includes a rich and user-friendly graphical interface to make device configuration, maintenance, diagnostics and troubleshooting fast and easy.
- Together, an FDT/FRAME and a DTM or a collection of DTMs create an FDT-enabled application, which can be scaled from a single device to tens of thousands of devices controlled by a single FRAME throughout the automation communication pyramid.



FT Linx CommDTM for EtherNet/IP and HART Module DTMs

Access path for Process Device Configuration and Asset Health Monitoring

- **FactoryTalk® Linx CommDTM V1.04.00**

- Requires **FactoryTalk® Linx ≥ V6.20.00**

- **HART Module DTMs**

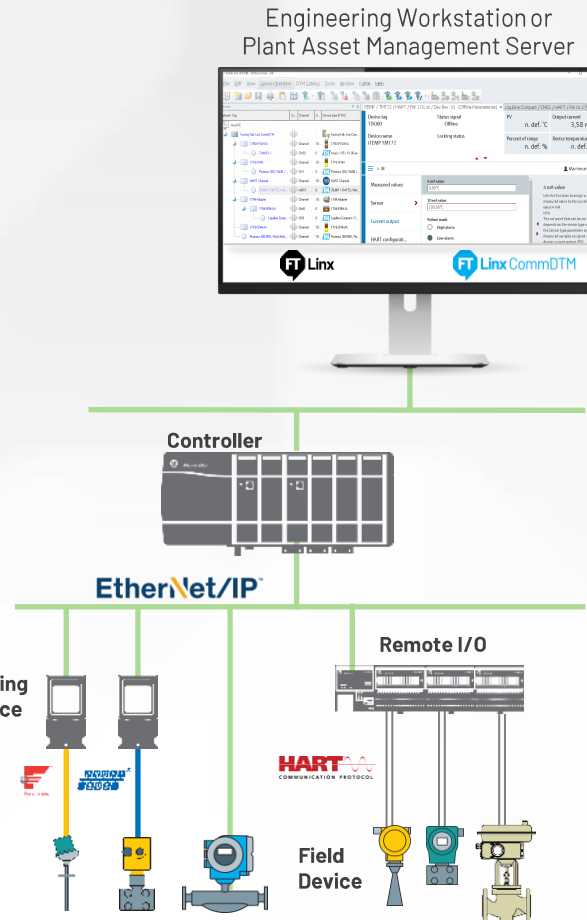
- Rockwell Automation HART Channel V1.0.5 (FLEX 5000)
- Rockwell Automation HART 1756 Family DTM V1.0.2
- Rockwell Automation HART 1718 Family DTM V1.0.2
- Rockwell Automation HART 1719 Family DTM V1.0.2
- Rockwell Automation HART 1794 Family DTM V1.0.5
- Rockwell Automation HART AADvance® Family DTM V1.0.2
- Rockwell Automation HART 1715 I/O Family DTM V1.0.1
- Spectrum Controls HART [1734](#) Family DTM V1.0.4

Planned Q4/CY23:

- Rockwell Automation HART 1769 I/O System DTM V1.0.2
- Spectrum Controls HART 1769sc-xF4IH DTM V1.0.2
- Rockwell Automation HART 5015 Family

- **Gateway DTMs for 1788 Linking devices (FF and PA)**

(not supported by SAH70)



Endress+Hauser

FieldCare SFE500 / SAH70

- FDT Frame Application for Process Device Configuration and Asset Health Monitoring

Rockwell Automation

FactoryTalk® Linx CommDTM for EtherNet/IP

- Enables the FDT framework application to communicate over the EtherNet/IP network
- Uses FactoryTalk® Linx for CIP communication

Rockwell Automation

HART Module DTMs

- Handles the transmission of HART over EIP, depending on the remote I/O type

Process Device DTMs

- Device Type Manager for Endress+Hauser and third-party devices

Find more information within the FactoryTalk® Linx CommDTM [Getting Results Guide](#)

FactoryTalk Linx™ CommDTM and I/O Module DTMs

FDT FRAME Application
(Endress+Hauser FieldCare SFE500)



FieldCare 2.14

CommDTM
(FactoryTalk Linx CommDTM for HART and EtherNet/IP)



V1.4.0

GatewayDTM
(Rockwell Automation infrastructure DTMs)

EtherNet/IP™

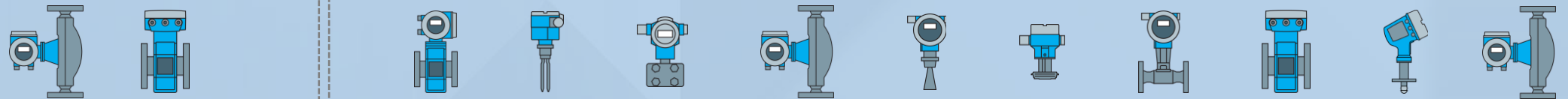
NEW

| 1734-AENTx 1769-L1x | 1756-ENxTx | 1719-AENTR | 1718-AENTR | 5094-AENTR | 1794-AENTx | AADvance | 1769-AENTR 1769-LxxERx |
|---|---|--|--|--|--|--|---|
| SPECTRUM CONTROLS 1734SC-IE2CH SPECTRUM CONTROLS 1734SC-IE4CH SPECTRUM CONTROLS 1734SC-OE2CH | 1756-IF8H 1756-IF8IH 1756-IF16H 1756-IF16IH 1756-OF8H 1756-OF8IH | 1719-IF4HB 1719-CF4H | 1718-IF4HB 1718-CF4H | 5094-IF8IH 5094-OF8IH 5094-IF8IHXT 5094-OF8IHXT | 1794-IE8H 1794-IF8IH 1794-OE8H 1794-OF8IH 1794-IF8IHFX | T9431 T9432 T9481 T9482 | SPECTRUM CONTROLS 1769SC-IF4IH SPECTRUM CONTROLS 1769SC-OF4IH |
| Spectrum Controls 1734 Family DTM V1.0.4 | Rockwell Automation 1756 Family DTM V1.0.2 | Rockwell Automation 1719 Family DTM V1.0.2 | Rockwell Automation 1718 Family DTM V1.0.2 | Rockwell Automation HART Channel V1.0.2 | Rockwell Automation 1794 Family DTM V1.0.5 | Rockwell Automation AADvance Family DTM V1.0.2 | Rockwell Automation 1769 I/O System DTM V1.0.1 Spectrum Controls 1769sc-xF4IH DTM V1.0.1 |

EtherNet/IP™



Device DTM
(Endress+Hauser, ...3rd Party)



FDT Frame Topology

FieldCare SFE500 - Professional - DB

File Edit View **Device Operation** DTM_Catalog Tools Window Extras Help

Network

| Network Tag | Co... | Channel | A... | Device type (DTM) |
|---------------------------------|-------|---------|-------|--------------------------|
| Host PC | | | | |
| FactoryTalk Linx CommDTM | | | | FactoryTalk Linx Com... |
| 1756-IF16H/A | | Channel | 19... | 1756-IF16H/A |
| T-MASS / | | CH00 | 0 | t-mass / 65 / V1.00.xx |
| 1718-CF4H | | Channel | 19... | 1718-CF4H |
| Promass 200 / 8x2B / ... | | CH1 | 0 | Promass 200 / 8x2B / ... |
| HART Channel | | Channel | 19... | HART Channel |
| iTEMP / TMT72 / HA... | | HART | 0 | iTEMP / TMT72 / HA... |
| 1794 Adapter | | Channel | 19... | 1794 Adapter |
| 1794-IF8H/A | | Slot0 | 0 | 1794-IF8H/A |
| Liquiline Comp... | | CH0 | 0 | Liquiline Compact / C... |
| 1719-CF4H/A | | Channel | 19... | 1719-CF4H/A |
| Promass 300 500 / 8x3x 8x5x ... | | Channel | 19... | Promass 300 500 / 8x... |

iTEMP / TMT72 / HART / FW 1.01.zz / Dev.Rev. 01 (Offline Parameterize) x

Liquiline Compact / CM82 / HART / FW 01.C x

| | | | |
|----------------------------|--------------------------|-------------------------------|----------------------------------|
| Device tag TI5000 | Status signal Offline | PV n. def. °C | Output current 3,58 mA |
| Device name iTEMP TMT72 | Locking status | Percent of range n. def. % | Device temperature n. def. °C |

Maintenance

Measured values

4 mA value
0,00 °C

Sensor

20 mA value
100,00 °C

Current output

Failure mode

High alarm

Low alarm

Current trimming 4 mA
4,000 mA

Current trimming 20 mA
20,000 mA

4 mA value

Use this function to assign a measured value to the current value 4 mA.

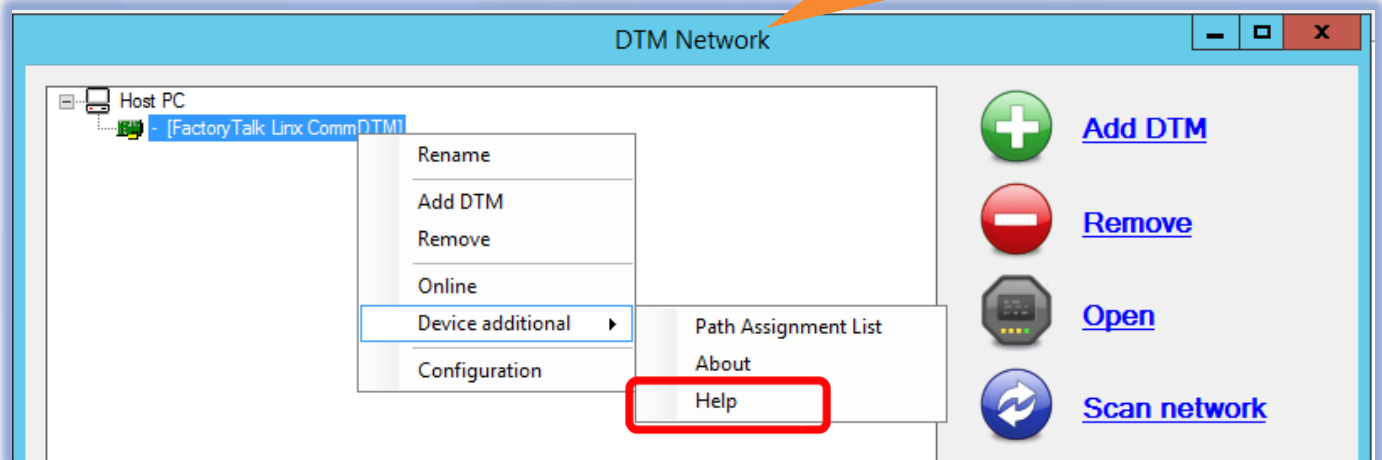
Info:

The set point that can be set depends on the sensor type used in the Sensor type parameter and the measured variable assigned in the Assign current output (PV) parameter.

Min/Max: -50000 / 50000

Administrator Administrator / -

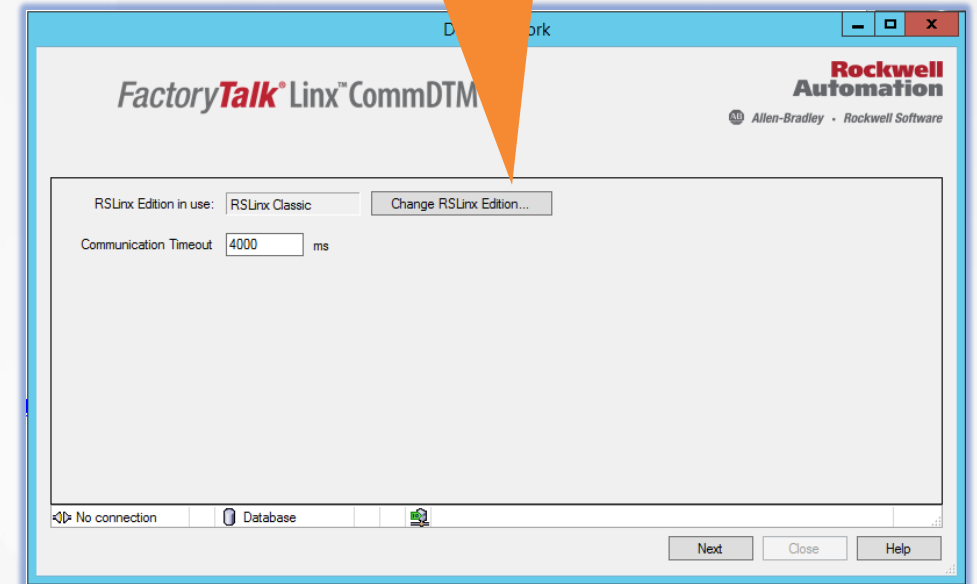
- Adding devices can be done:
 - Online by scanning the network (preferred)
 - Offline by adding devices manually
- For more information, refer to the FactoryTalk® Linx CommDTM help



Enables asset management software to share communications services used by other FactoryTalk® software and Studio 5000®

- Communications software
 - RSLinx® Classic ≥ V3.90.00
 - FactoryTalk® Linx ≥ V6.00.00
- Field Device Tool frames
 - FactoryTalk® AssetCentre V7.10.00 or higher
 - Endress + Hauser FieldCare
 - Other 3rd Party FDT containers

Easily change
RSLinx® Edition



Thank You



www.rockwellautomation.com



expanding human possibility[®]